

Order: Rhabditida

Trichuris trichiura (Whip worm)

Sit of infection: large intestine

Host: human , Equine, Ruminants, dogs

causes a disease called trichuriasis

Morphology:

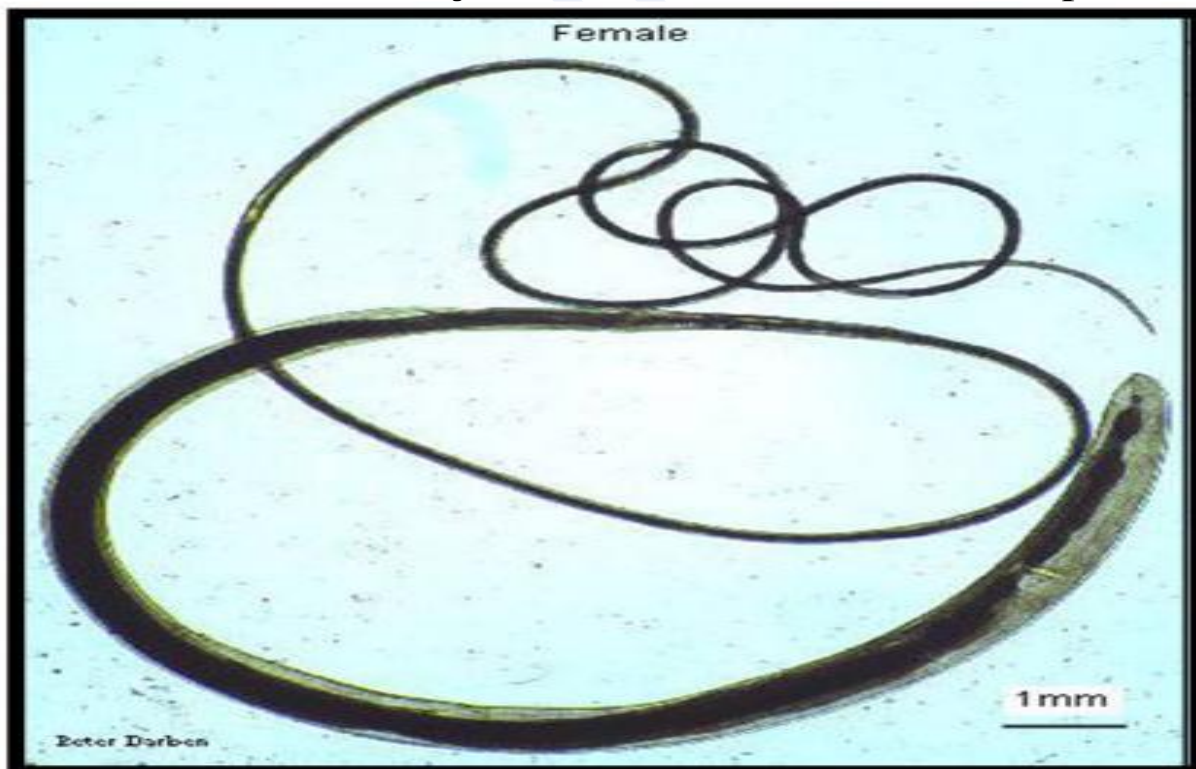
Female

1- 35-50 mm in length.

2- It consists of thin anterior three fifths and a thick posterior two fifths of the worm looks like a whip.

3- Cellular esophagus occupying all the thin anterior part while the intestine & the single set of reproductive organs occur in the posterior thick part.

4- Vulva situated at the junction of the thin & the thick parts.



Male

1- It measures 30- 45 mm in length.

2- It consists of anterior thin part & posterior thick part .



3- Single spicules inside a retractile spine, covered sheath.

Egg :

1- 50-55 μm by 25 μm , barrel-shaped laid in one –cell stage embryo . It has a thin transparent inner membrane & a golden- brown outer shell.

2-Their characteristic eggs are barrel-shaped(lemon shape) , have two polar plugs .



Trichinella spiralis

Definitive host: Dog, cats, pigs, rodents, rabbits, birds.

Site of infection: small intestine

Intermediate host: Dog, cats, pigs, rodents, rabbits, birds.

Site of infection: musculature

Female:

1- 3-4 mm in length.

2- Cellular esophagus.

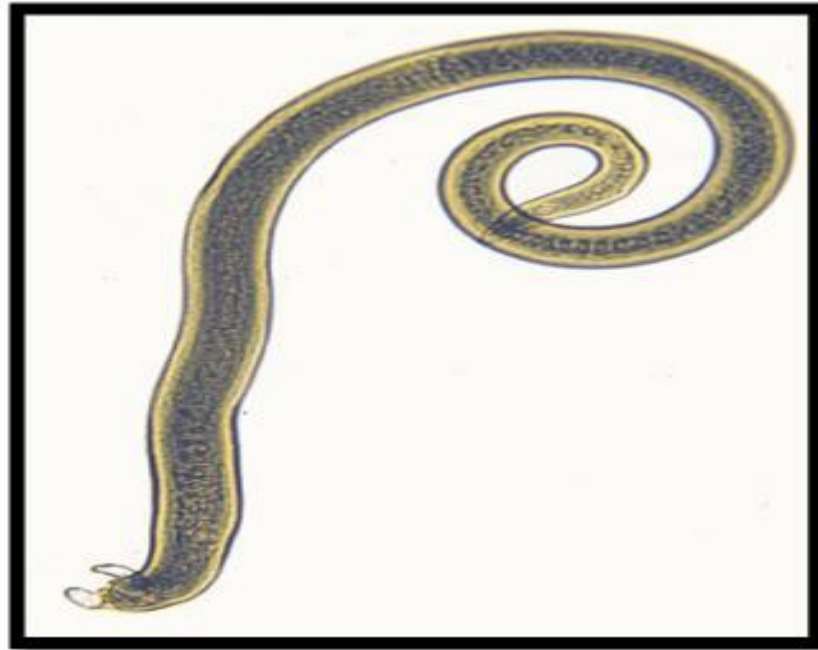
3- One set of genitalia only; the ovary situated at the posterior end, uterus proceeds to open in vulva at junction of anterior 5th with the rest of the body.

4- At the posterior end, the uterus contains eggs gradually mature and then hatch before they emerge from the vulva (viviparous).



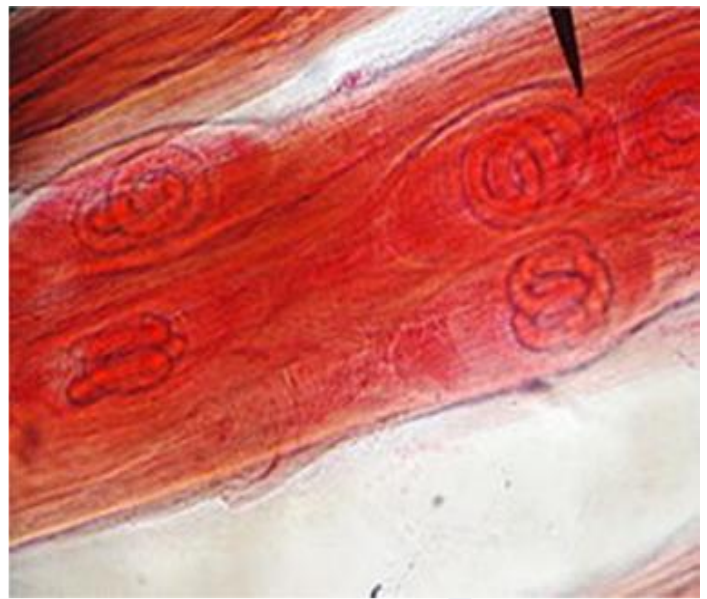
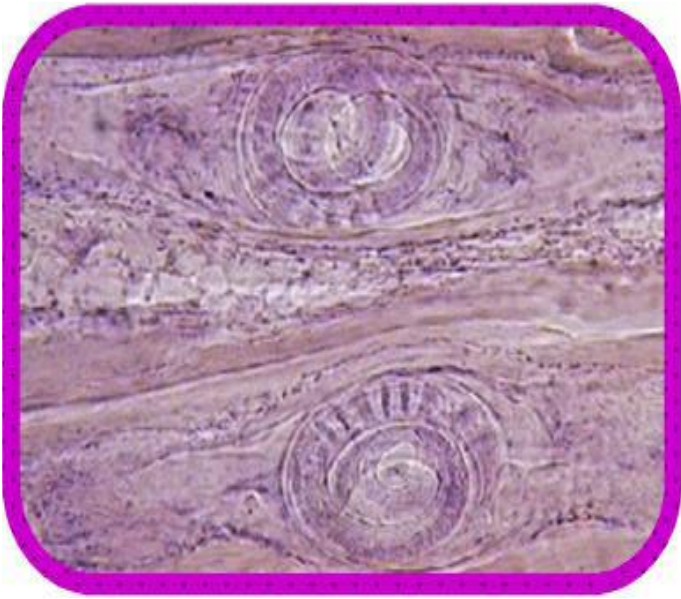
Male:

- 1- Measures 1.5 mm in length .
- 2- Cellular oesophagus.
- 3-The cloacal opening is terminal and is guarded by a pair of conical papillae.



Encysted larvae:

- 1- Larvae tend to lie in the longitudinal axis of the muscle fibers.
- 2- Each larvae is encysted singly or in heavy infections 2 or 3 larvae may encyst together.
- 3- Larvae takes a spiral or figure 8 appearance.
- 4- Cyst wall of fibrous tissue made up by reaction of the host.



Trichinella spiralis

