

# **CESTODA**

## **Practical parasitology**

**Prof. Dr. Muna M. Jori**

## *Moniezia expansa*

**Intermediate host:** Coprophagous Arthropods.

**Site of infection :** small intestine.

**Diagnostic Technique:** Fecal Flotation.

### **Morphology:**

**Egg:** containing Hexacanth Embryo length 80-90um  
, width 80-90-um, Sub-Cuboidal in shape proglottid.

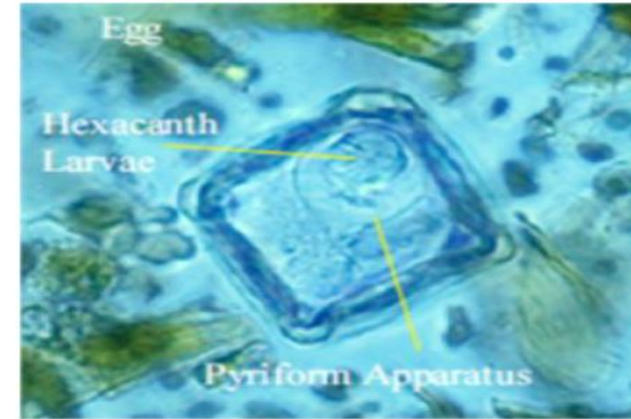
**larva stage:** Cysticercoid Cyst.

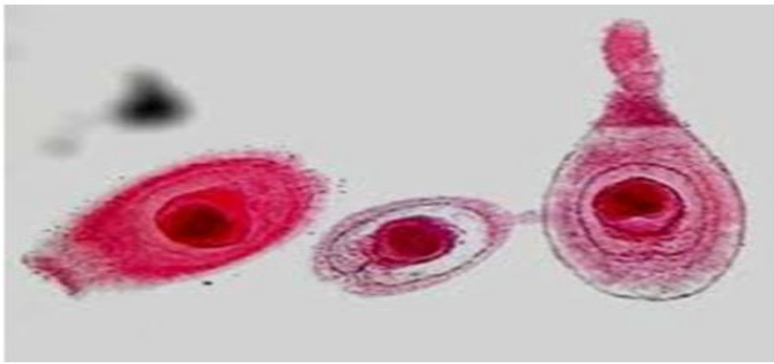
**Scolex:** un armed head with 4 suckers

**Mature segment:** duplicate of reproductive system observed crossly the two dark ring in the both said of mature segment microscopically representative the ovaries and vitellined glands will the testis distribution in the medial of segment body.

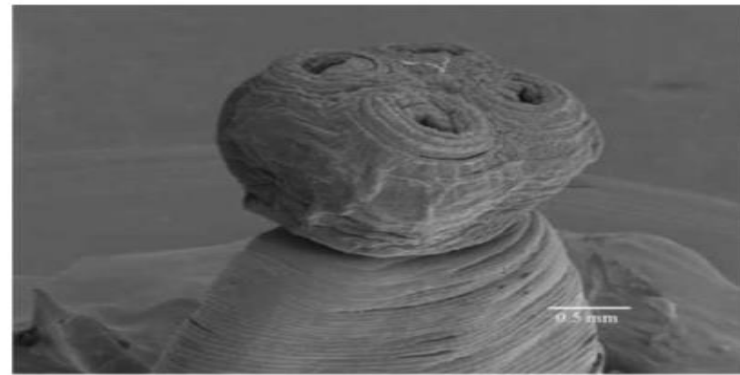
**gravid segment:** contain pre uterine apparatuses.

**Final hosts:** cattle

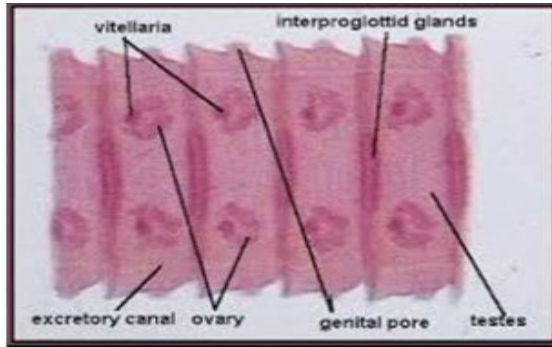




**Cysticeroid Cyst**



**Scolex with four suckers**



*Moniezia expansa*



*Moniezia expansa*

[www.iranhelminthparasites.com](http://www.iranhelminthparasites.com)

## **Segments**

### ***Raillietina sp.***

**Final Host:** chicken rather bird .

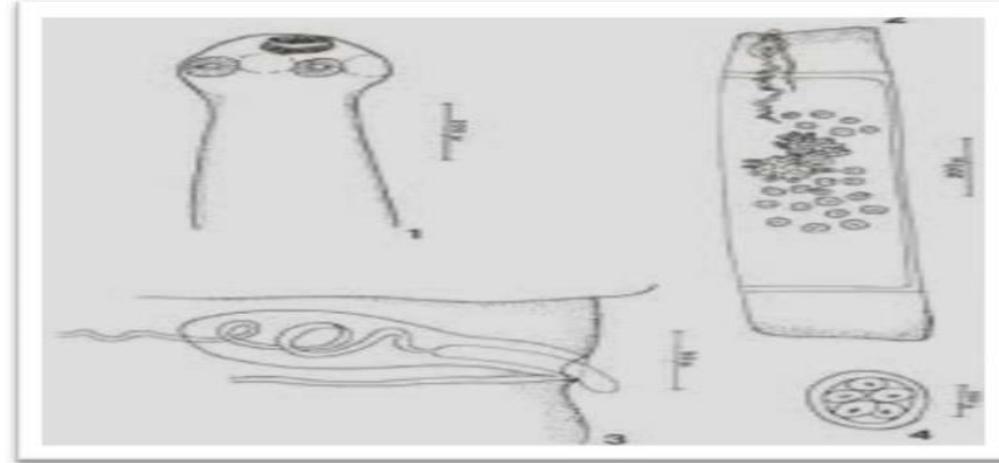
**Intermediate host:** of larvae stage ( cysticeroids ) is *musca domestica*

Mature and gravid segment

### **Characteristics: Morphological**

1- Testes numerous, cirrus pouch small.

- 2- Genital pores unilateral or irregular alternative
- 3- Ovary bilobed or not.
- 4- Vitelline gland compact
- 5- Egg 25  $\mu\text{m}$  – 50  $\mu\text{m}$  Shell thick, Hexacanth embryo present



*Raillietina spp*

*Raillietina sp*

**A- Scolex *Raillietina tetragona***

Characters :

- 1- have rostellum is armed with 90-100 hooks arrange in in double row .
- 2- Sucker are oval in shape armed with 8-12 row of minute hooks .

Prof. Dr. Muna M. Jori **B- Scolex of *Raillietina echinobothrida***

Character:

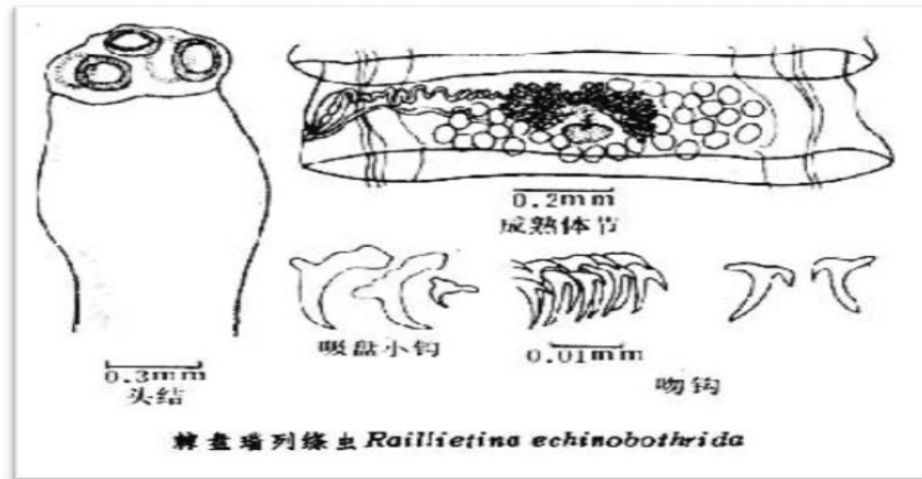


— Scolex bear ( 200 sucklets ) with four oval sucker containing 20-15 hooklets in different size.

### C- Scolex of *Raillietina cestisillus*

Characters :

- 1- Rostellum flattened and bears double row of 300-500 hammer –shaped hooks .
- 2- There are four unarmed weak Sucker .



*R.echinobotherid*

Scolex of *Raillietina cestisillus*

### *Diphylobothrium latum*

**Final host :** Dog, human ,pig ,fox ,polar bear ,fish eaters.

**Intermedai host:** Fish.

**Site of infection** : small intestine.

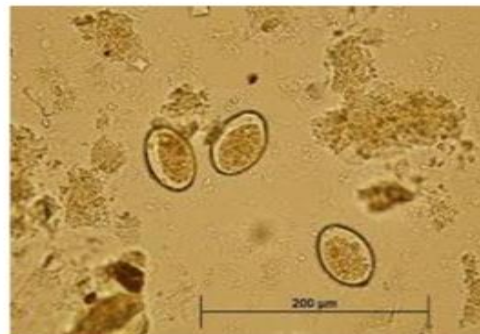
**Diagnostic Technique:** Fecal Flotation.

Length ranges of *Diphyllobothrium latum* 2-10 m., containing blackout marker centrally to mature segment.(location of uterus filled with egg).



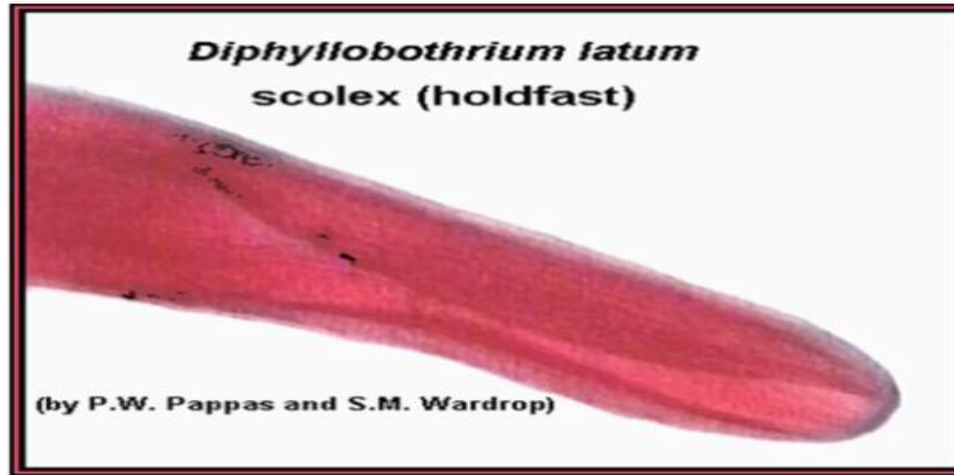
**Morphology:**

**Egg:** pale yellow and ovale in shape ,has an operculum,contains amass of granulated, yolk cell surrounding an un developed ovum ,small projection is seen at the non-operculated end of the egg.



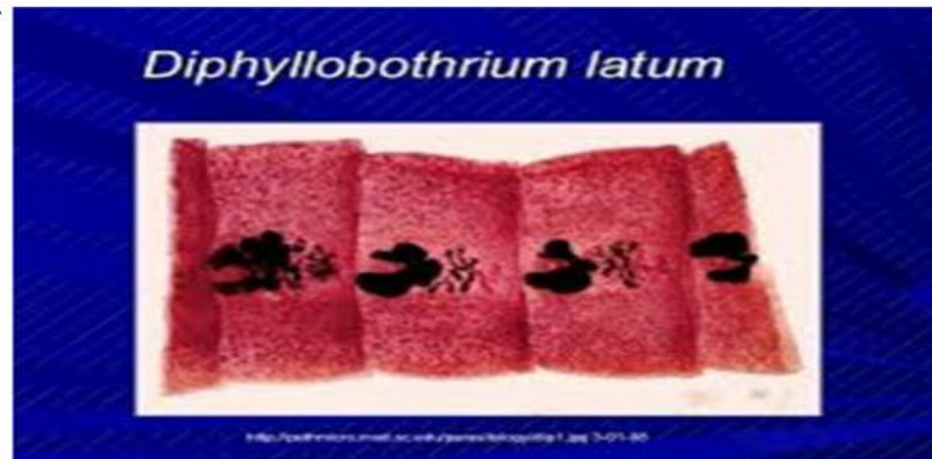
**larva stage:** plerocercoid larva.

**Head:** almonds –shaped ,length 2-3mm, provided by tow groove (dorsal & ventral).



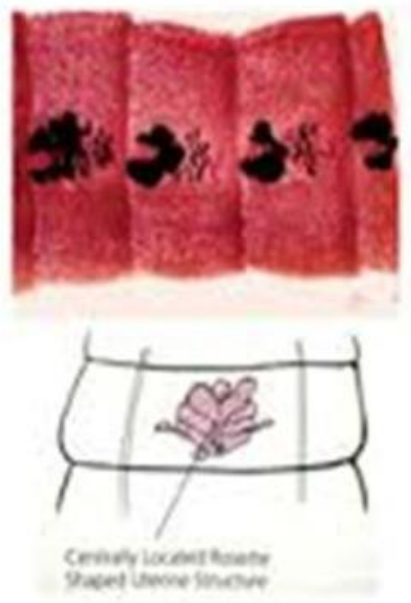
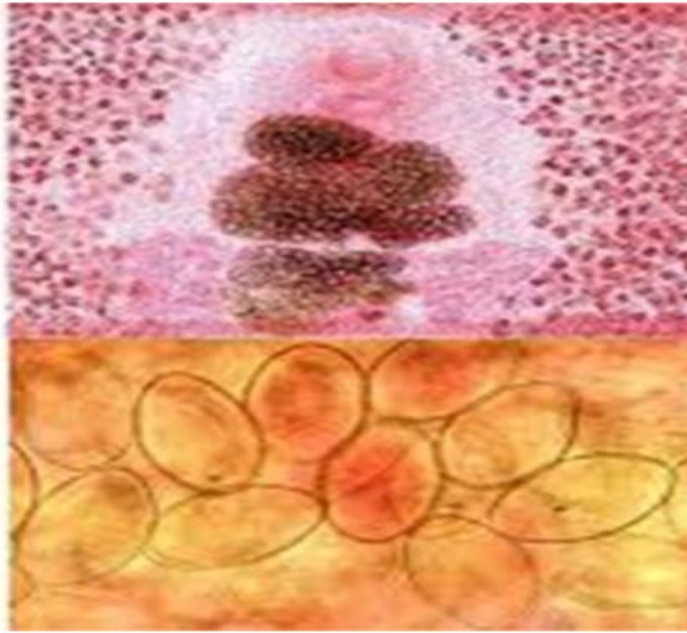
**Mature segment:**

a large number of testes both side of the mature segment ,ovary with tow lobes behind to segment, found vitelline glang both side of it,uterus located centrally and similar rose.



**gravid segment:** like square filled with eggs.







# Thank you