

Viscera inspection

1. Lungs

Lung should be Viewed, palpated, and the larynx, trachea and main bronchi should be opened along their length.

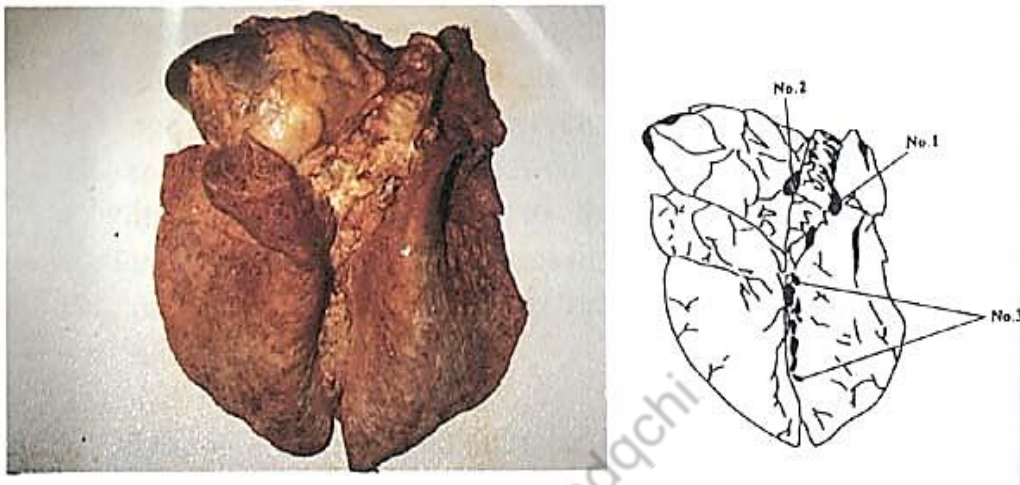


Fig 1: Lung inspection - Bronchial left (No. 1) and right (No. 2) and mediastinal (No. 3) lymph nodes are viewed and incised.

2.Heart

Heart should be viewed, palpated, and opened along their length.



Fig 2: Heart inspection - Lengthwise incisions (minimum four) from base to apex into the heart muscles. Observe cut surfaces.

3. Liver

Liver and gall bladder should be View, palpate entire surface (both sides), and opened to detect liver flukes

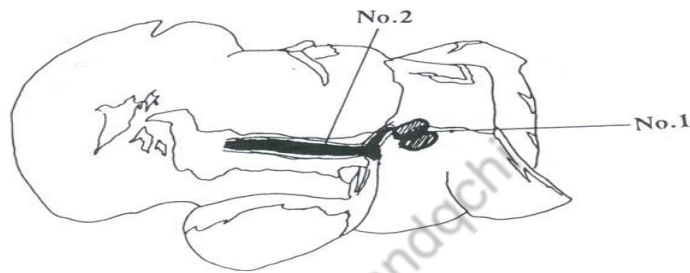


Fig 3: Liver inspection - Incised portal (hepatic) lymph nodes (No. 1) and opened large bile duct (No. 2).

4. Spleen

Spleen should be Viewed and palpated



Fig 4: Spleen inspection - Viewing and palpation of spleen.

5. Gastrointestinal tract



Fig 5: Viewing of rumen, reticulum, omasum and abomasum



Fig 6: Viewing and incision of the mesenteric lymph nodes. In this case an incision was performed to demonstrate the mesenteric lymph nodes chain