

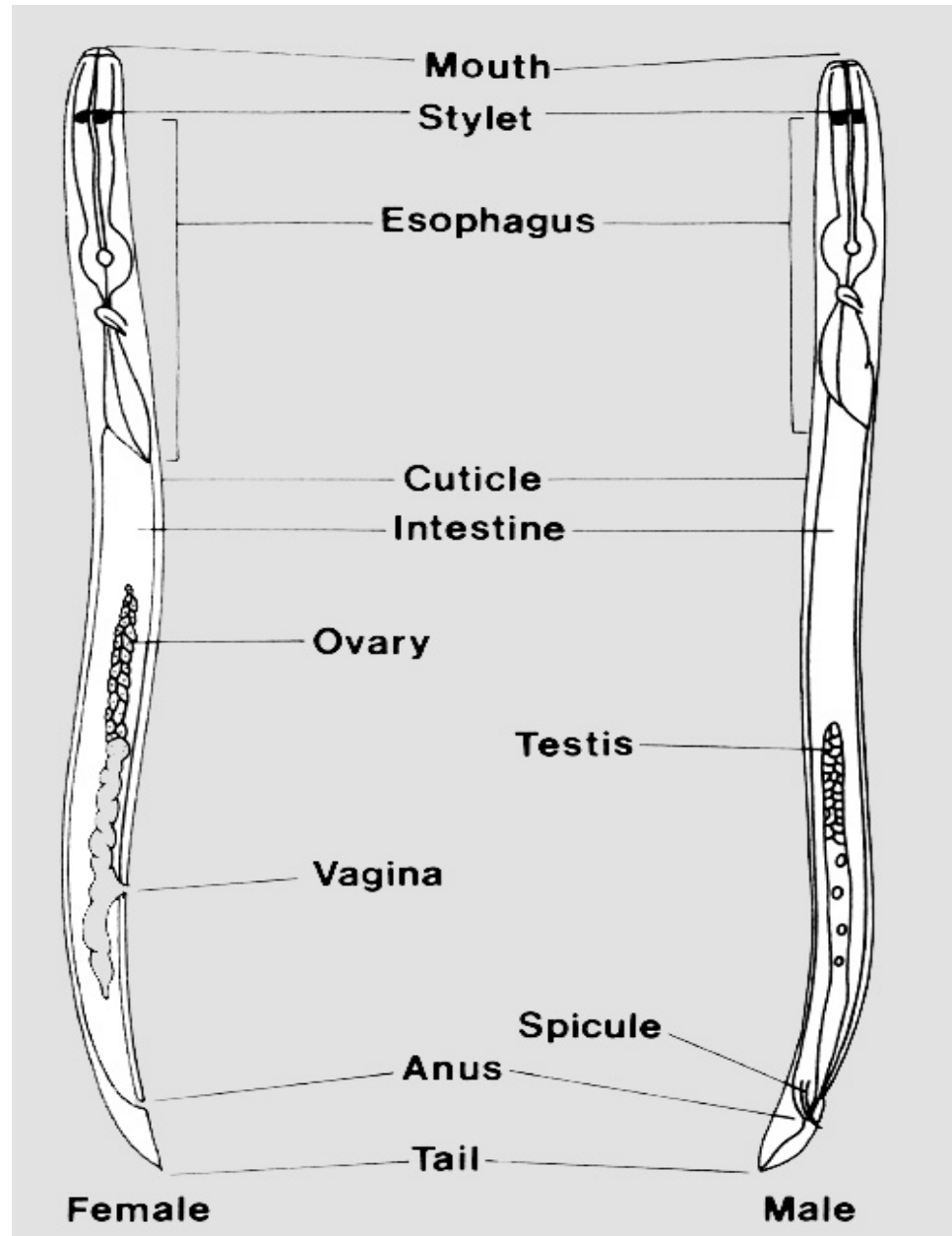
جامعة البصرة

كلية التربية \القرنة \قسم علوم الحياة

• أ.د. علي ضرب شعبان

• الطفيليات

# Form and setractor



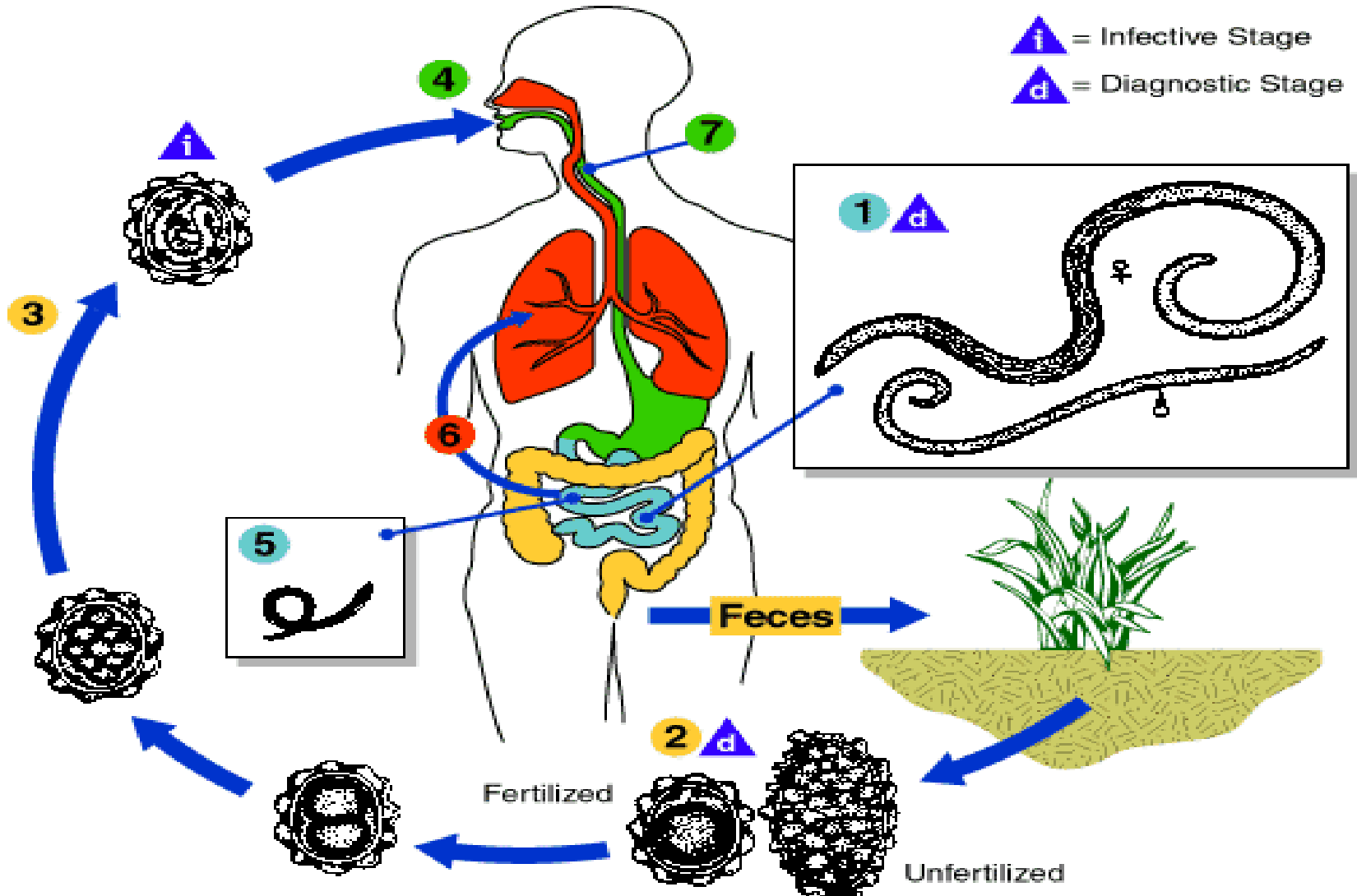
# Classification

- Subclass :Secernentea(Phasmodia)
- Order:Ascaridida –*Ascaris lumbricoides*
- Order:Strongylida - *Ancylostoma, Necatore*
- Order :Oxyurida –*Enterobius vermicularis*
- Order :Spirurida- *Wucheria bancrofti*
- Subclass Adenophorea –*Trichinella spiralis*

# *Ascaris lumbricoides*

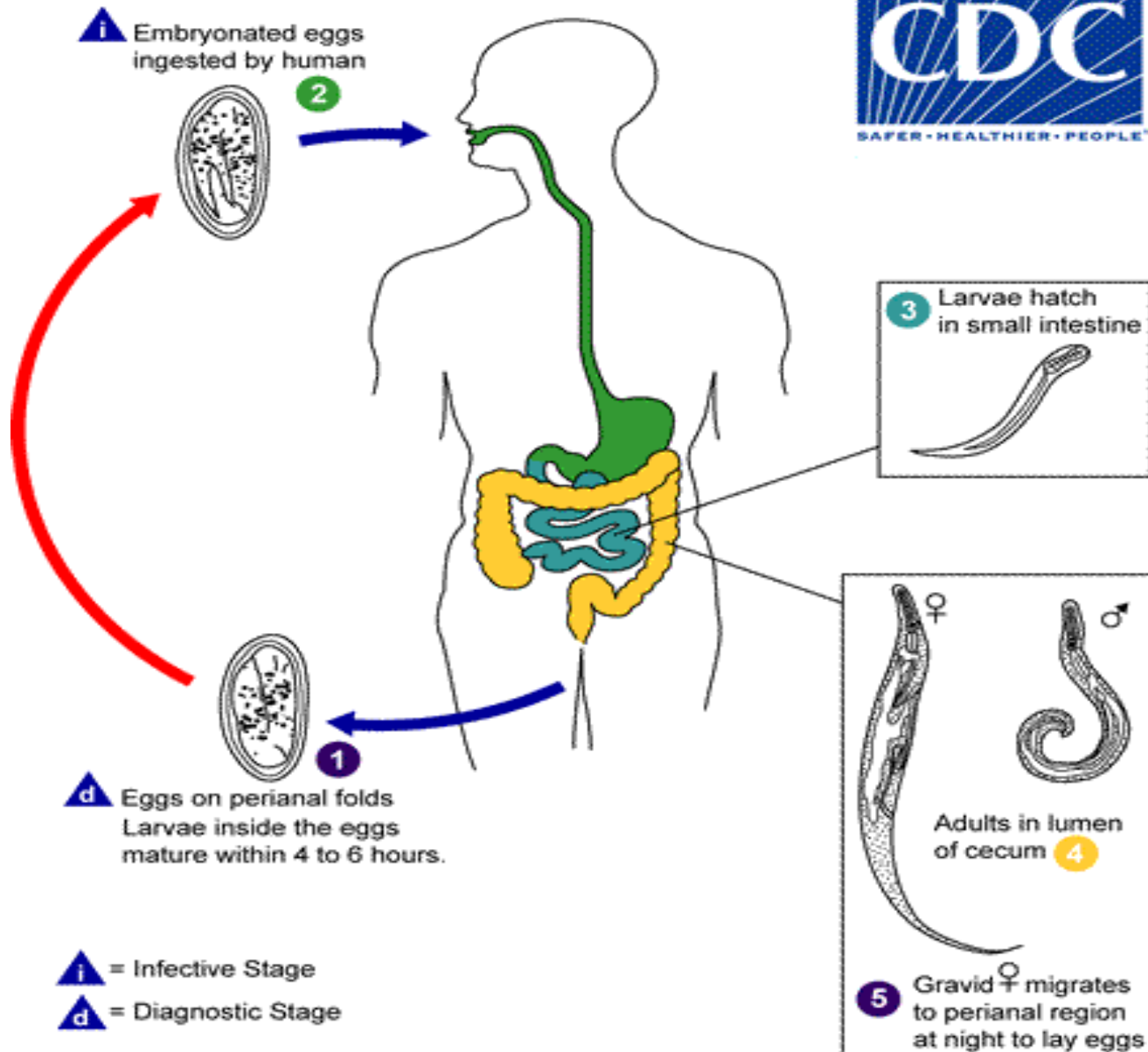


# *Ascaris lumbricoides* life cycle





# *Enterobius vermicularis*

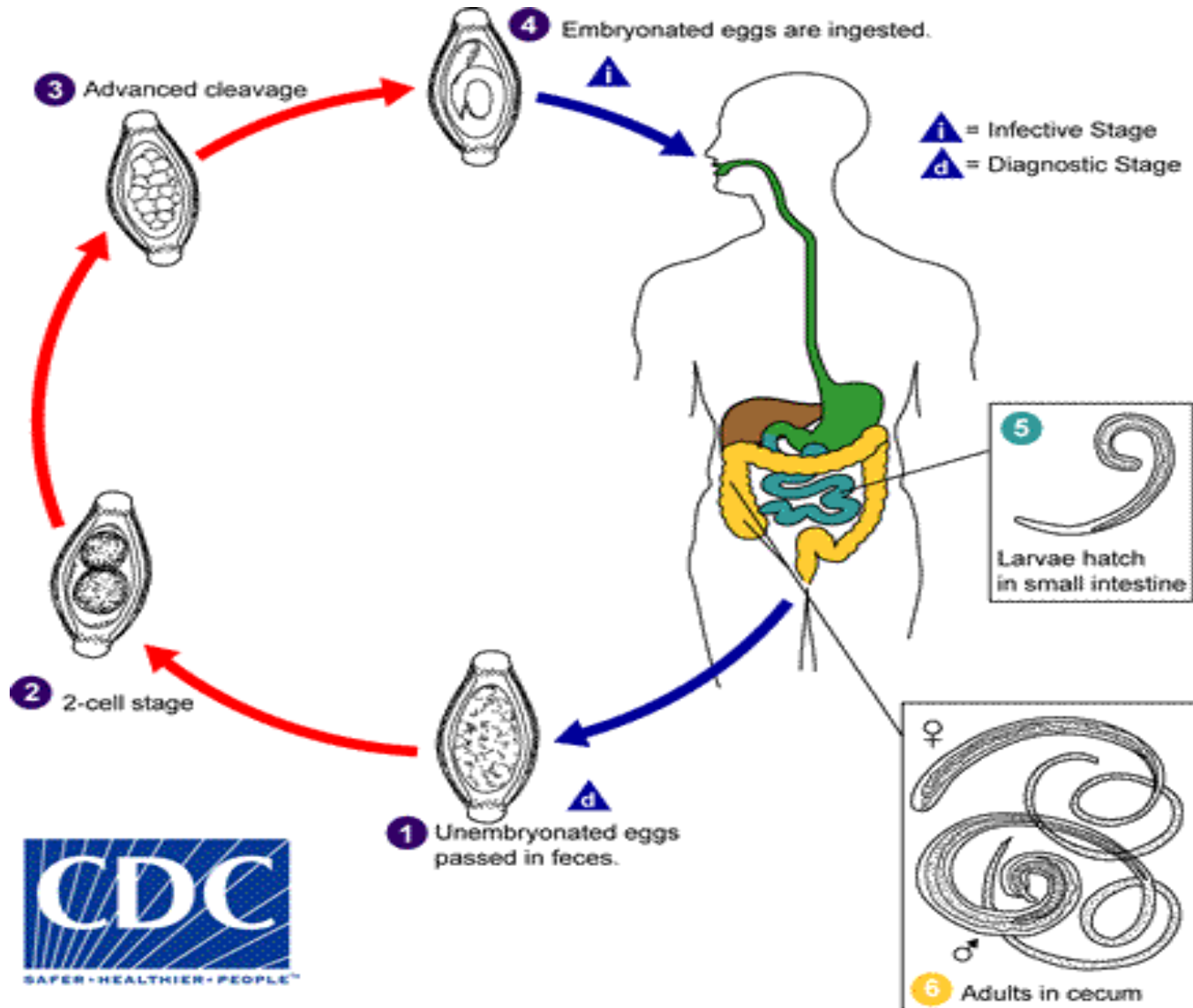








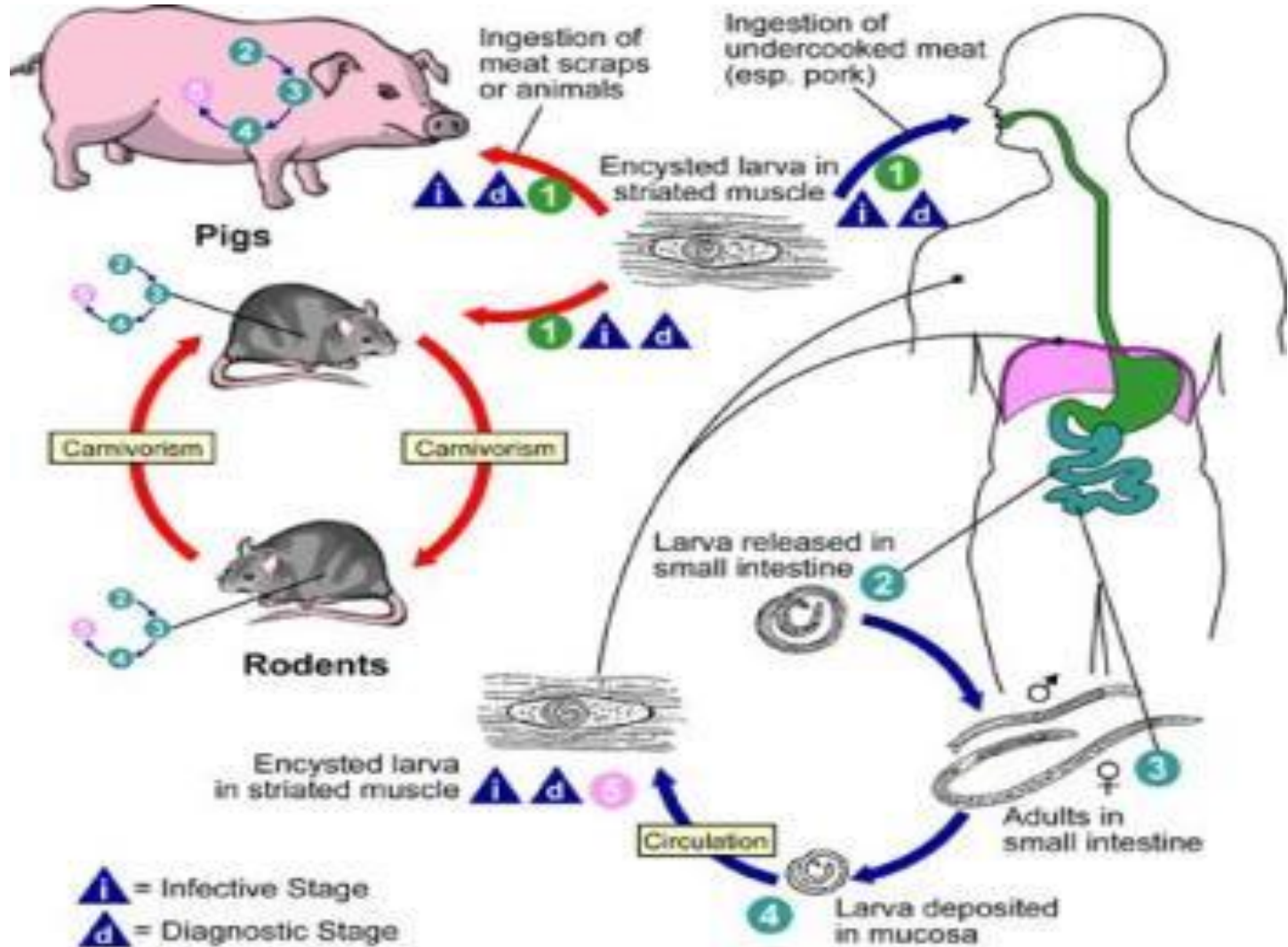
# *Trichuris trichiura*



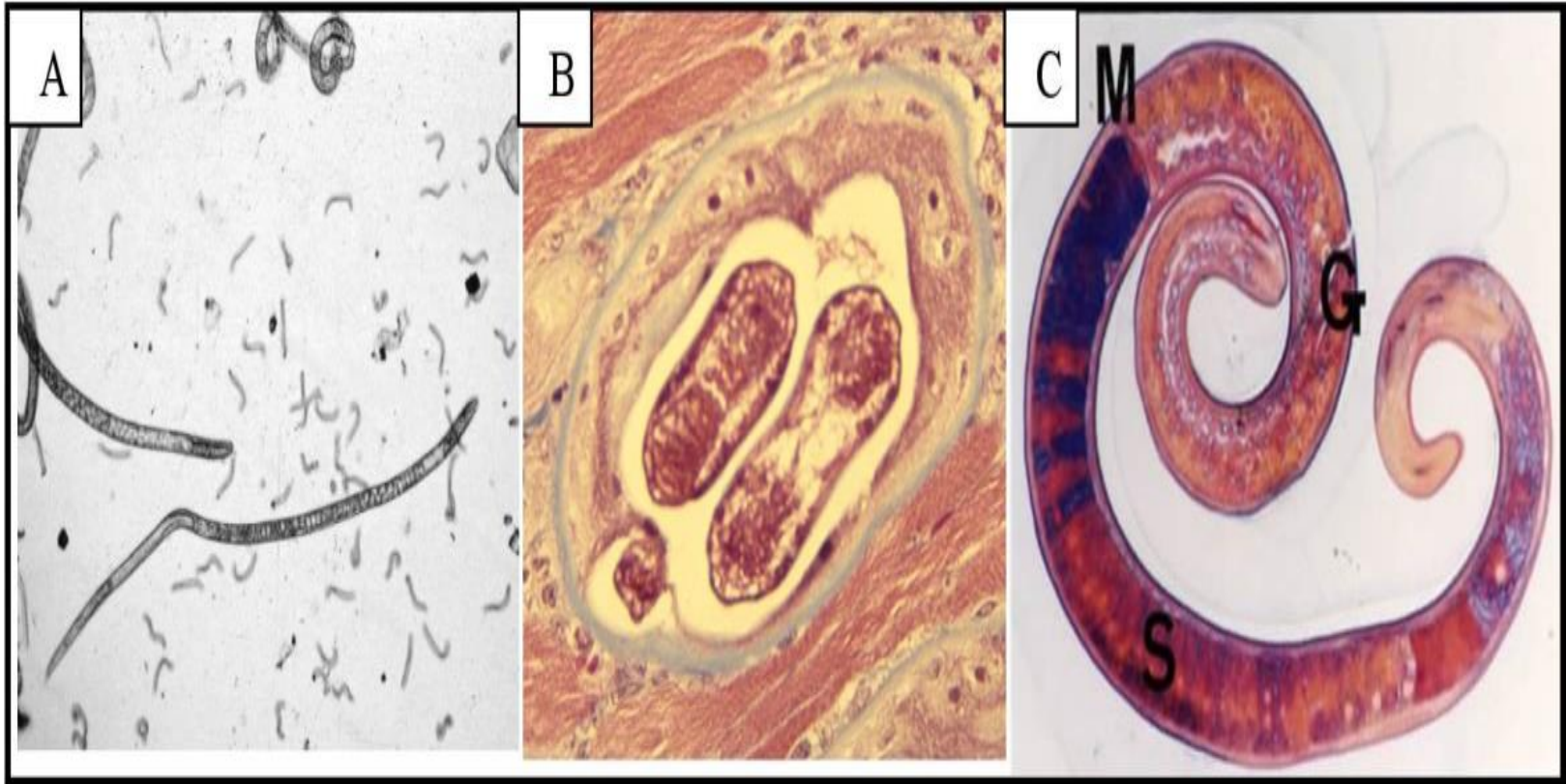




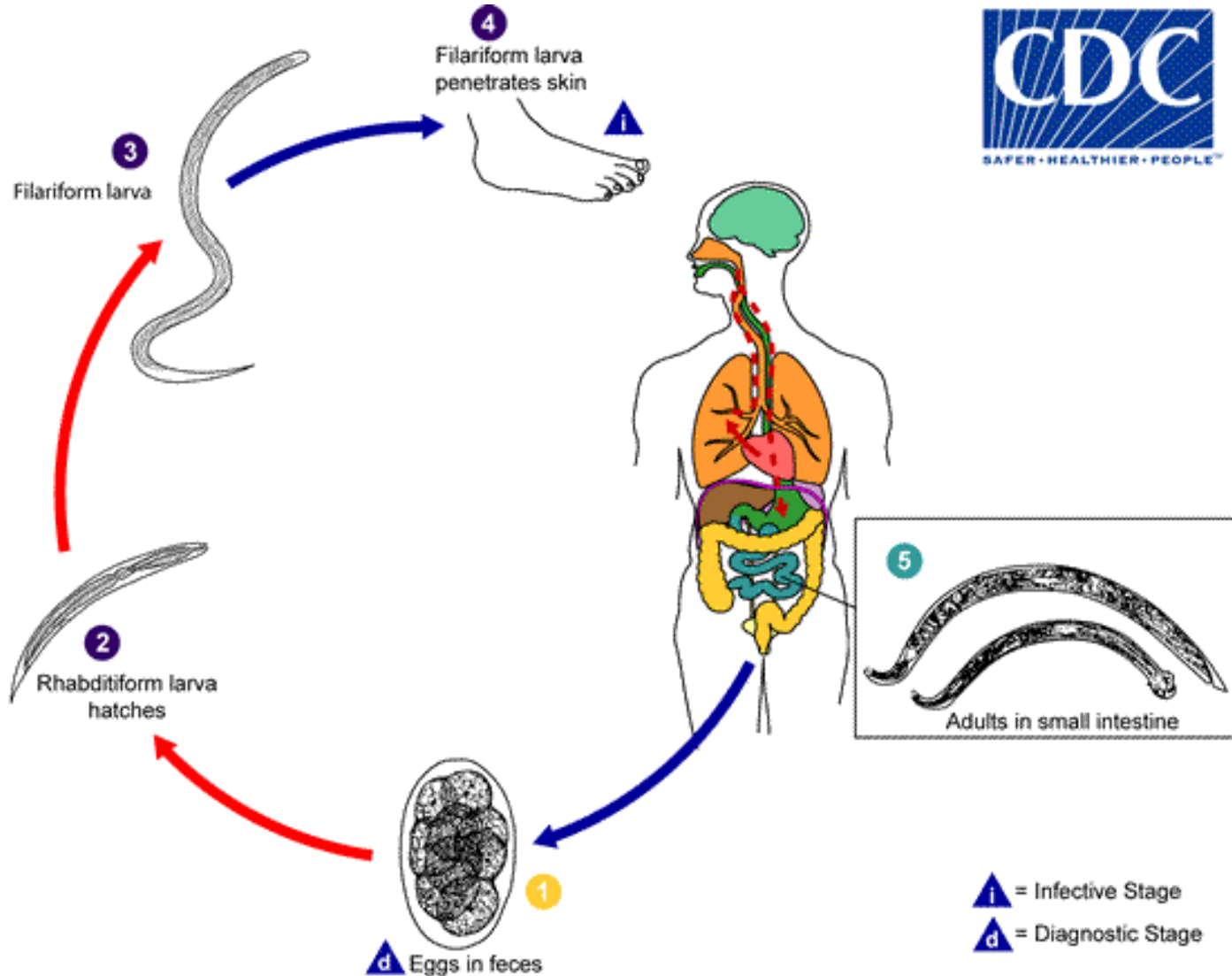
# *Trichinella spiralis*







# *Ancylostoma doudenale*





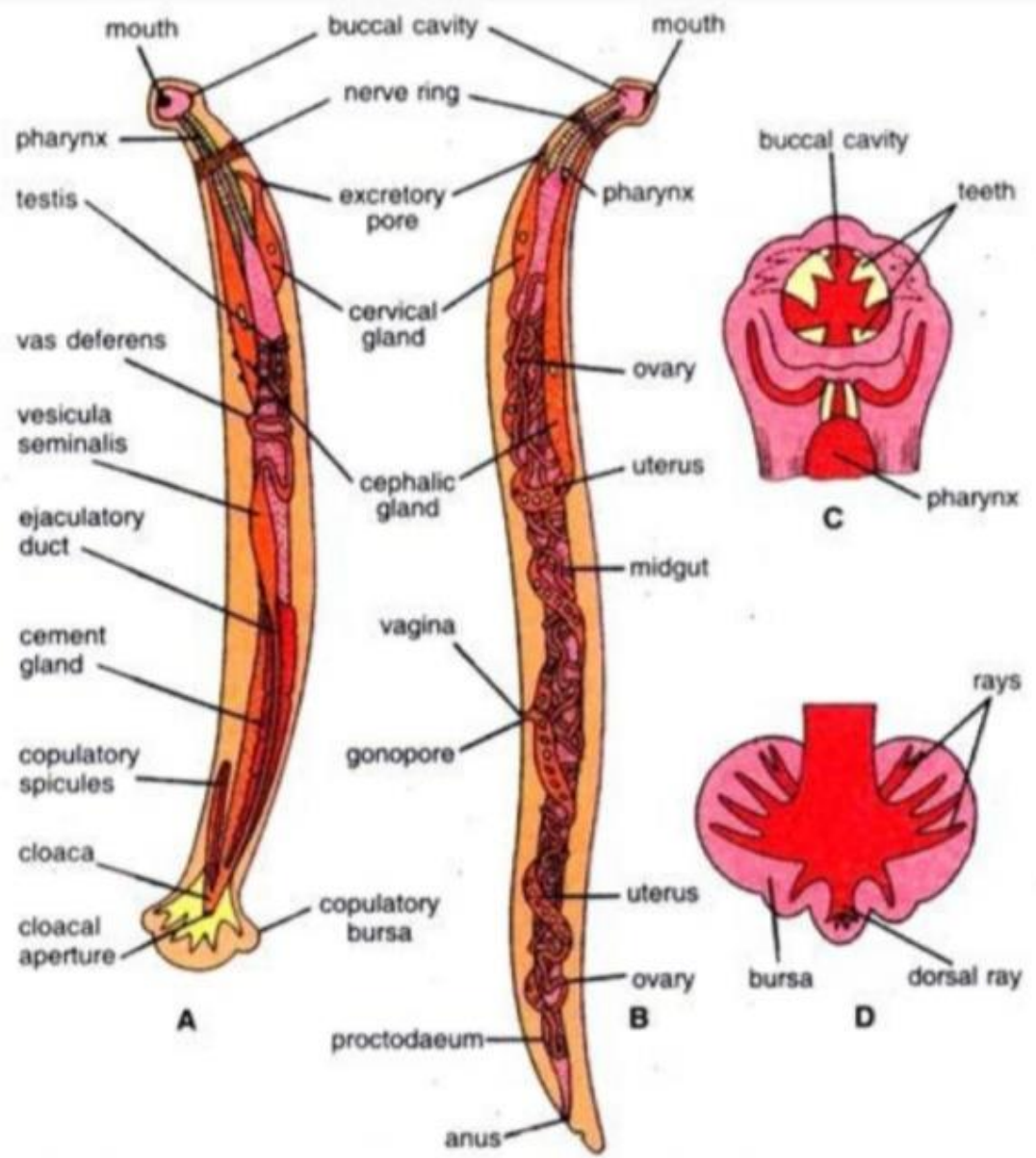
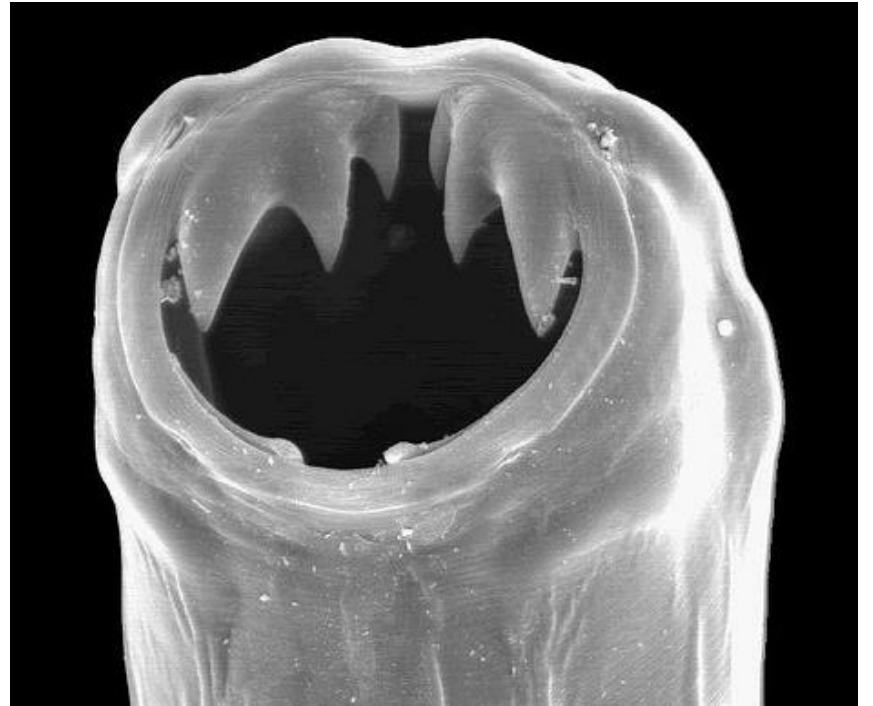
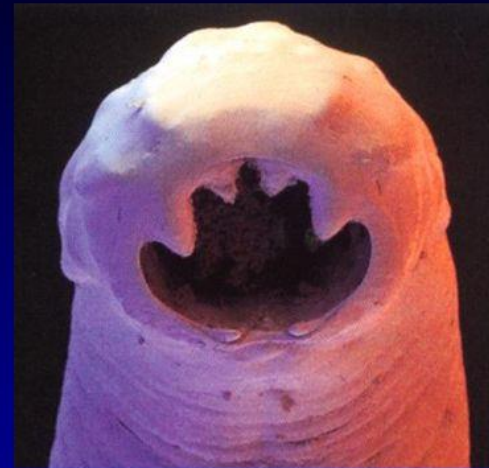


Fig. 47.1. *Ancylostoma duodenale*. A—Adult male; B—Adult female; C—Anterior end; D—Posterior end of male.



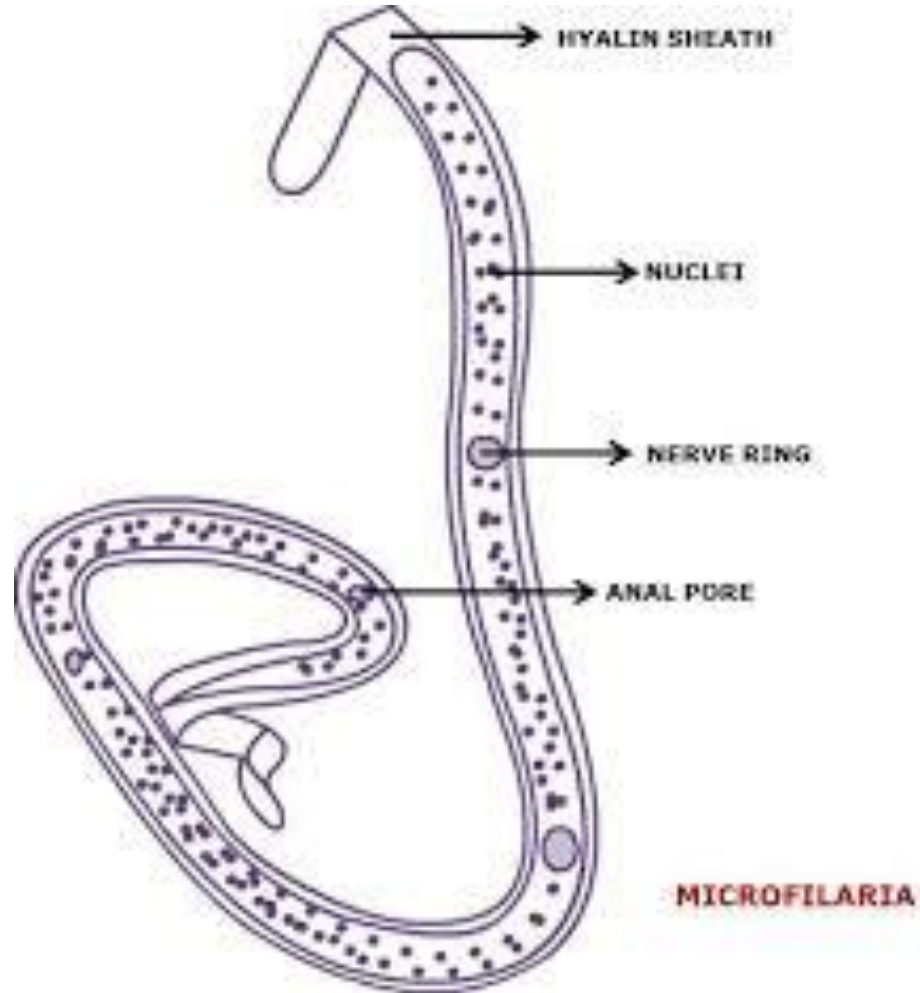


*Necator americanus*



*Ancylostoma duodenale*

# *Wuchereria bancrofti*



Male

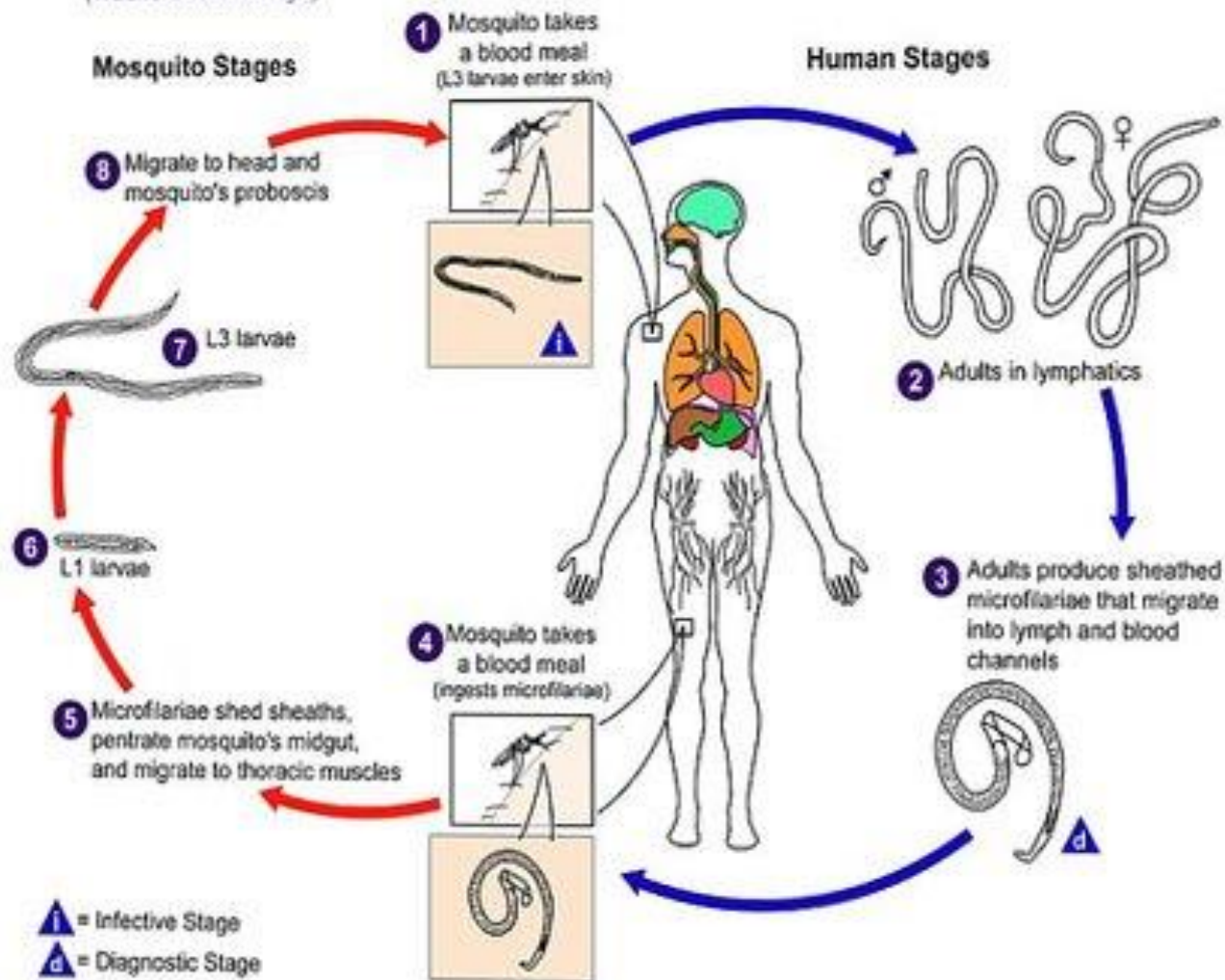
Female



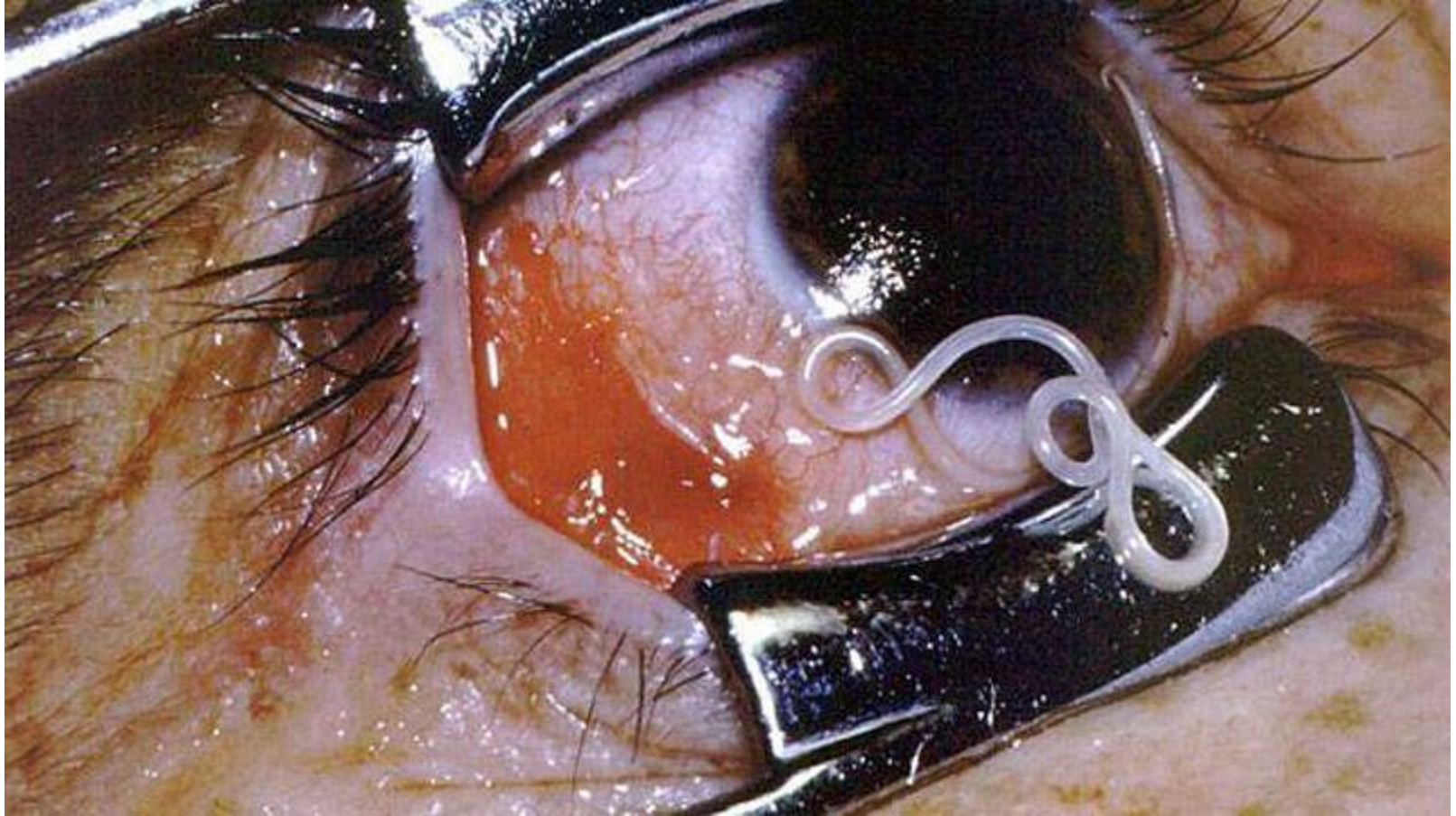
Fig. 6.10 : Adult worms of *W. bancrofti* (natural sizes)

# Filariasis

(*Wuchereria bancrofti*)



# *Loa loa*



# Loa loa

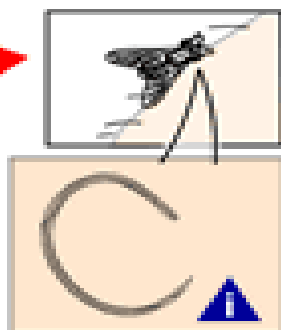
## Etape de la mouche

La mouche prend un repas de sang

## Etape humaine

Migration vers la tête et la trompe de la mouche.

1



Larve L3 injectée dans la plaie

La mouche prend un repas de sang

4

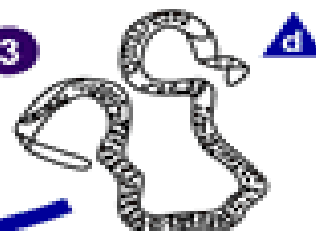


Ingestion de microfilaries

2

Adultes dans le tissu sous cutané

3



Les adultes libèrent des microfilaries engainées retrouvées dans le LCR, le sang, l'urine, les crachats et les poumons.

6 Larve L1

Les microfilaries traversent la paroi intestinale et migrent vers les muscles thoraciques.

5



8

Larve L3

7

= Etape infectieuse

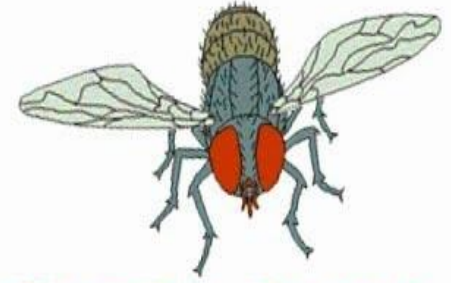
= Etape diagnostique







# LOIASIS -



# A LOA LOA INFECTION



# *Dracunculus medinensis*

