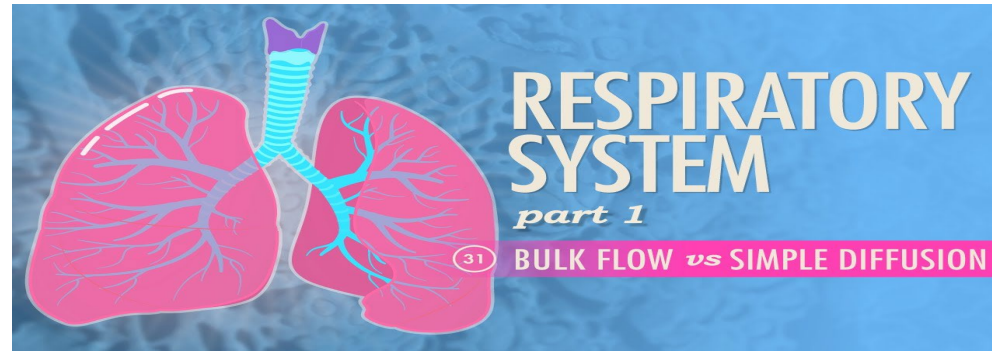


Practical Lesson of Human Histology

Respiratory System

Sunday, 05/02/2023

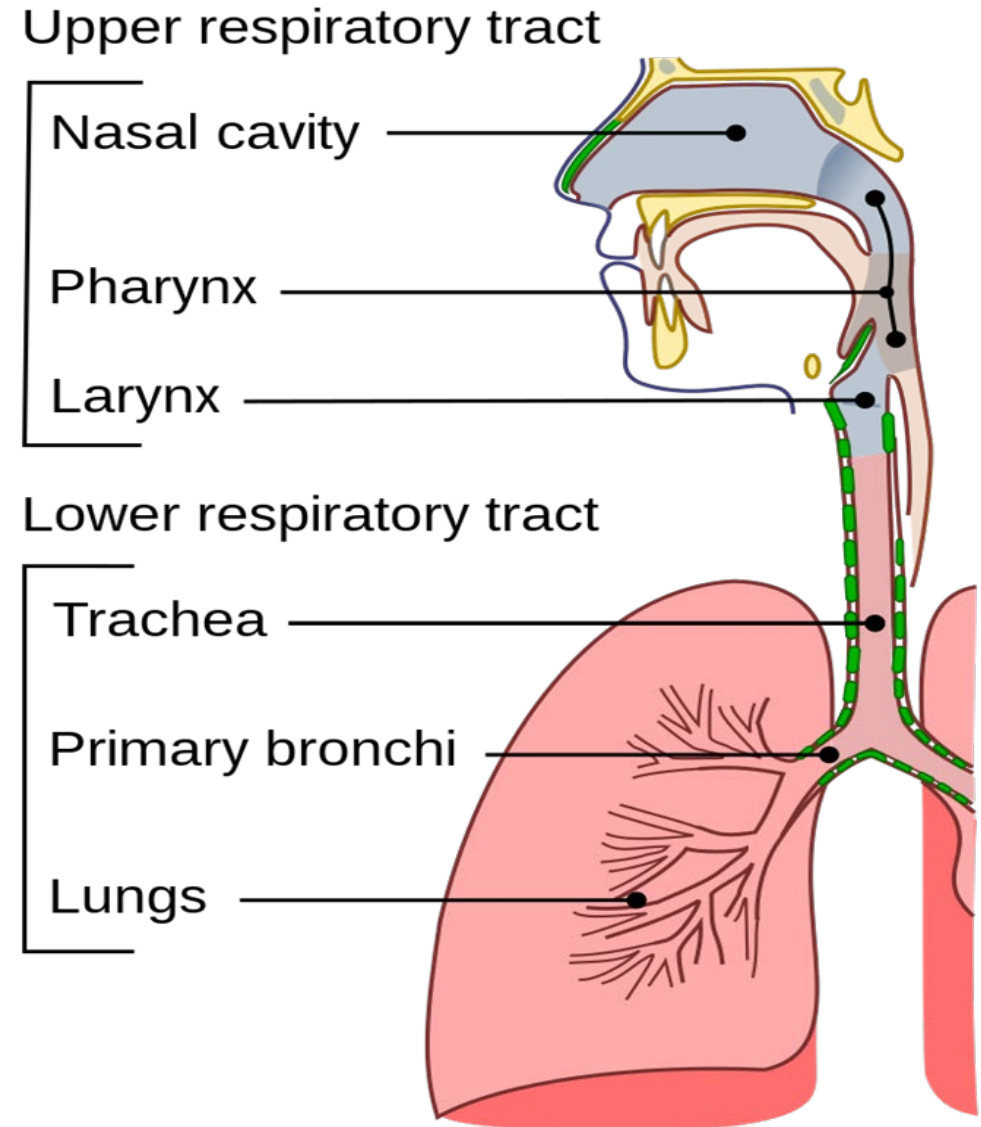


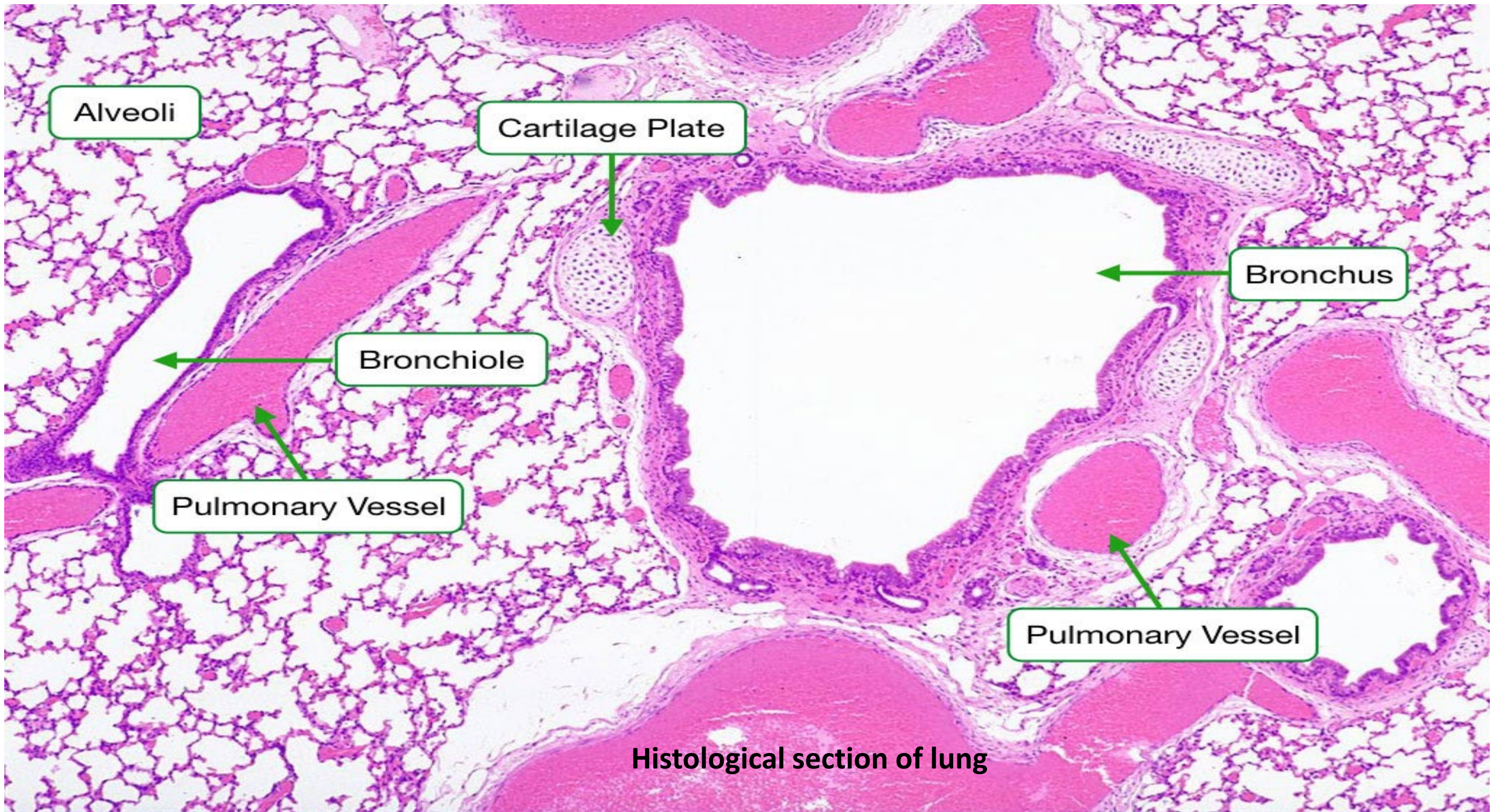
Assistant Lecturer
Hussein Mohammed Abbood

Lung Histology

➤ The normal histology of lung, including the structures associate with :

- ✓ Alveoli
- ✓ Bronchioles
- ✓ Bronchus

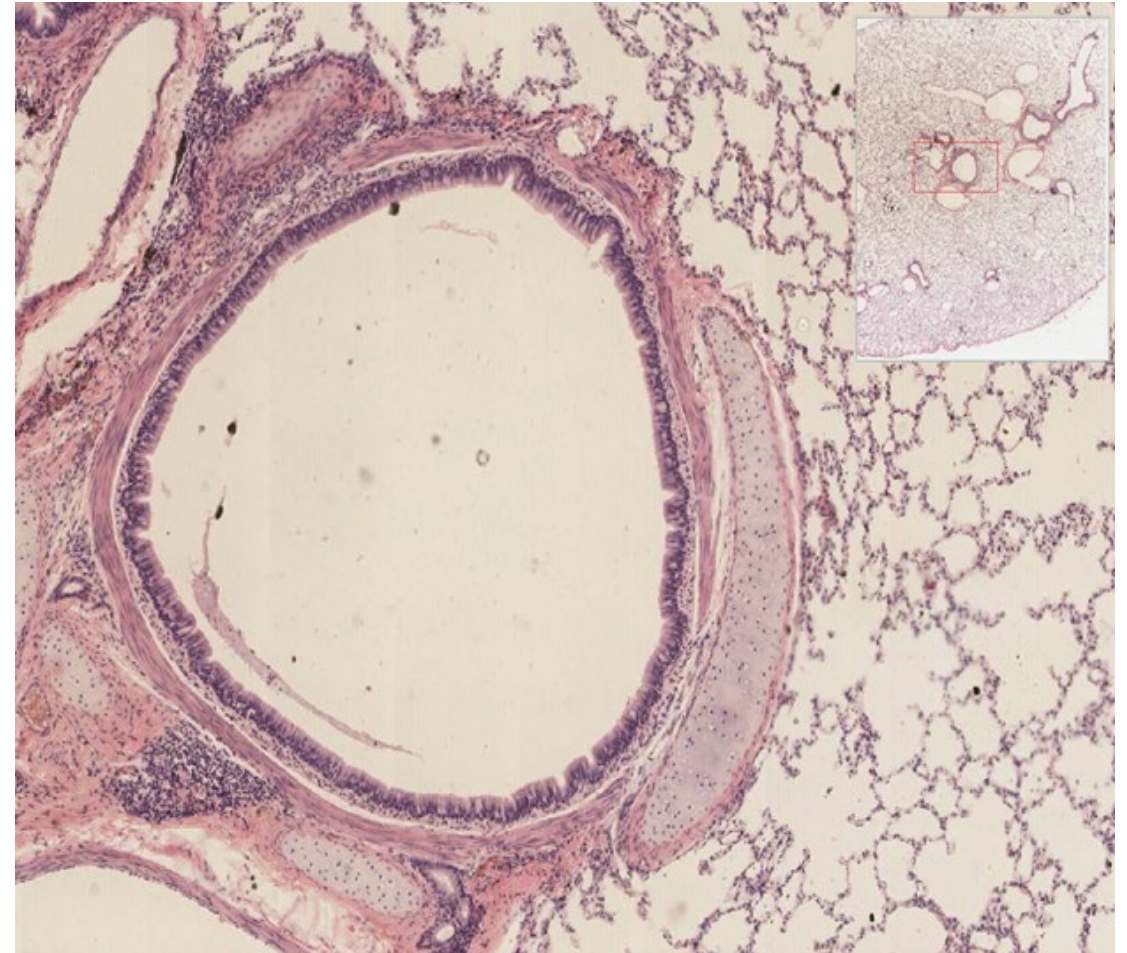




Histological section of lung

Bronchus

- It is a large airway which connect trachea to bronchioles lined by the respiratory epithelium of pseudostratified ciliated columnar and it includes :
 - ✓ Lamina propria
 - ✓ Some smooth muscles
 - ✓ Plates of cartilages



Bronchus in lung

Bronchioles

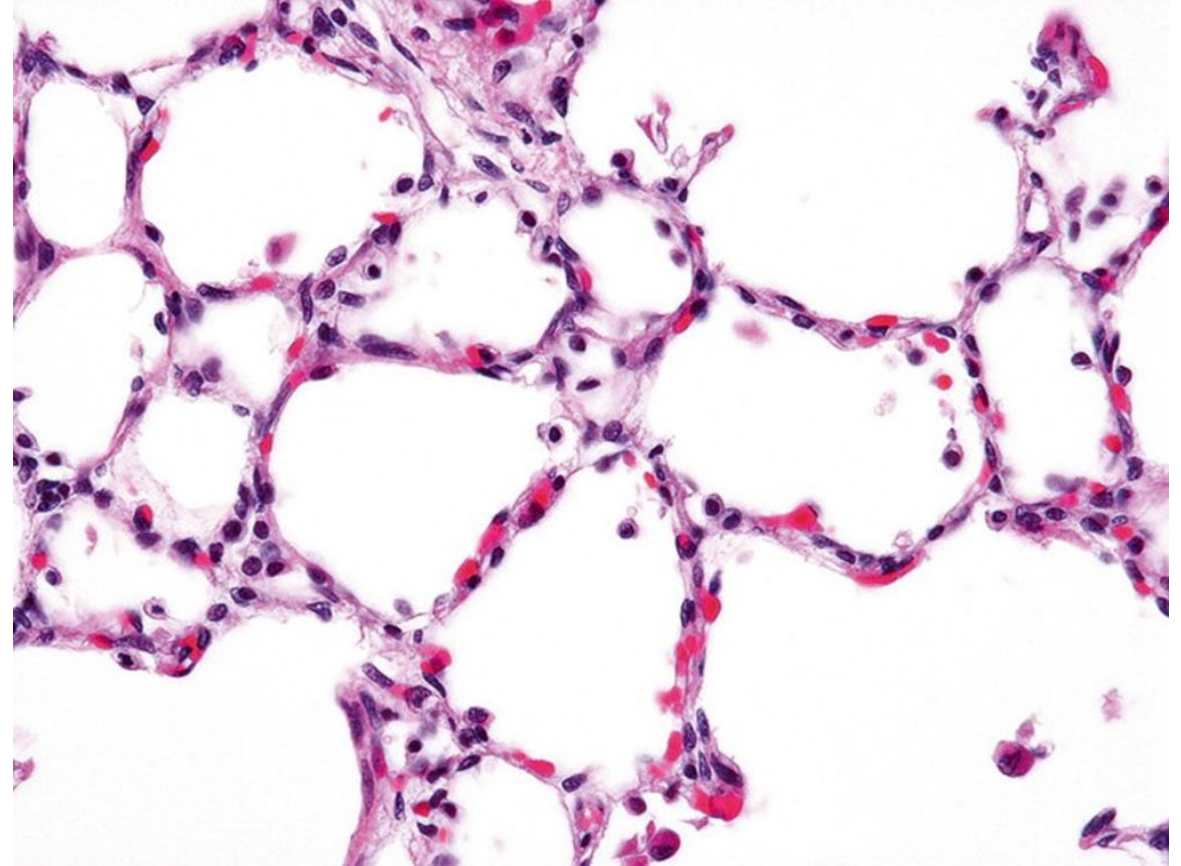
- The smallest air ways that lead to tiny air sacs (alveoli).
- The bronchioles are lined by simple columnar to the cuboidal epithelium.
- There is no cartilages associated with bronchioles, only smooth muscles



Bronchiole in lung

Alveoli

- The alveolar spaces that make up most of the lung
- The alveolar spaces are lined by Type 1 and Type 2 of pneumocytes
- Type 1 are squamous, or flat and constitute 95% of the pneumocytes.
- Type 2 are cuboidal and constitute only about 5% of the pneumocytes.



Alveoli in lung