



Harmala alkaloids

Ass. Lec. Riham Adnan
Dep. Of Pharmacognosy/
collage of pharmacy/
university of Basra

CONTENT

Introduction

β -carboline alkaloids

Effects

Medicinal uses

Side effects

Extraction technique



Introduction

Peganum harmala (common name
Syrian rue)

Family: Zygophyllaceae

Genus: *Peganum*

Species: *Peganum harmala*



Introduction

Peganum harmala (common name
Syrian rue)

Family: Zygophyllaceae

Genus: *Peganum*

Species: *Peganum harmala*





Introduction

Peganum harmala (common name
Syrian rue)

Family: Zygophyllaceae

Genus: Peganum

Species: *Peganum harmala*

Introduction

Peganum harmala (common name
Syrian rue)

Family: Zygophyllaceae

Genus: *Peganum*

Species: *Peganum harmala*

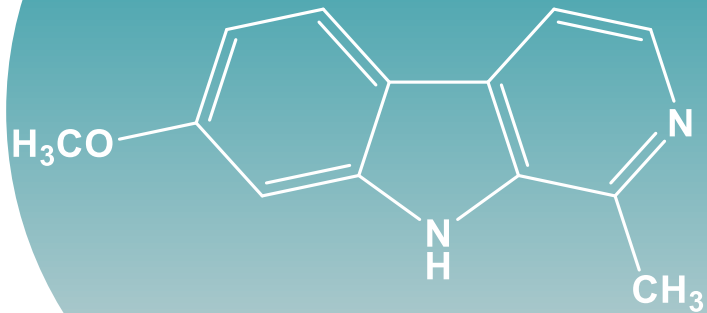


Introduction

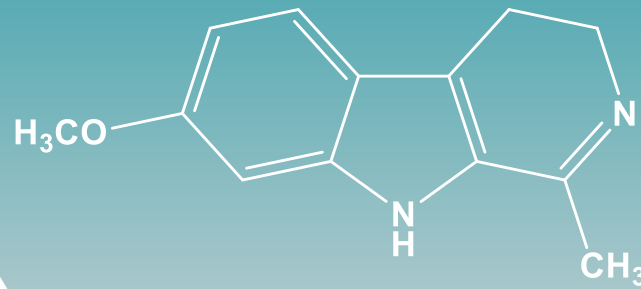
Peganum harmala is known as a major source of alkaloids including β -carbolines(indole) such as harmine, harmaline, harman and harmalol, and quinazoline alkaloids such as vasicine) .

β -carbolines alkaloids

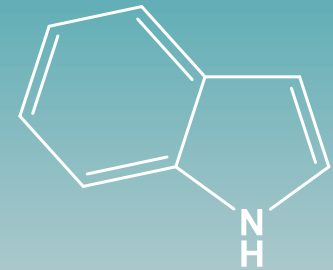
Harmine



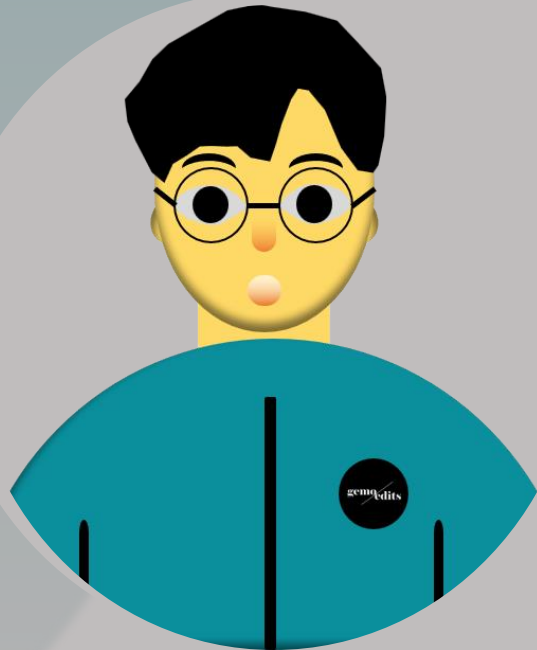
Harmaline



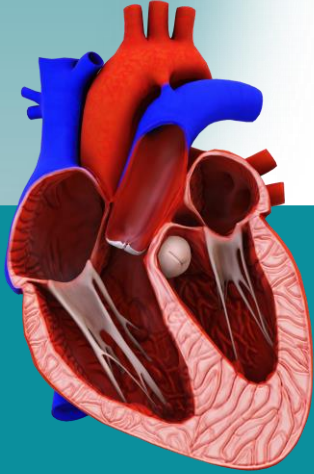
Indole



EFFECTS



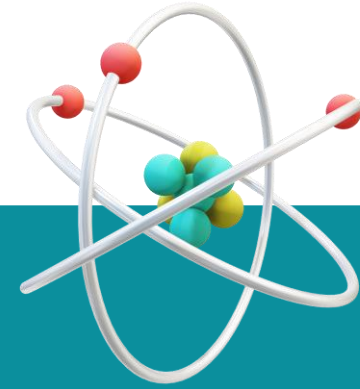
Harmala alkaloids showed a variety of biochemical, psychopharmacological, and behavioral effects on humans.



Treat hypertension
and cardiac disease



Parkinson`s disease
Psychiatric conditions
Relieve pain.



immuno-
modulatory effects
Antinflammatory
Antineoplasm



Medicinal
using for
harmine &
harmaline

- 1- Act as MAOI-A (monoamine oxidase inhibitor A) compounds.
- 2- Anticancer Activity by inhibit DNA topoisomerases and interfere with DNA synthesis.
- 3- Antileishmanial effect.

Vomiting

Hallucination

Slight elevation of body
temperature

Bradycardia and low blood
pressure



Side effects

EXTRACTION

HINT!

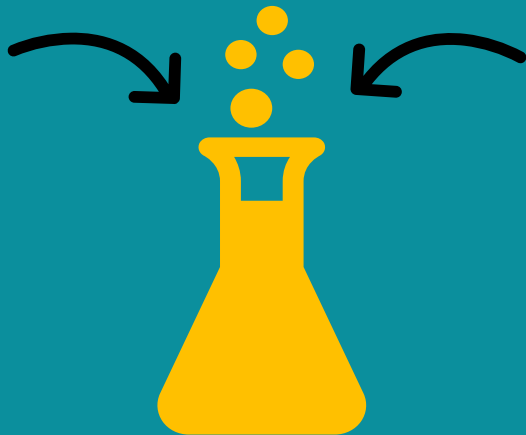
Harmine
& harmaline slightly
soluble in water,
alcohol & ether but
soluble in hot
alcohol & dilute acid

EXTRACTION

1. Defatting step
(30 min.)

30 gm seeds
powder

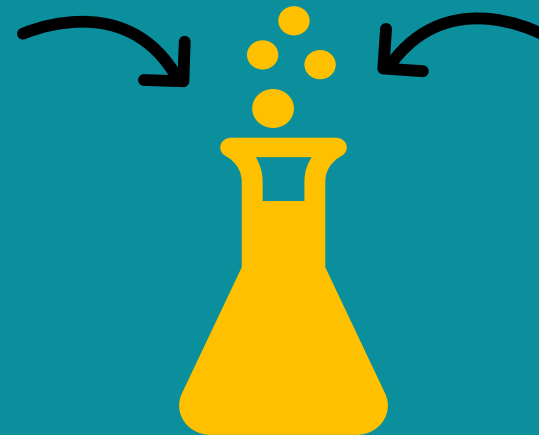
65 ml hexan



Filtration
and take the
residue

2. Extraction step
(boiling 30 min./ 50 C)

120 ml of
(5% HCL) and
(60% MeoH)



EXTRACTION

3. Centrifuge the
filtrate
(5 min.)

filtrate



4. methanol
evaporation by
heating

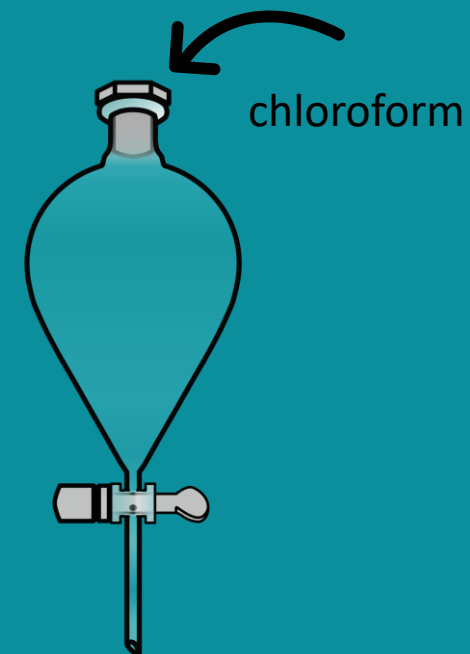


5.alkalinization

NaOH
(25%)



6. isolation



Detection test

Wagner reagent

1 ml of extract + drop by drop
of reagent → Brown ppt



Thank you!