

Intestine : it is a tube extend from stomach to the anus,  
it is dividing into: small intestine and large intestine

1 – small intestine

\*duodenum

\*jejunum

\*ileum

Small intestine :

Duodenum : short , it is U shape, fixed part of small intestine to the abdominal roof by mesoduodenum , consist of two parts and three curvatures.

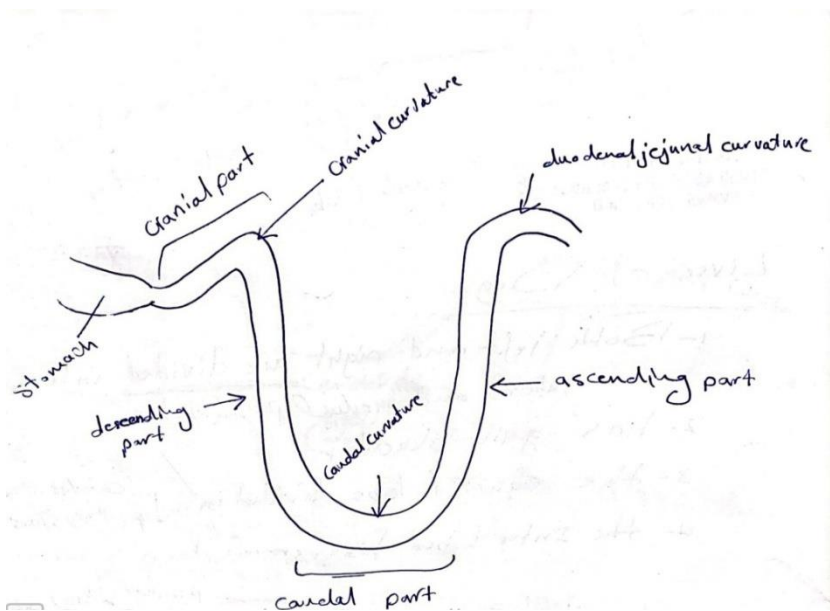
-cranial part /descending part

-caudal part/ ascending part

\*Cranial curvature

\*Caudal curvature

\*Duodeno jejunal curvature



Jejunum : the largest part of small intestine 90%, appear empty , less fixed in position, has long mesentery.

Ileum : the shortest part of small intestine about 20-30 cm, straight tube , thick wall , has mesentery .

## 2- large intestine

\*cecum

\*colon

\*rectum

## Cecum in horse

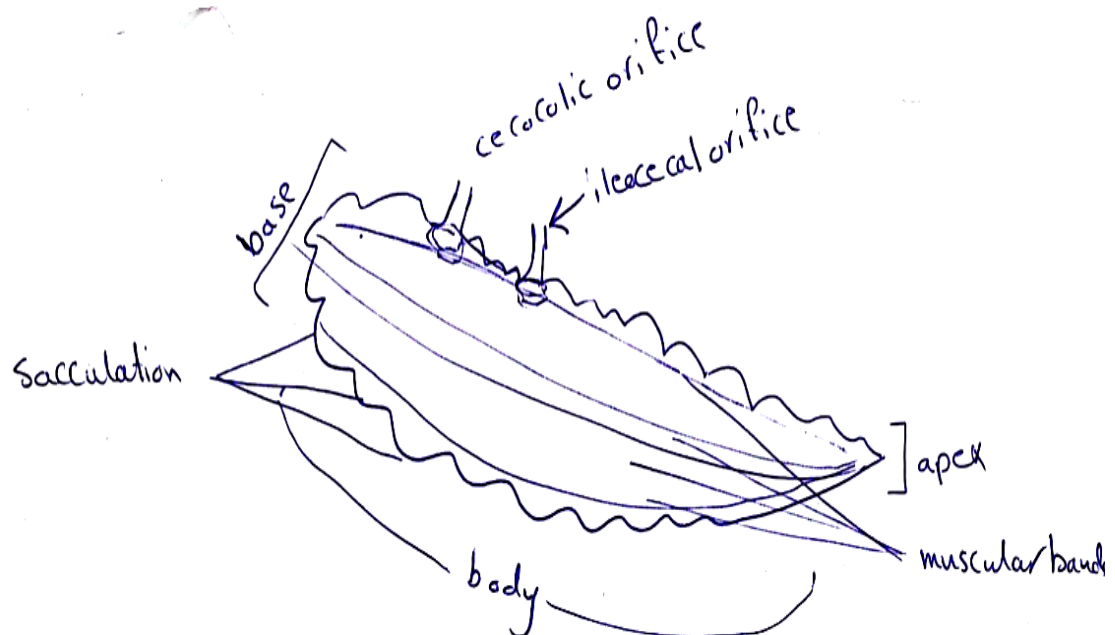
-comma shape , about 90 cm, consist of base , body, apex.

-has two orifices -ileo cecal orifice

-Ceco colic orifice

-has taenia and sacculation , 4 muscular band  
(ventral,dorsal,lateral, medial)

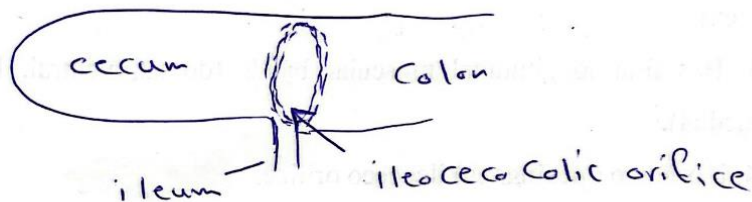
Cecum in horse :



## Cecum in ruminant

- Cylindrical in shape, about 20-30 cm length.
- has one common orifice (ileo ceco colic).
- no muscular band , no sacculatation .

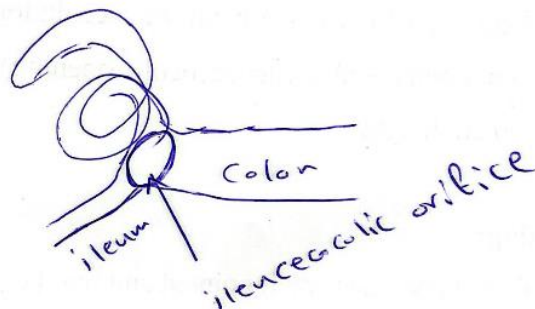
Cecum in ruminant :



## Cecum in dog :

- It is spiral in shape , about 2-3 cm length
- has one common opening (ileocecocolic opening).
- no muscular band , no sacculatation.

Cecum in dog :



Colon :

In horse :

- Very long, has muscular band and sacculation

Consist of 4 part and 3 flexure:

Ventral right colon

Ventral left colon

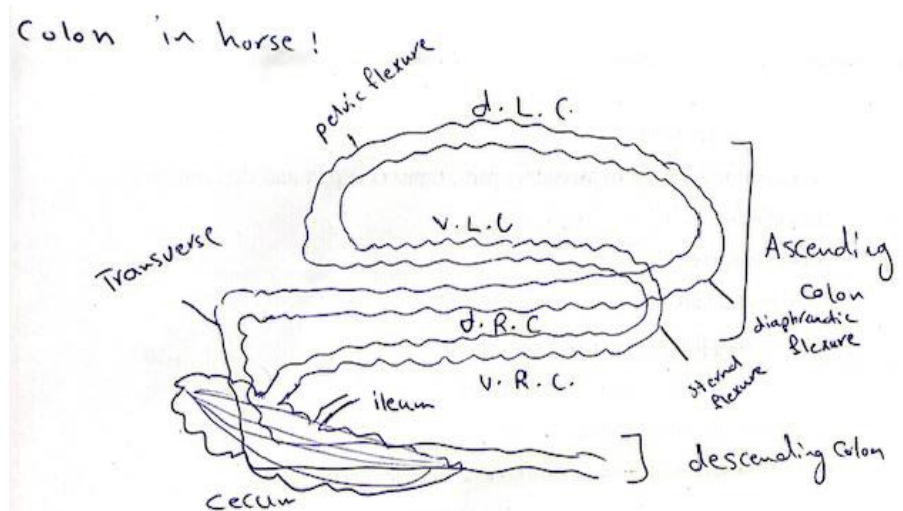
Dorsal right colon

Dorsal left colon

Sternal flexure

Pelvic flexure

Diaphragmatic flexure



Colon in ruminant :

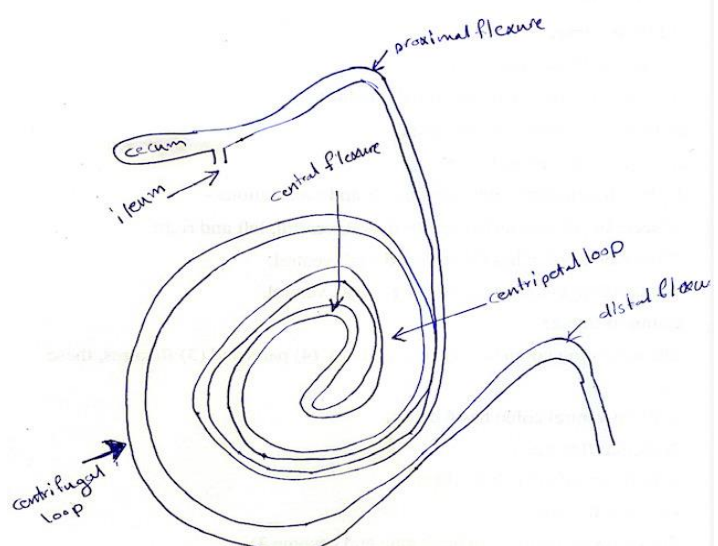
Consist of two loops and 3 flexure

Centripetal loop

Centrifugal loop

Proximal flexure (ansa)

Central flexure (ansa)



Colon in dog :

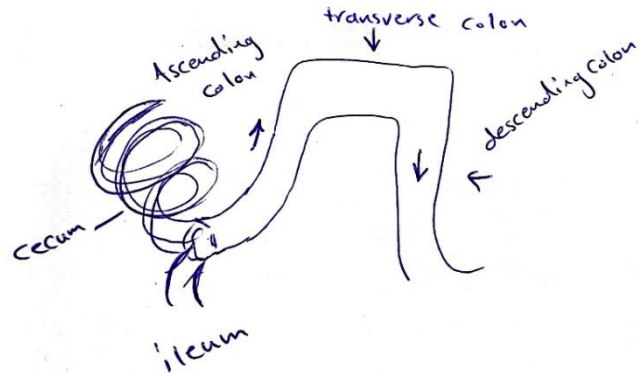
Consist of

Ascending colon

Transverse colon

Descending colon

Colon in dog!



Rectum :

-is the terminal part of large intestine , located in pelvic cavity.

-in horse about 12-25 cm length.

-anal canal the short canal that extend to the anus which control by internal and external sphincter muscle.

