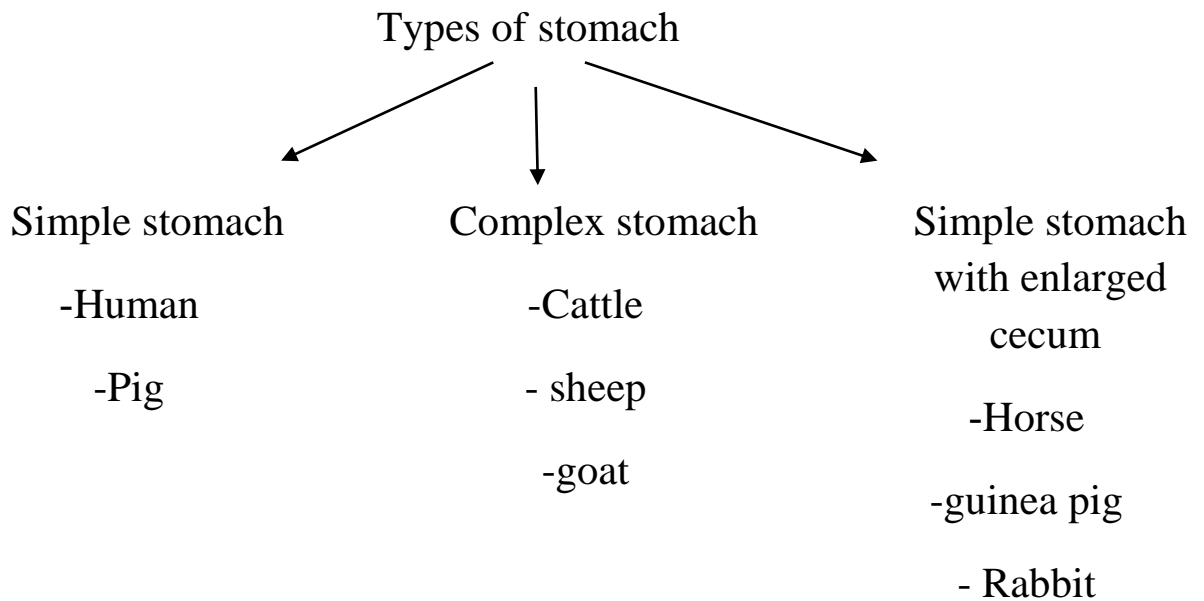


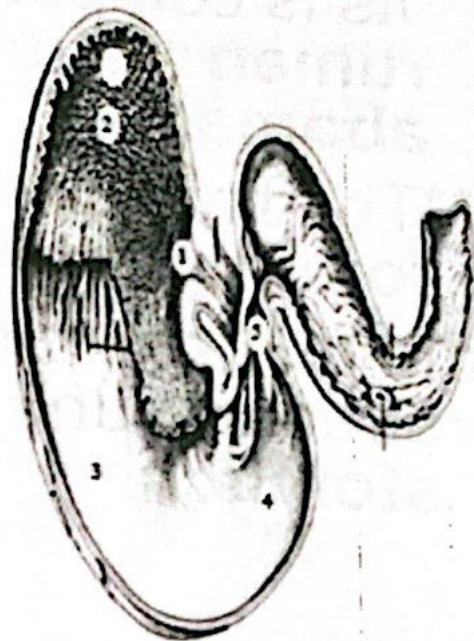
Stomach

is a hollow dilated part of digestive system, which function as an important role in digestion , located between the esophagus and small intestine.

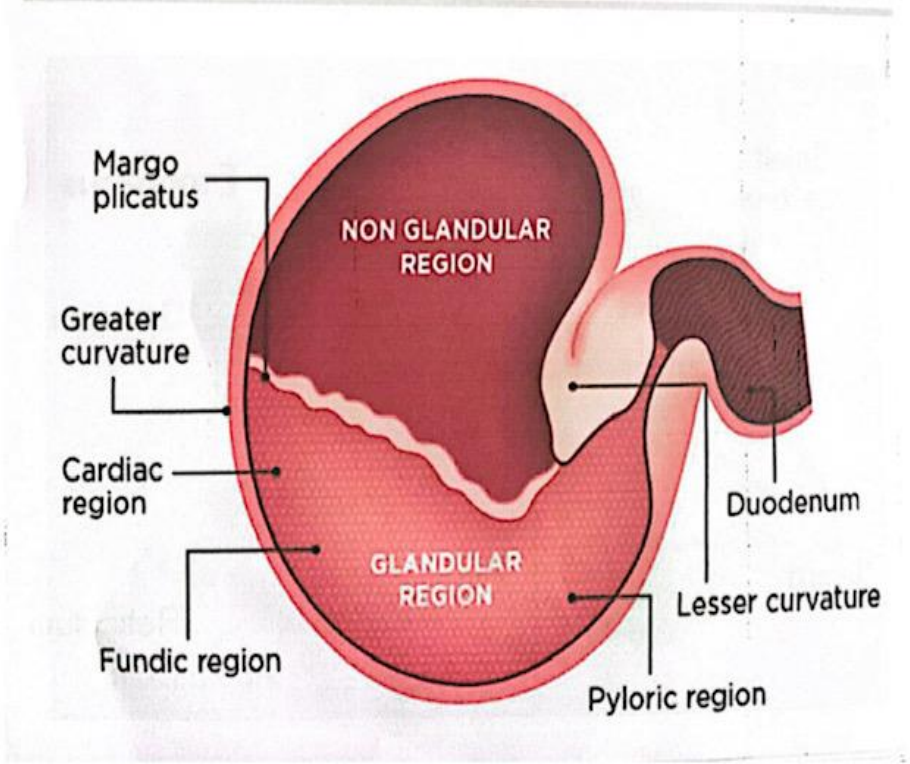


Simple stomach composite of:

- cardia
- fundus
- body
- pylorus



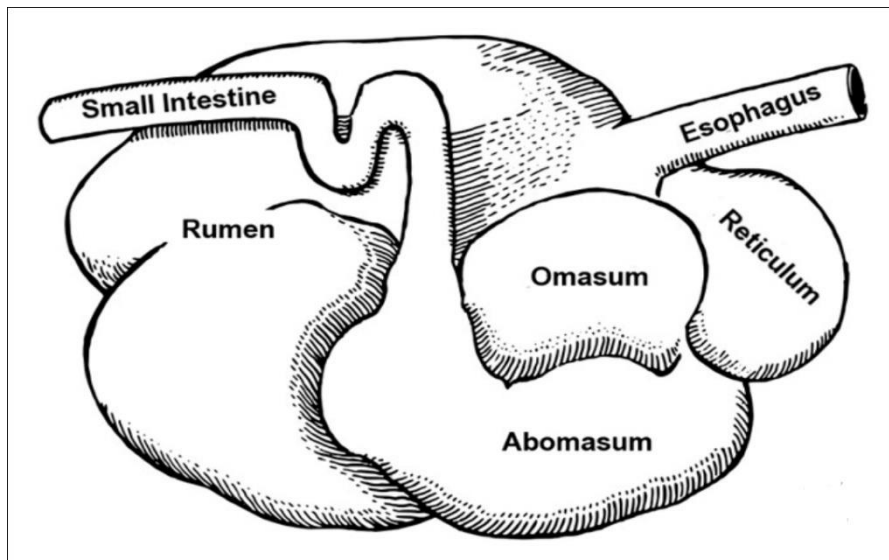
- Non glandular region
- Glandular region
- Margo plicatus
- Greater curvature
- Lesser curvature
- Cardiac region
- Fundic region
- Pyloric region



The stomach of ruminants

** It is composed of four chambers : rumen , reticulum , omasum, abomasum .

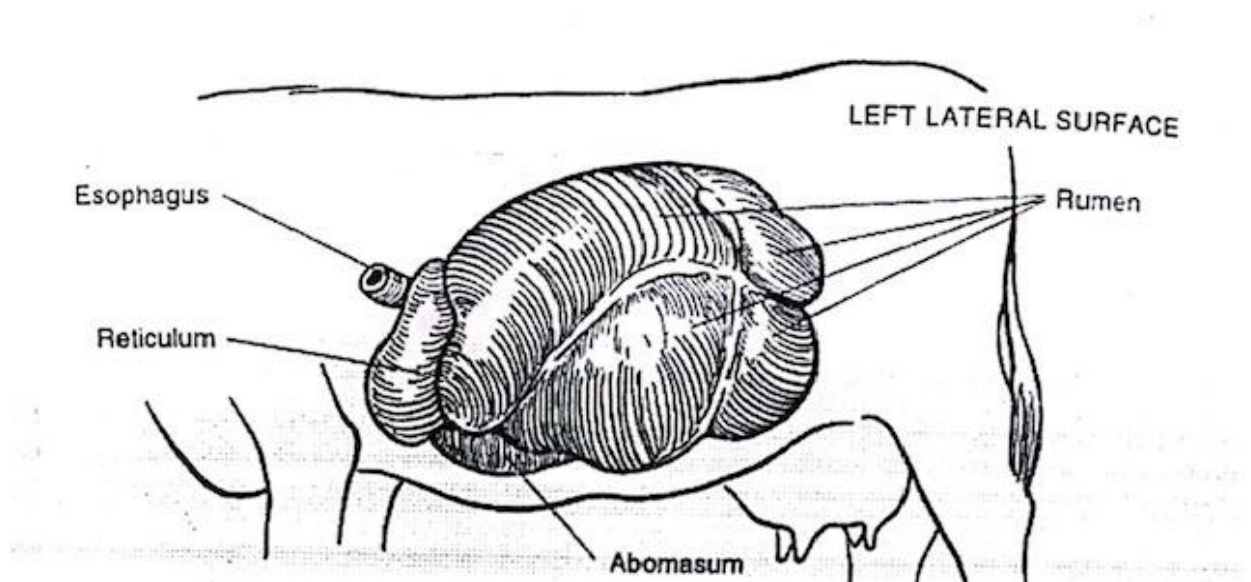
** The first three known as the forestomach , the last chamber is comparable in structure and function to the simple stomach



The rumen and reticulum

*The Rumen extend from cardia to the pelvic inlet , and from the abdominal roof to the floor , and form the left body wall across the midline specially caudally and ventrally where it may reach the lower right flank .

** The Reticulum lies cranial to the rumen and mainly to the left of the median plane , and it lies above the xiphoid process of the sternum . *** The rumen and reticulum communicate over the ruminoreticular fold.



The interior surface of the rumen forms numerous papillae that vary in shape and size from short and pointed to long and foliate.



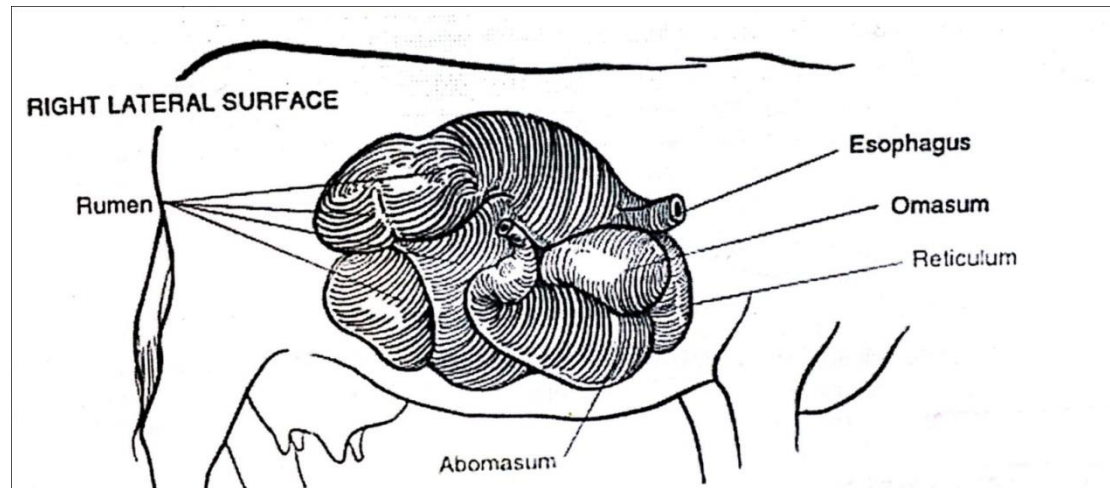
Reticular epithelium is thrown into folds that form polygonal cells that give it a reticular, honey-combed appearance. Numerous small papillae stud the interior floors of these cells.



The omasum

-It lies within the intra thoracic part of the abdomen to the right of the midline and between the rumen and reticulum to the left , and the liver and body wall to the right .

- It is bilaterally flattened and displays along convex border -
Most of it lies under cover of ribs 8-11 .



The omasum

- The anterior is occupied by about 100 crescentic laminae that arise from the sides and greater curvature and projects towards the lesser curvature where there is a more open passage (the omasul canal)

- The reticulo - omasul orifice is situated at the upper end of the short cannal - In sheep and goats : The omasum is relatively smaller.



Abomasum

It lies flexed upon the abdominal floor embracing the lower pole of omasum from behind . - It is divided by analogy with the simple stomach into fundus and body . The abomasum is lined by a pink slime - covered , glandular mucosa which is in striking contrast to the harsh lining of the fore stomach .

