

Ruminant stomach

It is consist of : rumen , reticulum , omasum , abomasum .

Rumen :

Parietal and visceral surface

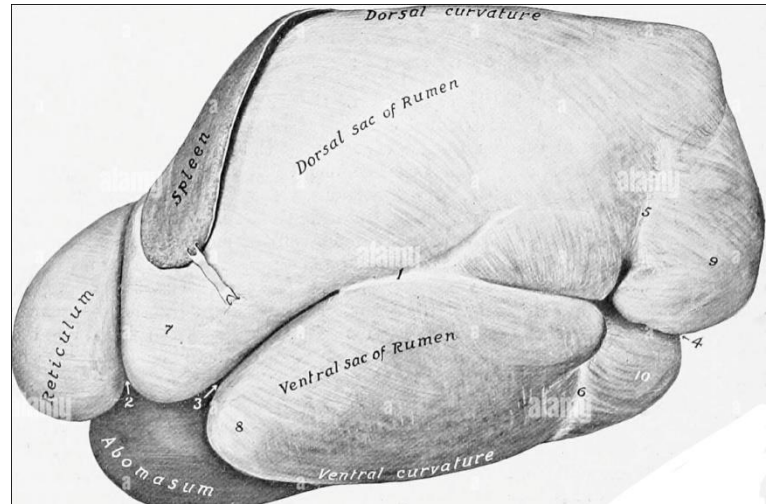
Dorsal and ventral curvature

Cranial / reticular extremity

Caudal / pelvic extremity

Dorsal and ventral sacs

Rumen island (insula)



Rumenal grooves:

1. Cranial transverse groove. 2. Caudal transverse groove. 3. Right longitudinal groove. 4. Left longitudinal groove. 5. Accessory groove. 6. Right dorsal coronary groove. 7. Left dorsal coronary groove. 8. Right ventral coronary groove. 9. Left ventral coronary groove.

Rumenal pillars:

located opposite to the external grooves and have the same names.

Openings of rumen :

Esophago- rumenal orifice (cardiac)

Rumeno- reticular orifice

Reticulum :

Parietal and visceral surface

Greater and lesser curvature

Right extremity

Openings of reticulum :

Reticulo –rumenal orifice

Reticulo –omasal orifice

Omasum :

Parietal and visceral surface

Greater and lesser curvature

Openings of omasum :

Omaso- reticular orifice

Omaso –abomasal orifice

Abomasum :

Fundus

Body

Pyloric / torus pylorus

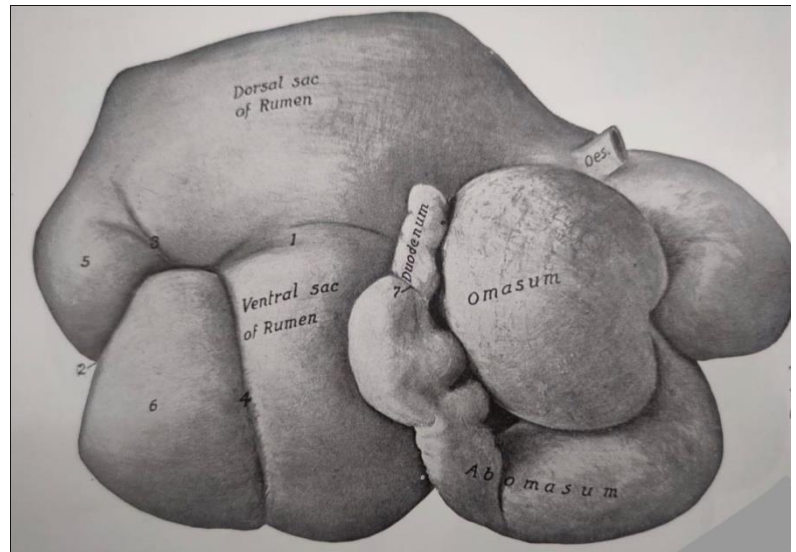
Parietal and visceral surface

Greater and lesser curvature

Openings of abomasum :

Abomaso-omasal orifice

Pyloric orifice



Small intestine :

Duodenum: U- shape, fixed part with mesoduodenum ,
descending and ascending duodenum

Cranial flexure, caudal flexure, duodenojejunal flexure.

Jejunum: longest part, non fixed, with mesentery

Ileum : short straight part, non fixed with mesentery , have fold
connect with cecum (ileocecal fold)

Large intestine :

Cecum:

Dog/ spiral shape, have common orifice (ileocecocolic orifice)

Cattle/cylindrical shape, have common orifice (ileocecocolic
orifice)

Horse/ coma shape, have two orifice (ileocecal and cecocolic
orifice)

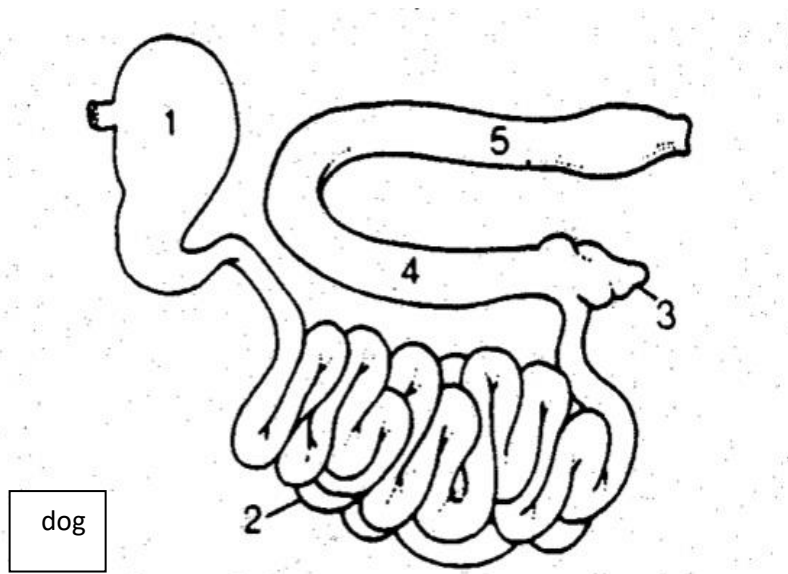
Colon

Dog/ Ascending ,transverse, descending colon .

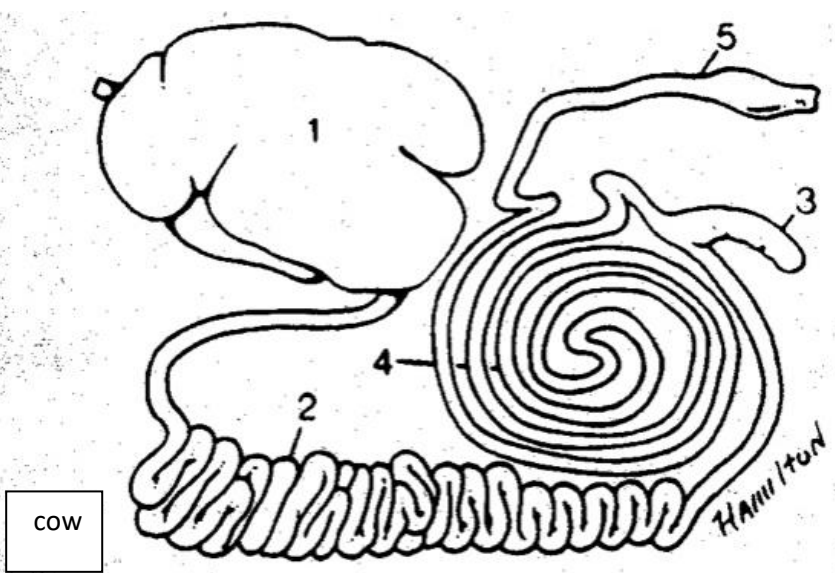
Cattle/Ascending(2 loops and 3 flexure), transverse, descending
colon.

Horse/ Ascending (4 part and 3 flexure), transverse, descending
colon.

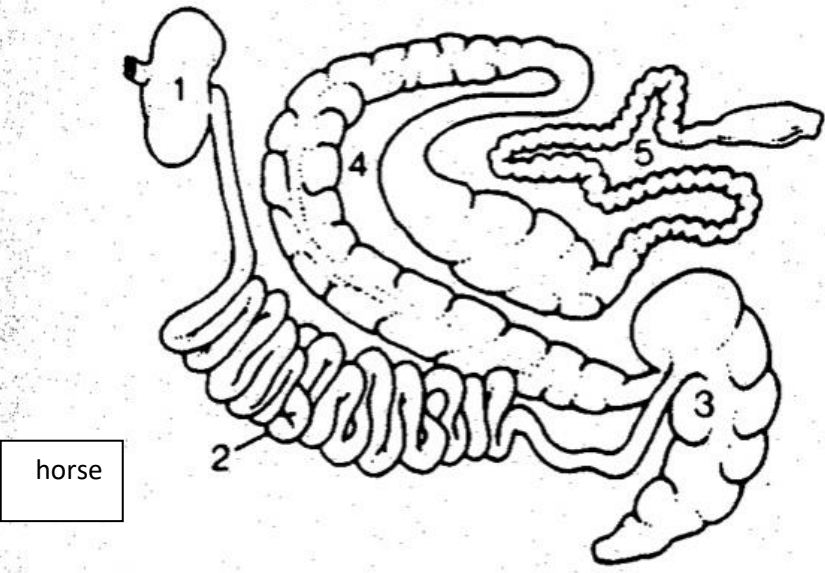
Rectum: straight anal canal ends with anus .



dog



cow



horse