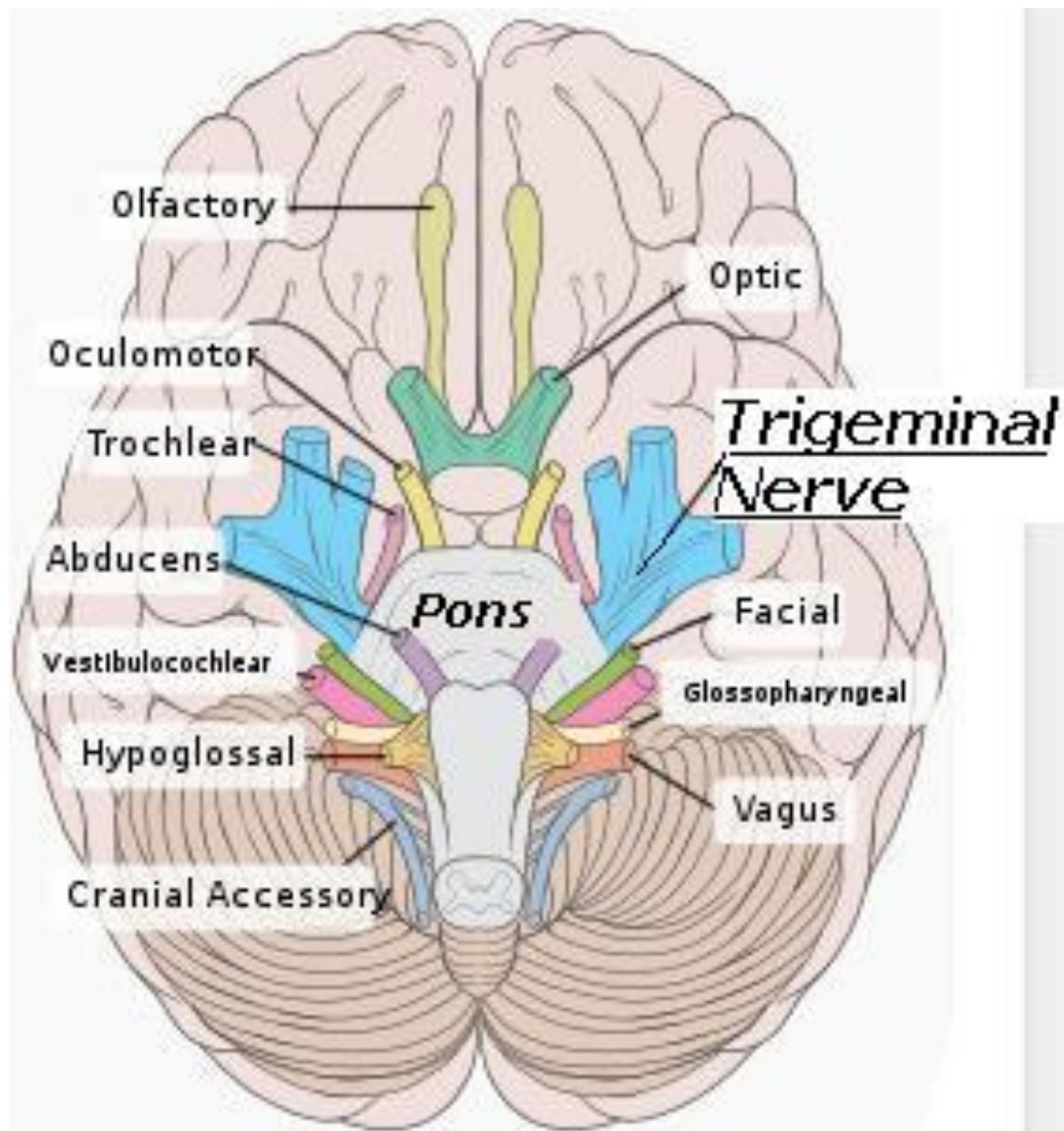
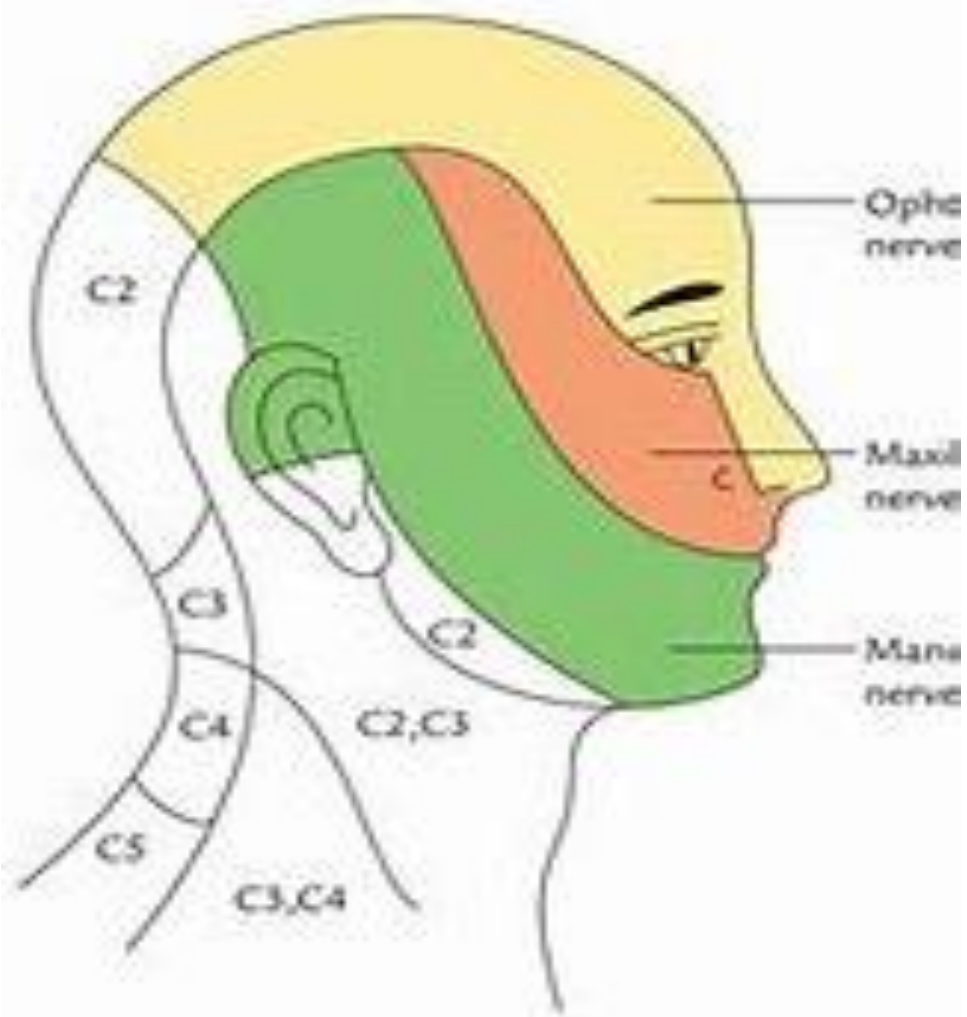


Trigeminal Nerve

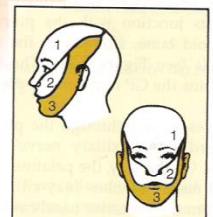
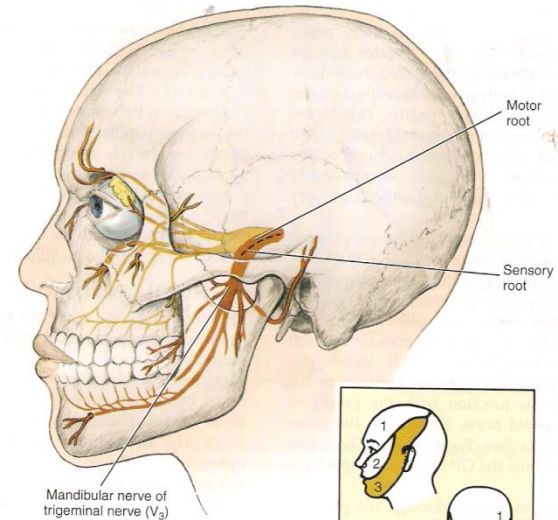
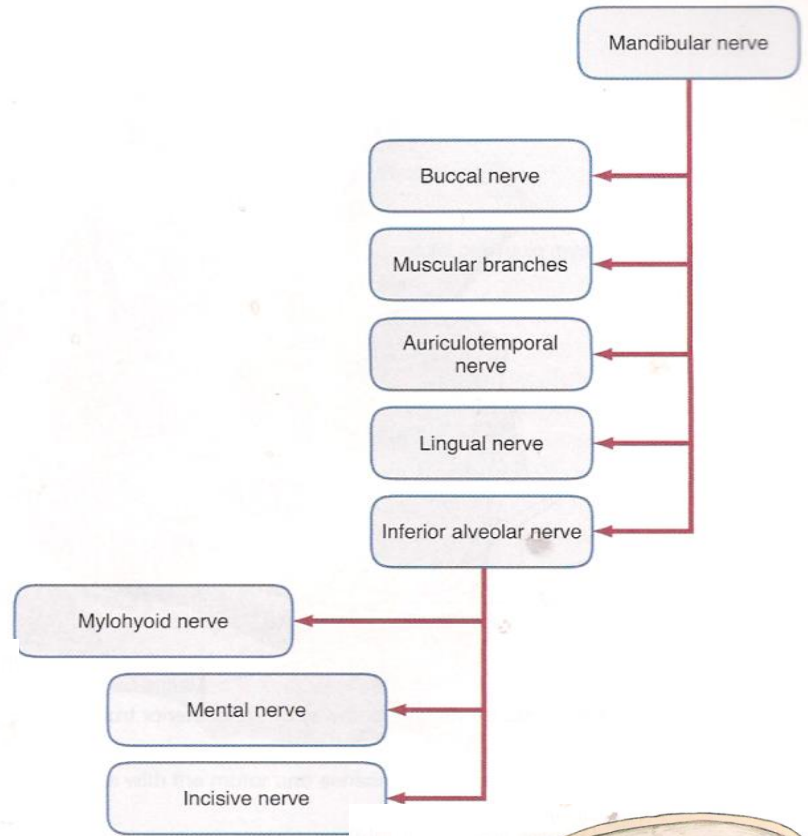
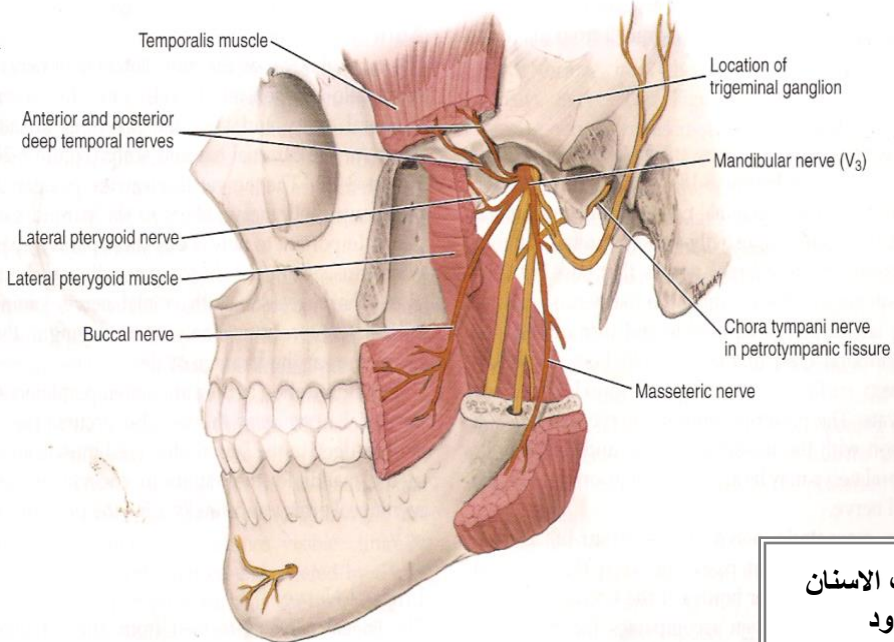
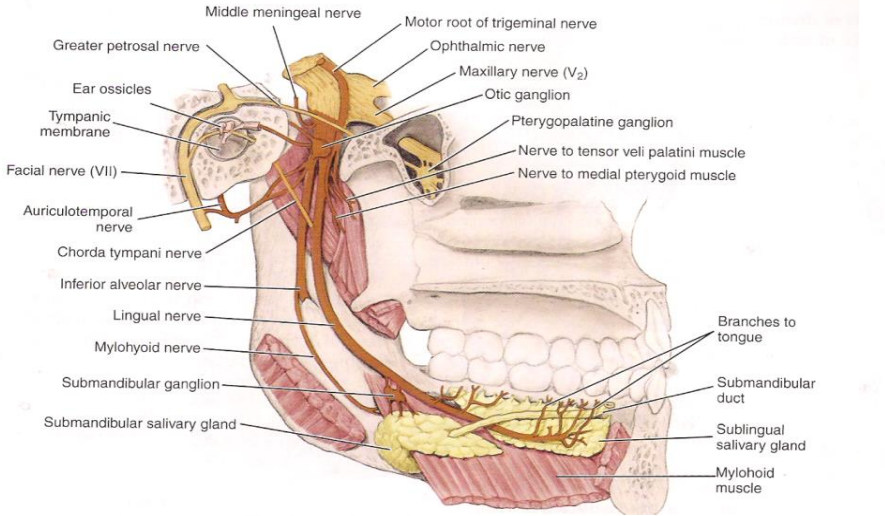
Dr. Sundus Aljazaeri



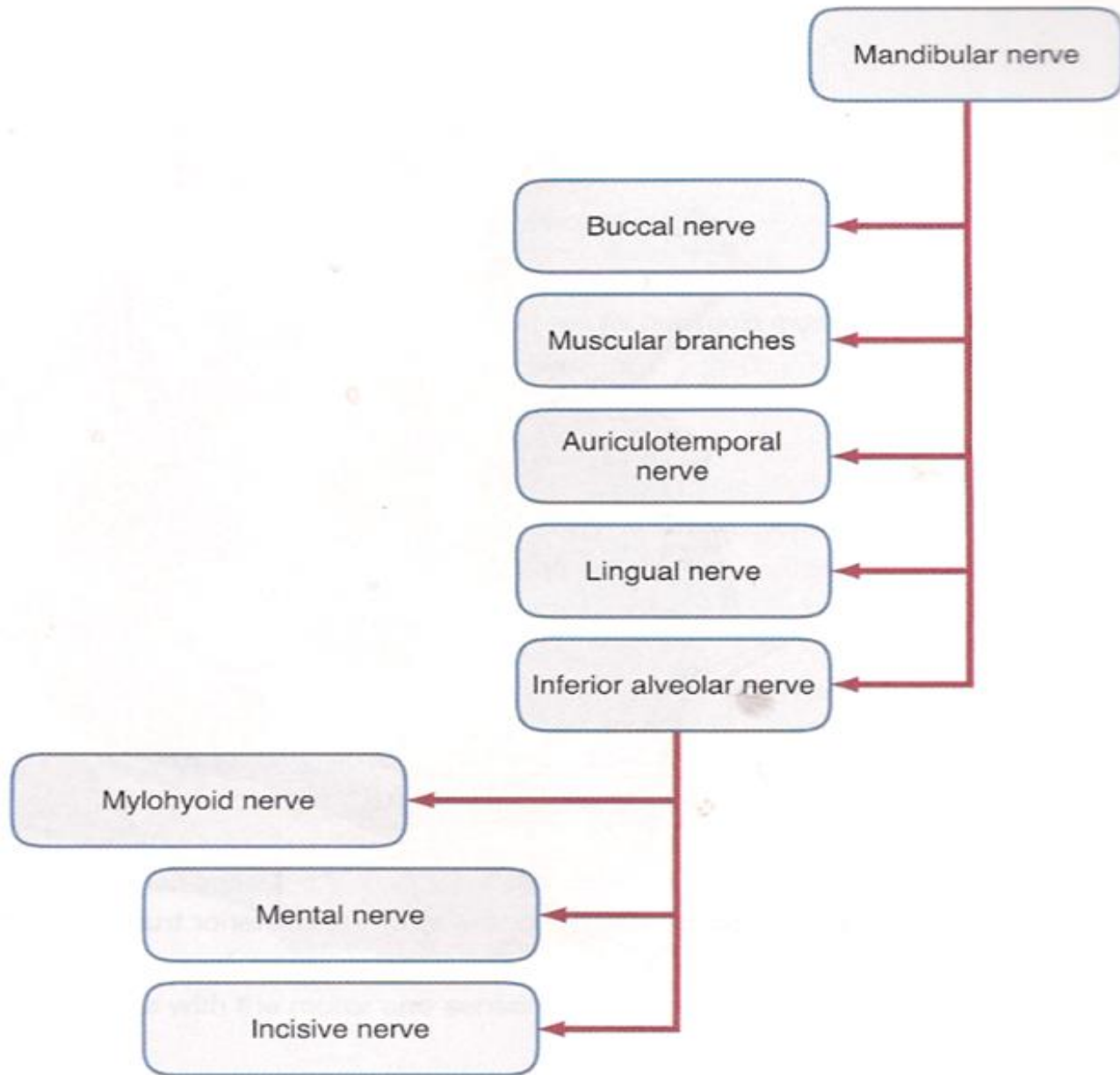
Interior view of the human brain, with the cranial nerves labelled

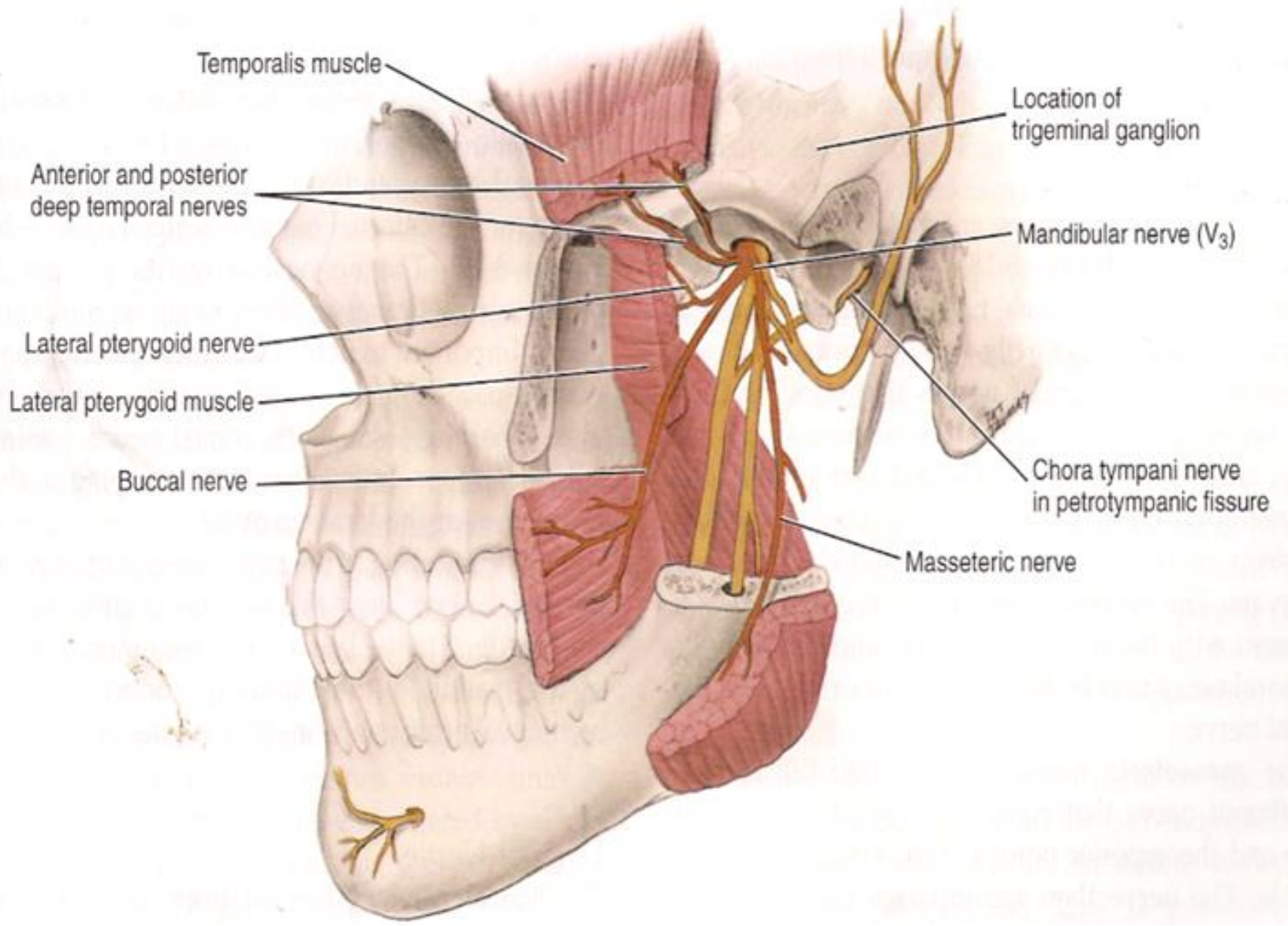


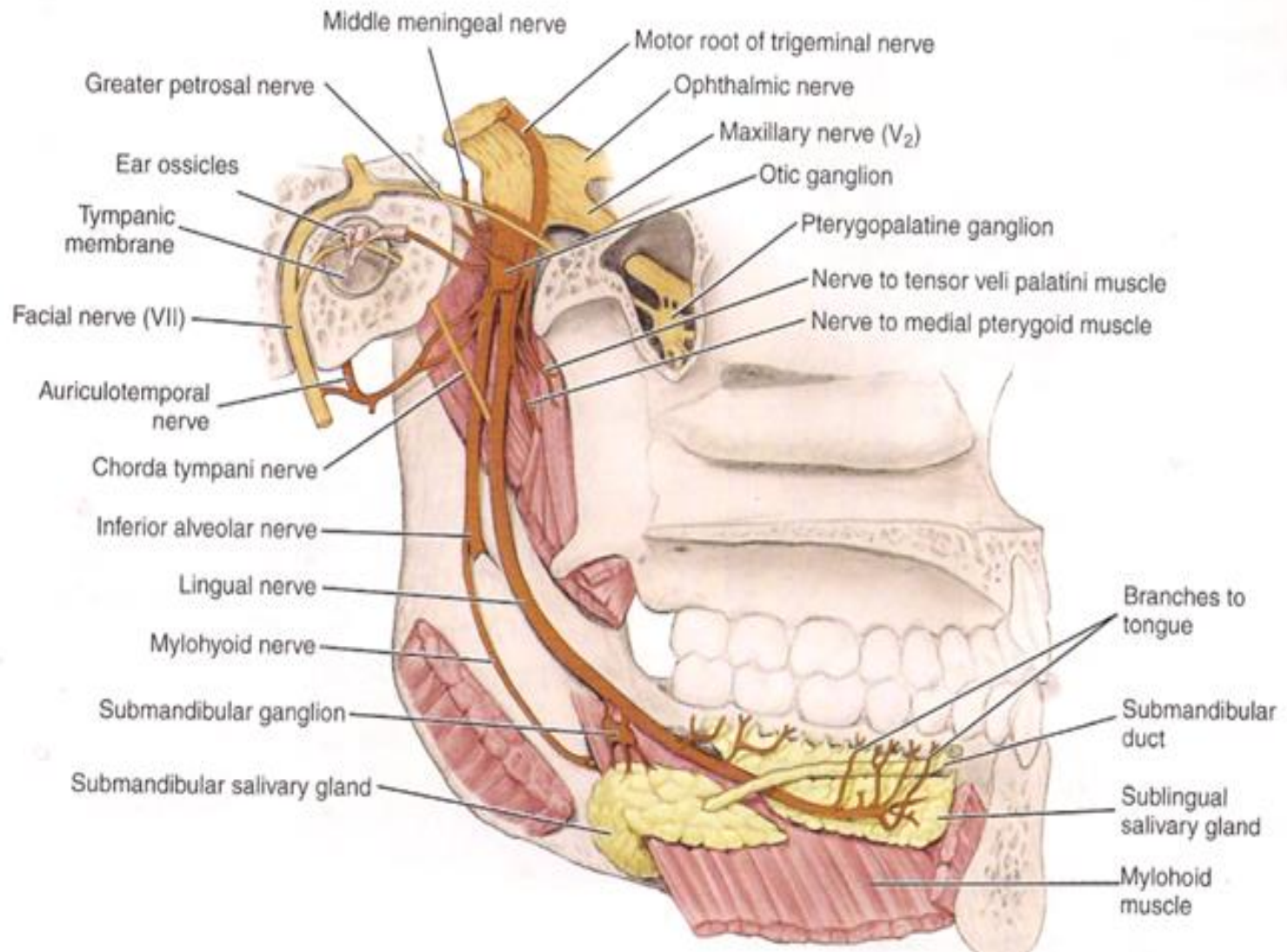
Trigeminal Nerve Mandibular Division (V3)



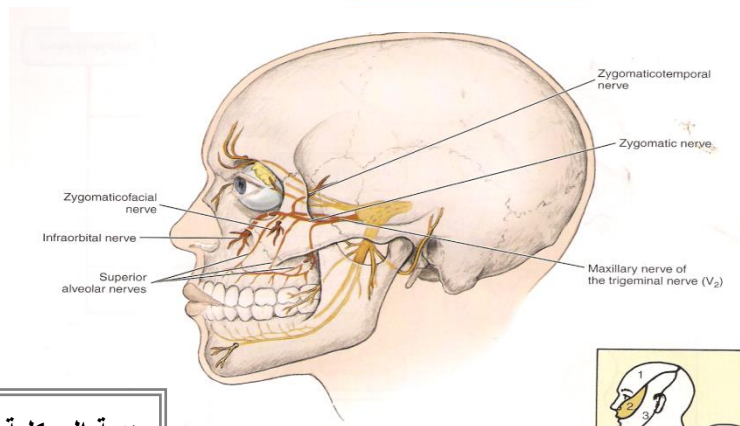
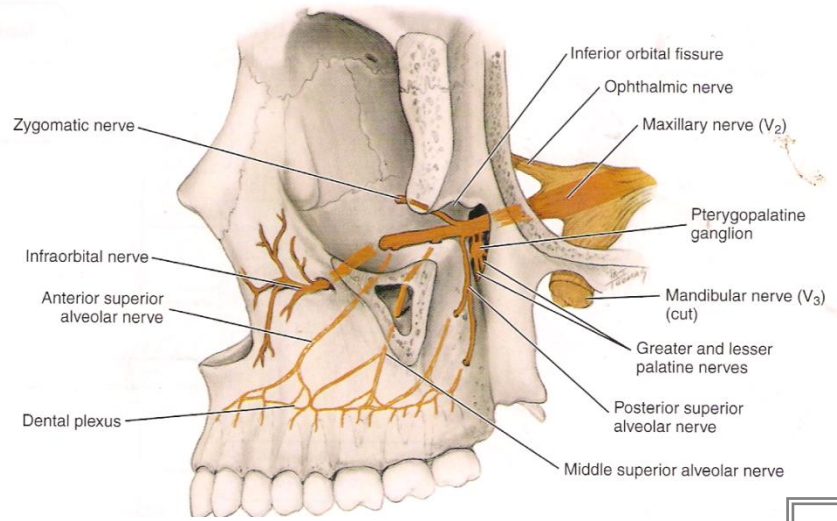
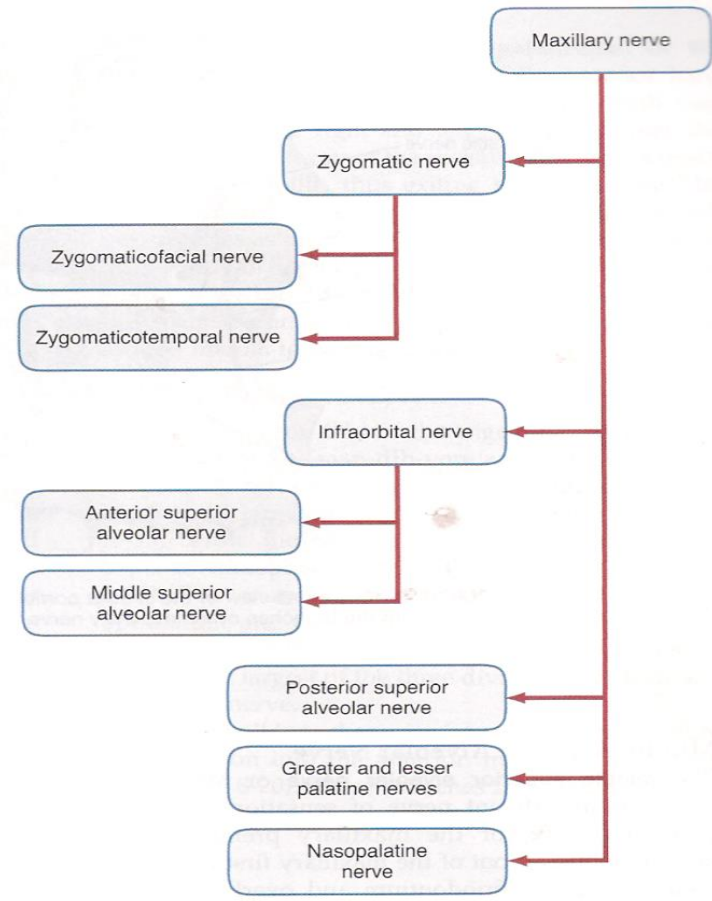
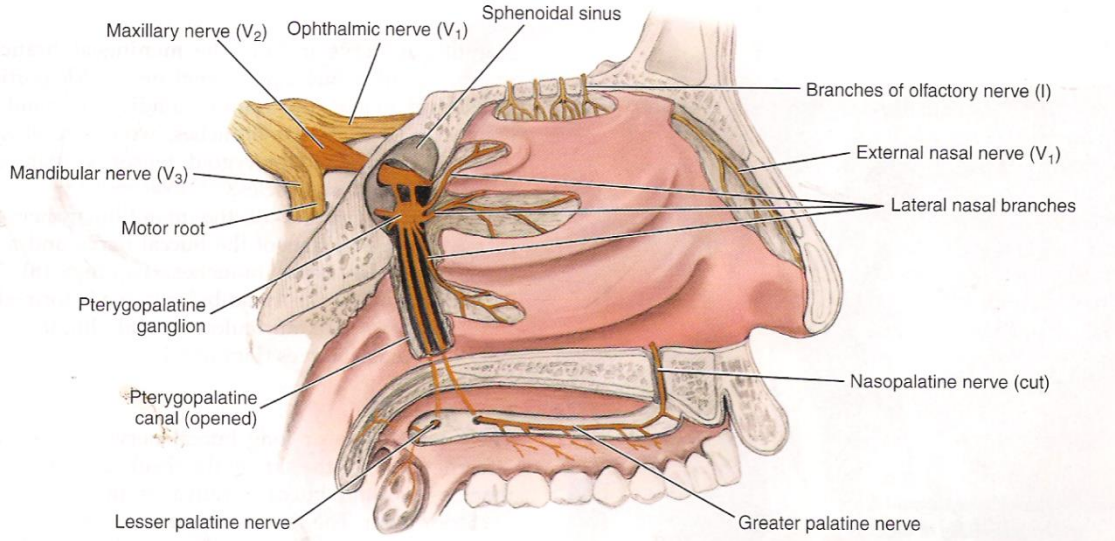
هدية الى كلية طب الاسنان
د.سندس عبد الودود



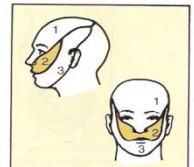


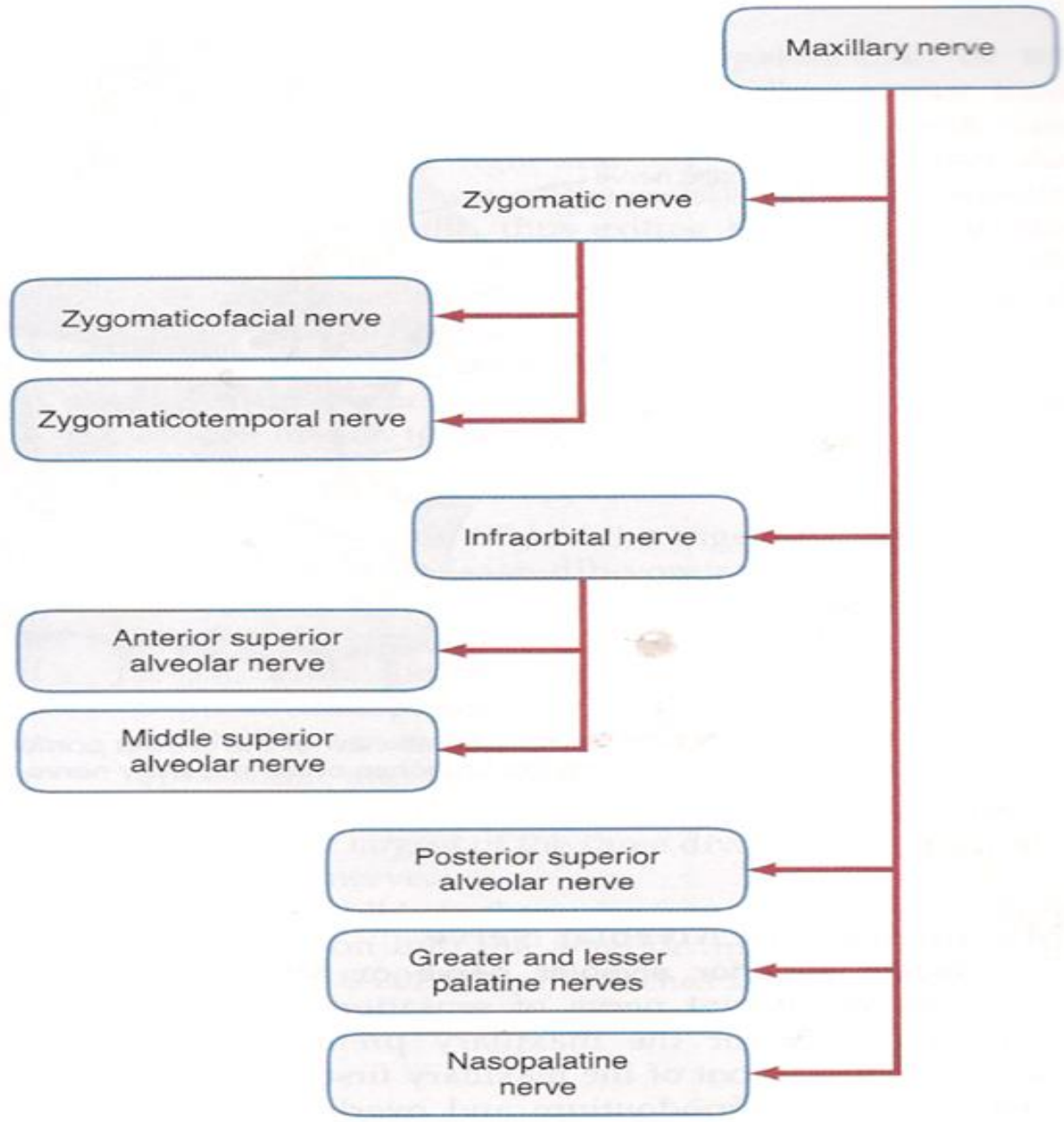


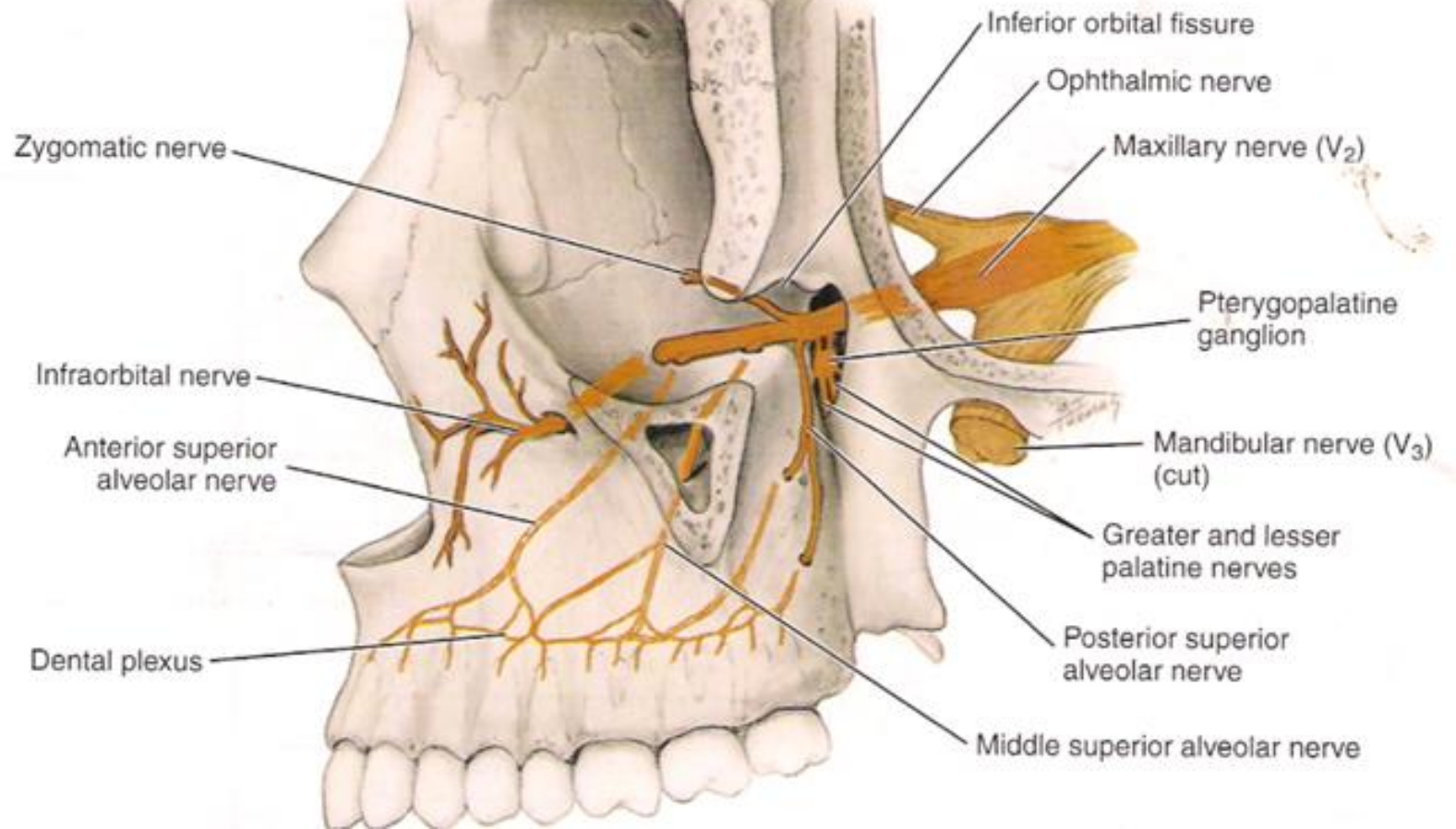
Trigeminal Nerve Maxillary Division (V2)

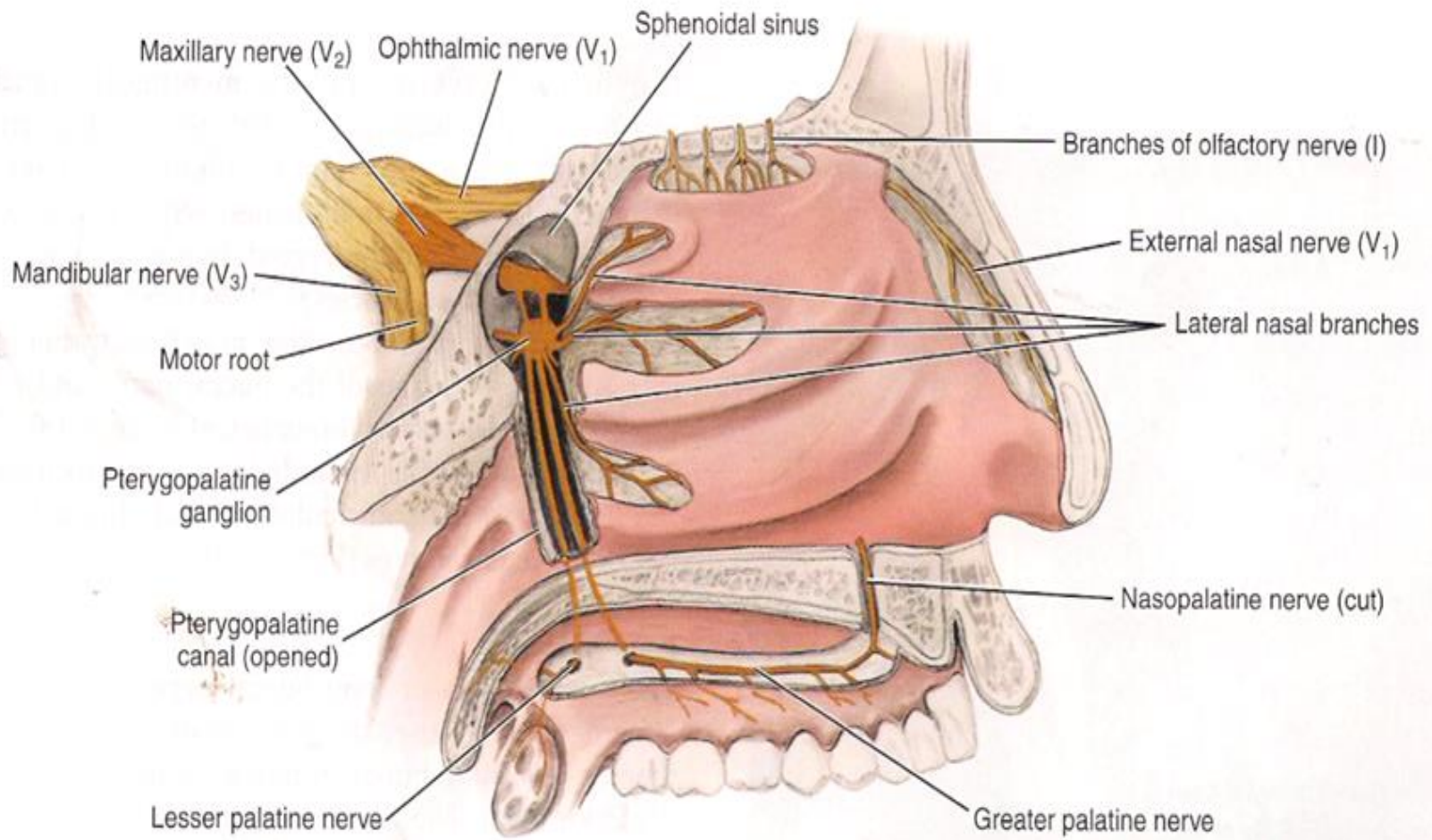


هدية الى كلية طب الاسنان
د. سندس عبد الودود

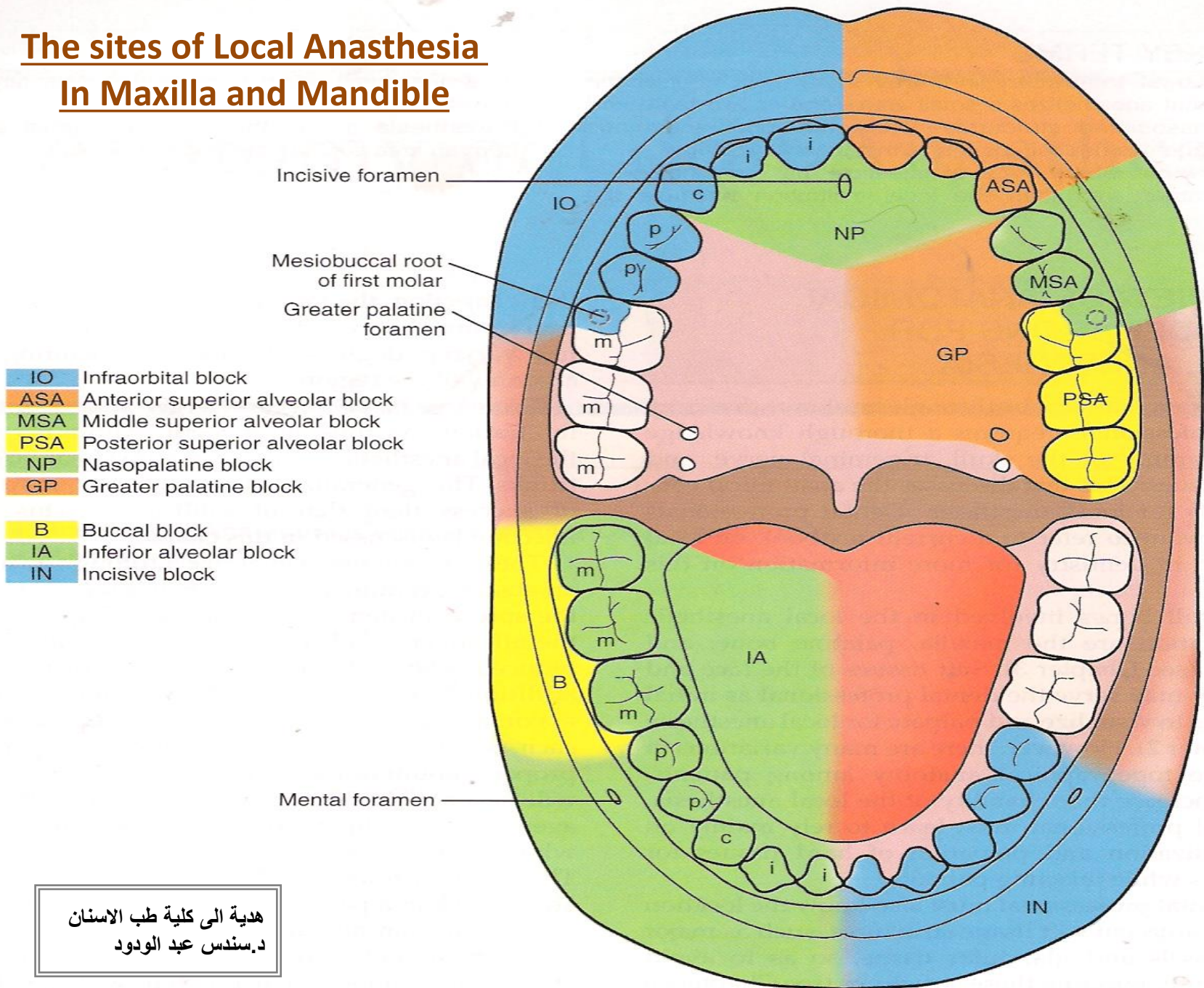








The sites of Local Anesthesia In Maxilla and Mandible



- IO Infraorbital block
- ASA Anterior superior alveolar block
- MSA Middle superior alveolar block
- PSA Posterior superior alveolar block
- NP Nasopalatine block
- GP Greater palatine block
- B Buccal block
- IA Inferior alveolar block
- IN Incisive block

هدية الى كلية طب الاسنان
د. سندس عبد الودود

