

Geoprocessing tool that extracts the cells of a raster corresponding to the area defined by a mask.



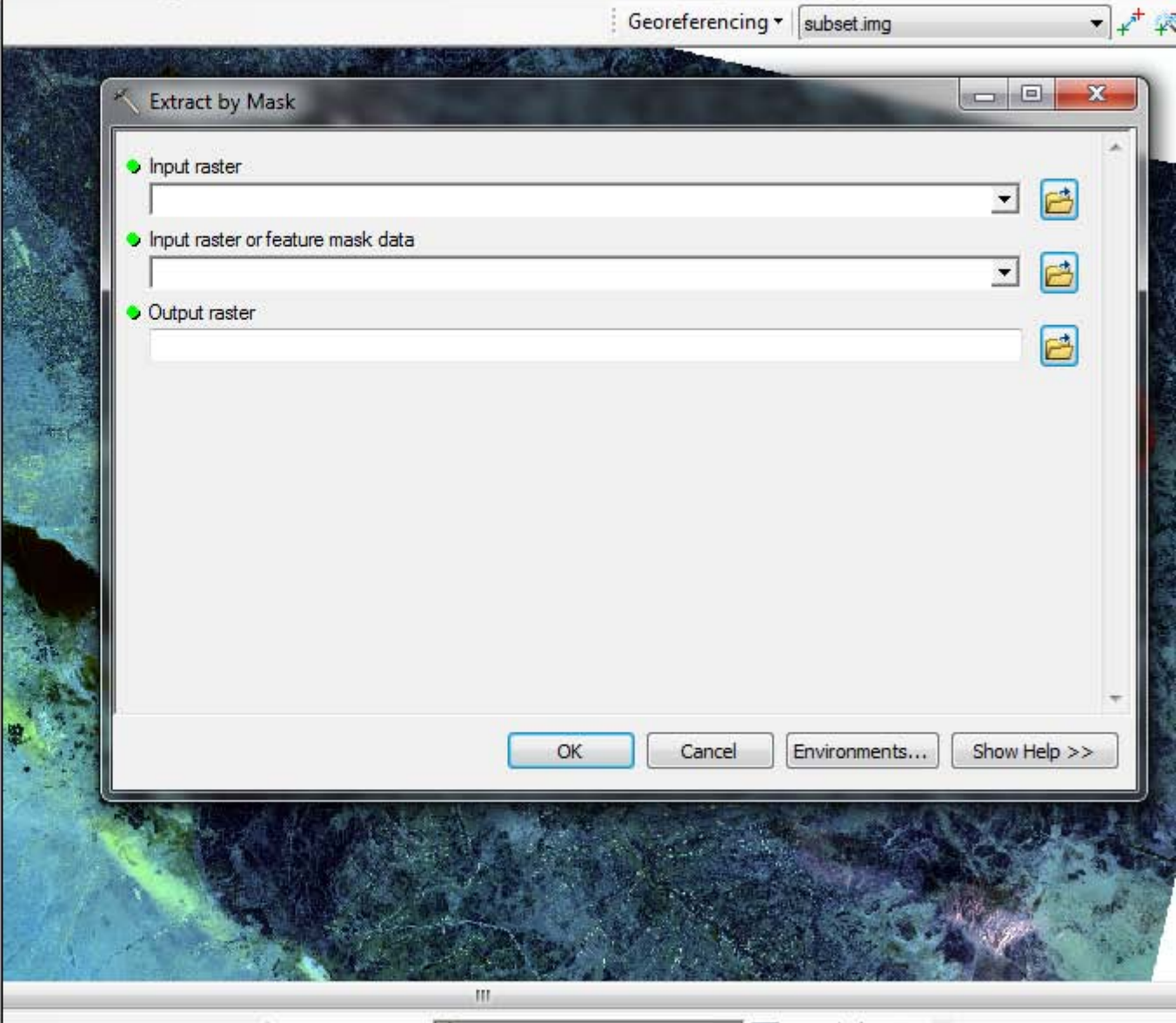


Table Of Contents

- Layers
  - D:\STUDY AREA
    - Area
  - D:\Project\Band Comp
    - subset.img
      - RGB
        - Red: Layer\_1
        - Green: Layer\_2
        - Blue: Layer\_3

ArcToolbox

- Geocoding Tools
- Geostatistical Analyst Tools
- Linear Referencing Tools
- Multidimension Tools
- Network Analyst Tools
- Parcel Fabric Tools
- Schematics Tools
- Server Tools
- Space Time Pattern Mining Tools
- Spatial Analyst Tools
  - Conditional
  - Density
  - Distance
  - Extraction
    - Extract by Attributes
    - Extract by Circle
    - Extract by Mask
    - Extract by Points
    - Extract by Polygon
    - Extract by Rectangle
    - Extract Multi Values to Points
    - Extract Values to Points
    - Sample
  - Generalization
  - Groundwater
  - Hydrology
  - Interpolation
  - Local
  - Map Algebra
  - Math



Extract by Mask

Input raster

Input raster or feature mask data

Output raster

OK Cancel Environments... Show Help >>

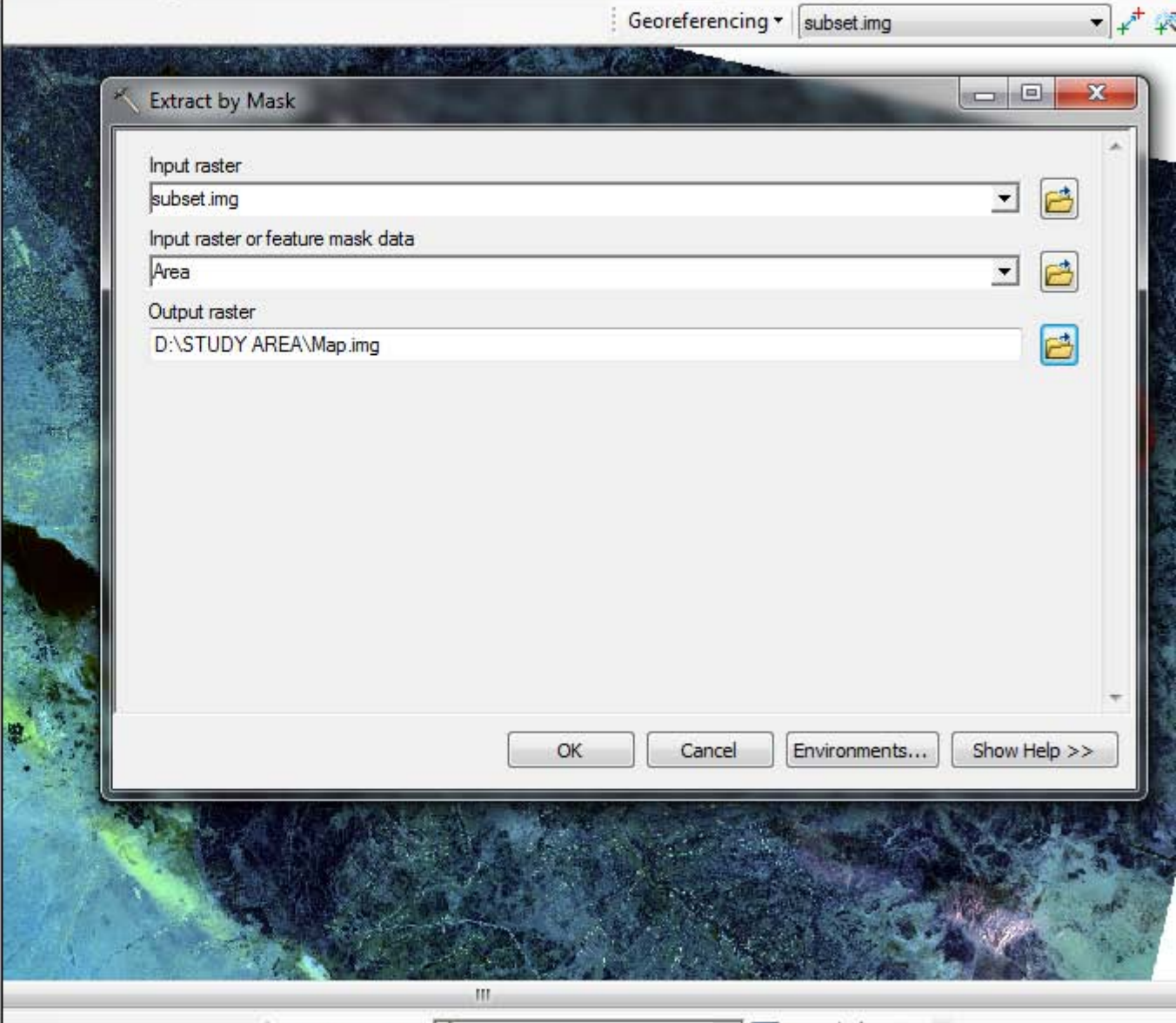
Table Of Contents

Layers

- D:\STUDY AREA
  - Area
- D:\Project\Band Comp
  - subset.img
    - RGB
      - Red: Layer\_1
      - Green: Layer\_2
      - Blue: Layer\_3

ArcToolbox

- Geocoding Tools
- Geostatistical Analyst Tools
- Linear Referencing Tools
- Multidimension Tools
- Network Analyst Tools
- Parcel Fabric Tools
- Schematics Tools
- Server Tools
- Space Time Pattern Mining Tools
- Spatial Analyst Tools
  - Conditional
  - Density
  - Distance
  - Extraction
    - Extract by Attributes
    - Extract by Circle
    - Extract by Mask
    - Extract by Points
    - Extract by Polygon
    - Extract by Rectangle
    - Extract Multi Values to P
    - Extract Values to Points
    - Sample
  - Generalization
  - Groundwater
  - Hydrology
  - Interpolation
  - Local
  - Map Algebra
  - Math



Extract by Mask

Input raster: subset.img

Input raster or feature mask data: Area

Output raster: D:\STUDY AREA\Map.img

OK Cancel Environments... Show Help >>



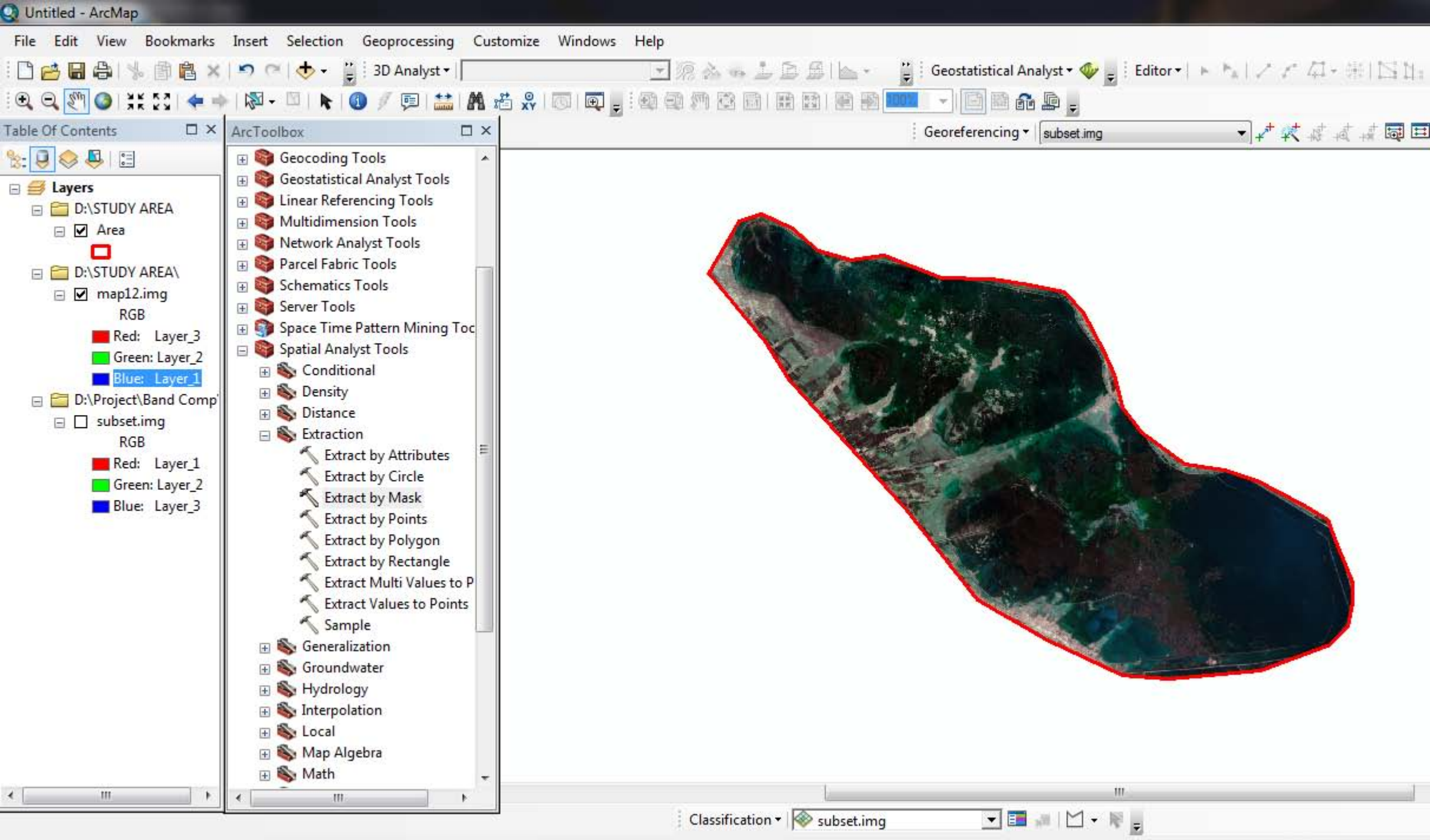




Table Of Contents

**Layers**

- D:\STUDY AREA
  - Area
- D:\STUDY AREA\
  - map12.img
    - RGB
      - Red: Layer\_3
      - Green: Layer\_2
      - Blue: Layer\_1
- D:\Project\Band Comp
  - subset.img
    - RGB
      - Red: Layer\_1
      - Green: Layer\_2
      - Blue: Layer\_3

Georeferencing subset.img

### Select Template

My Templates | **Architectural Page Sizes** | ISO (A) Page Sizes | North American (ANSI) Page Sizes | Tr

- ARCH A Landscape.mxd
- ARCH A Portrait.mxd
- ARCH B Landscape.mxd
- ARCH B Portrait.mxd
- ARCH C Landscape.mxd
- ARCH C Portrait.mxd
- ARCH D Landscape.mxd
- ARCH D Portrait.mxd
- ARCH E Landscape.mxd
- ARCH E Portrait.mxd

Preview

9 in.  
x  
12 in.

C:\Program Files\ArcGIS\Desktop10.4\Map Templates\Standard Page Sizes\Architectur

< Back Finish Cancel

Table Of Contents

- Layers
  - D:\STUDY AREA
    - Area
  - D:\STUDY AREA\
    - map12.img
      - RGB
        - Red: Layer\_3
        - Green: Layer\_2
        - Blue: Layer\_1
  - D:\Project\Band Comp\
    - subset.img
      - RGB
        - Red: Layer\_1
        - Green: Layer\_2
        - Blue: Layer\_3

1 2 3 4 5 6 7 8 9 10 11







Table Of Contents



Layers

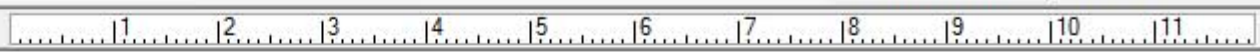
- [-] D:\STUDY AREA
  - [x] Area
- [-] D:\STUDY AREA\
  - [x] map12.img
    - RGB
      - Red: Layer\_3
      - Green: Layer\_2
      - Blue: Layer\_1
- [-] D:\Project\Band Comp
  - [-] subset.img
    - RGB
      - Red: Layer\_1
      - Green: Layer\_2
      - Blue: Layer\_3

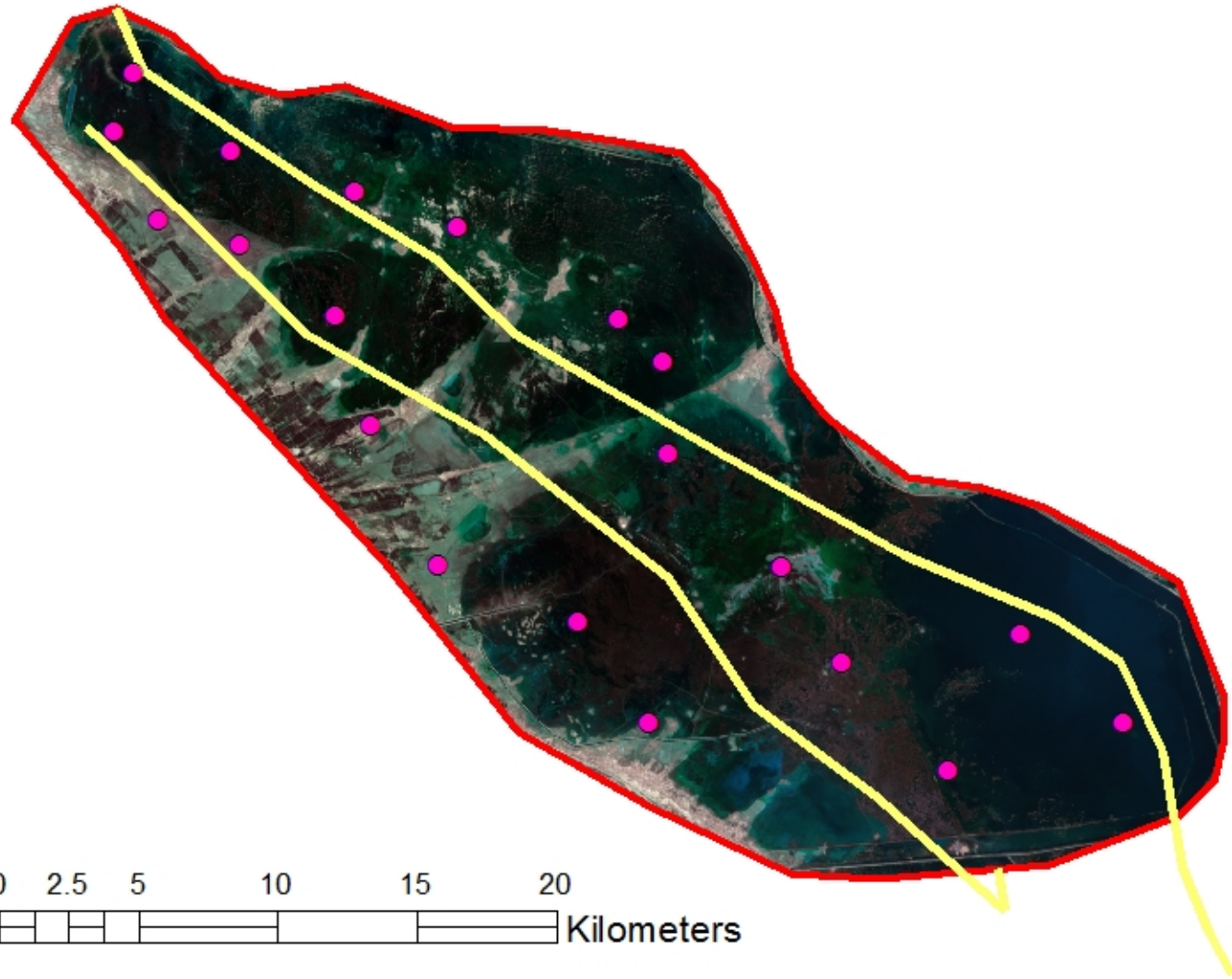
- Data Frame
- Title
- Text
- Dynamic Text
- Neatline...
- Legend...
- North Arrow...
- Scale Bar...
- Scale Text...
- Picture...
- Object...

Analyst | Geostatistical Analyst | Editor



Georeferencing | subset.img





### Legend

● Samples

— Line

□ Area

map12.img

RGB

Red: Layer\_3

Green: Layer\_2

Blue: Layer\_1

0 2.5 5 10 15 20  
Kilometers