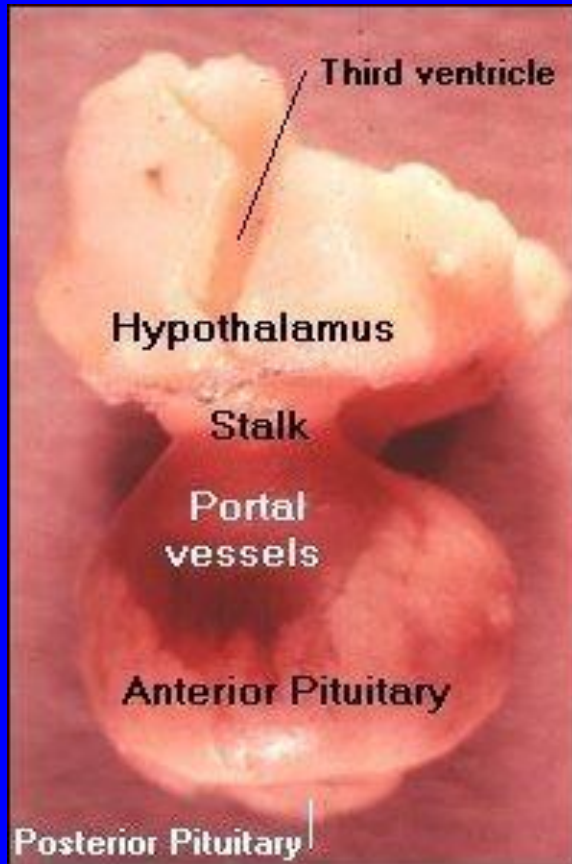


Gonadotropins

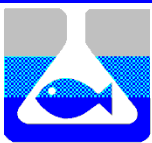


- Simulate or augment GtHs
- Act at level of gonad
- Stimulate ripening and release
- Causes increased steroids and PGs



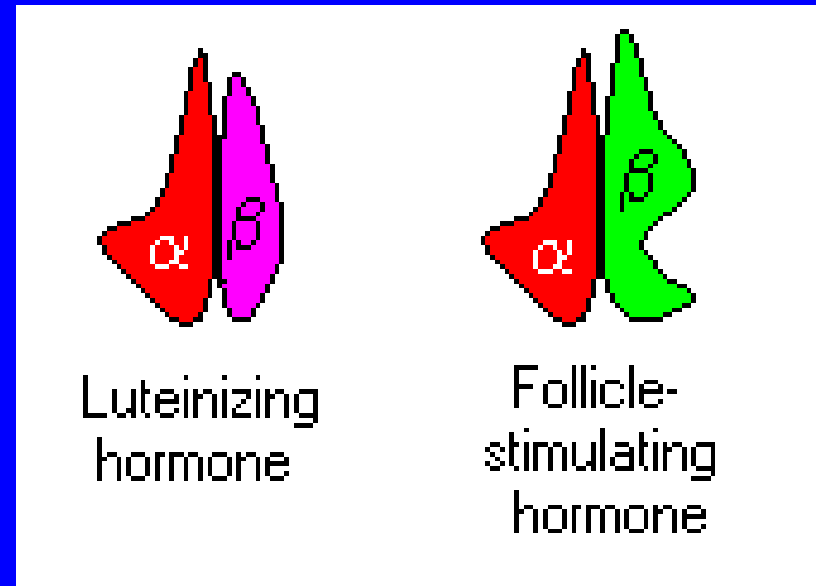
CPE/LSP

- Oldest method
- Usually works
- Not truly reliable
- No dose confirmation
- Quality can vary
- Stability issues
- HCG is human equivalent



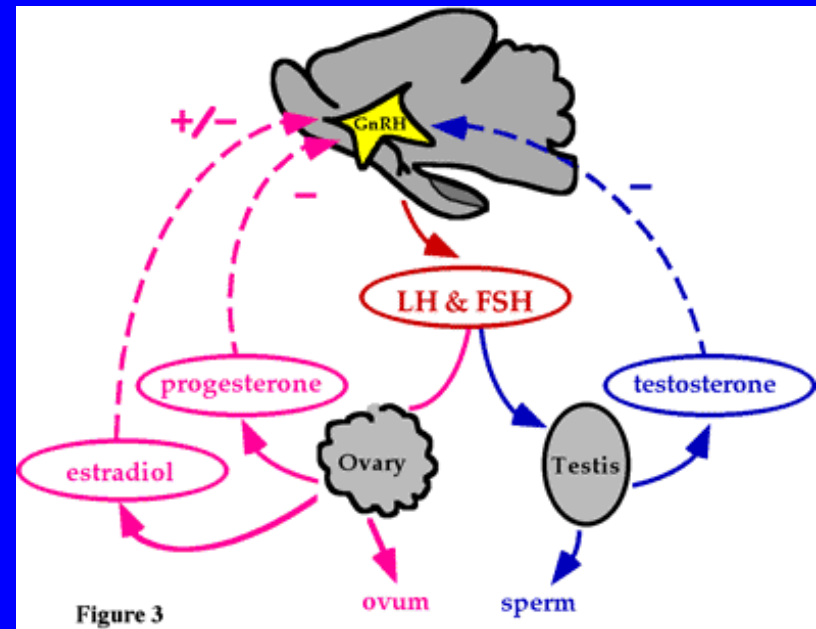
Purity

- Fish GtHs have not been synthesized
- No recombinants to date
- Vary with species
- Large molecules mean stereo-conformity



GnRH

- Small molecule, decapeptide
- 16 known variants
- Central to reproduction
- Top of the cascade
- Robust



Methods: GnRHa



- Many forms: powder, liquid, implant
- Ovaprim is sterile solution with dopamine inhibitor
- Most natural stimulation
- Uses full HPG axis

