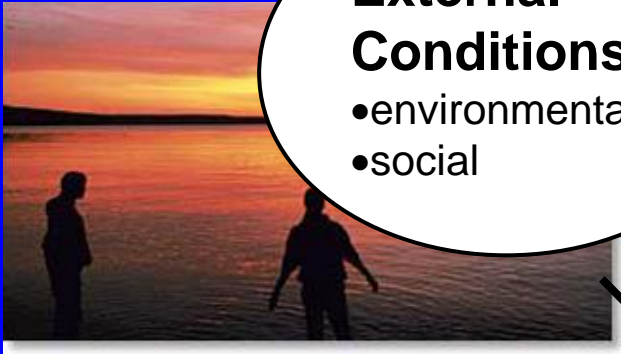


# Genesis of Maturation

**External  
Conditions**  
•environmental  
•social



**Internal  
Conditions**  
•physiology



**Perception  
Integration  
Reaction**



# Environmental Influences

- Temperate climates
  - Photoperiod
  - Temperature
  - Water quality
- Equatorial climates
  - Temperature
  - Rainfall
  - Water quality



# Social Conditions



- Loading density
  - +ve and –ve
  - Sex ratios
- Nesting behaviour
  - Proper materials
  - Colouration
- Pheromones
  - Attraction
  - Cue

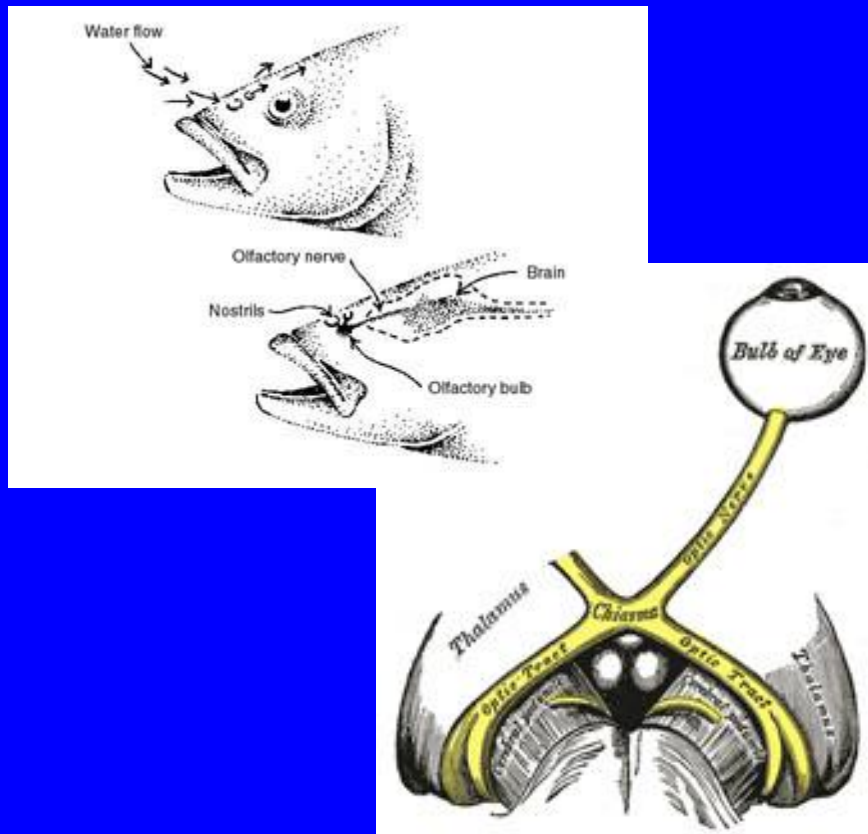


# Internal Conditions

- Physiology
  - Puberty
- Fat content
  - Type and amount
- Nutrition
  - Availability and quality
- Disease
- Size and shape



# Perception



- Changes detected
- Impulse transferred to brain
- Signal pathways inform areas of the brain
- Outside is now an inside thing
- Integration

