

# **Veterinary Parasitology**

**Lab NO:9**

**phylum:platyhelminthes**

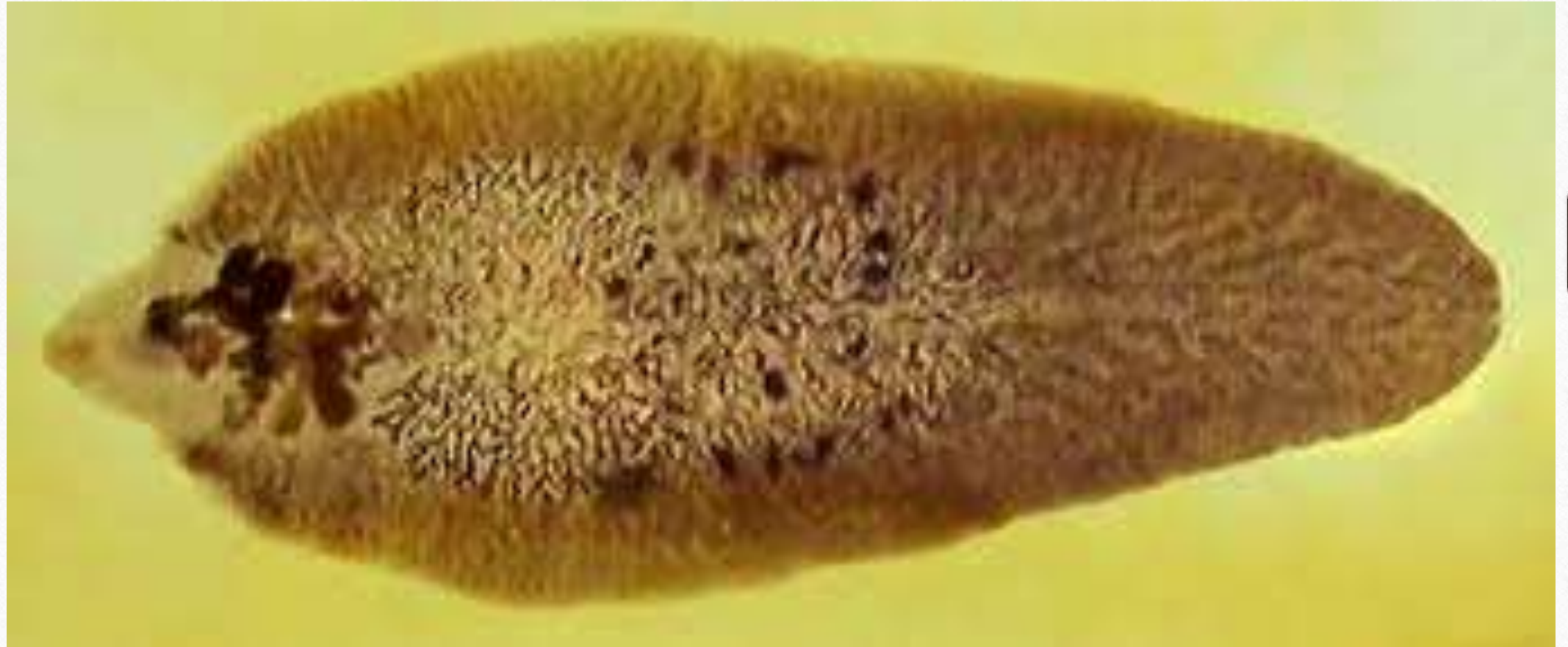
---

**class:Trematoda**

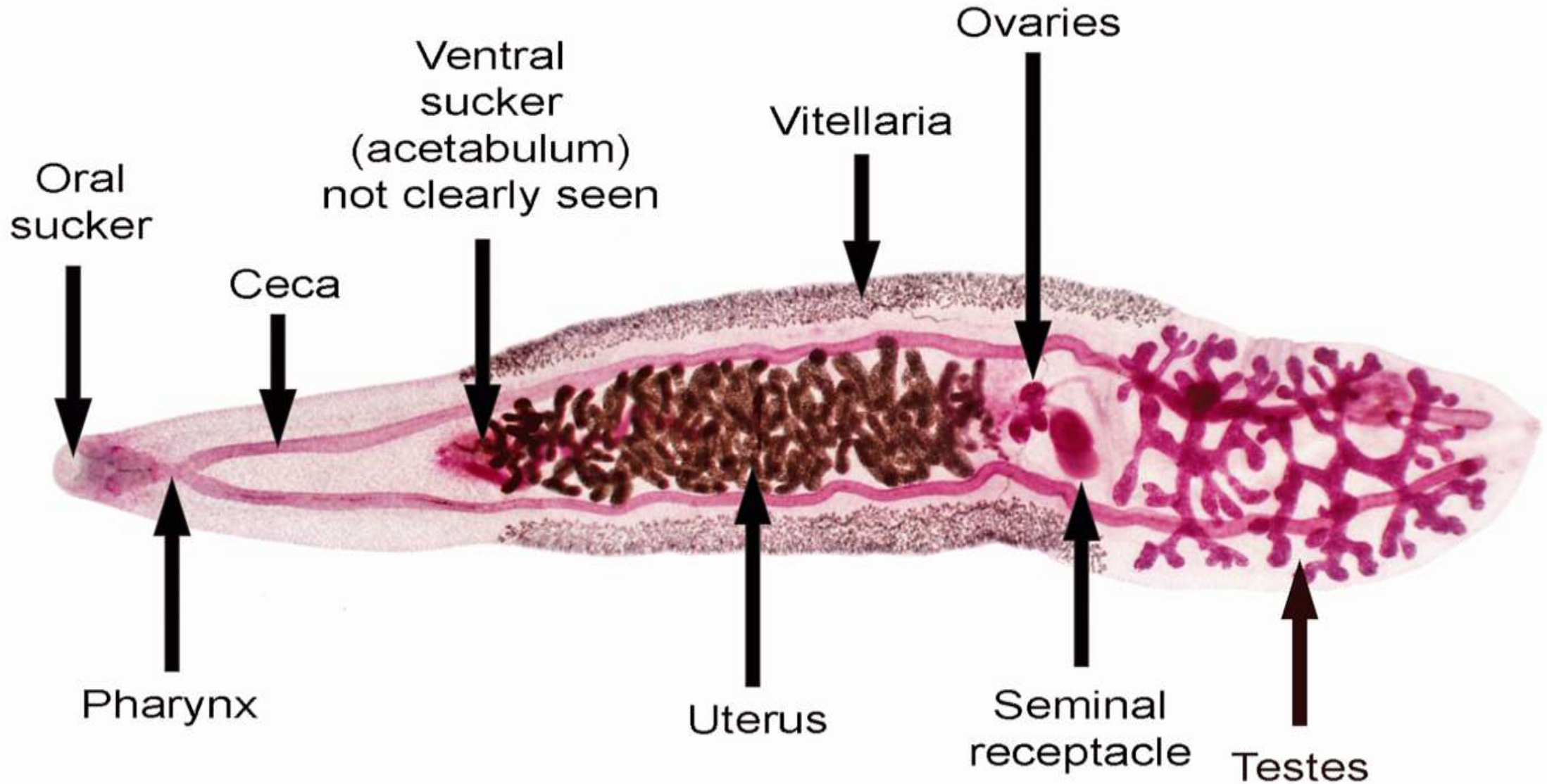
**Prof. Dr. Ghazi Y. Al-Emarah**

**Lecturer. Isra'a Muhsein Esaa**

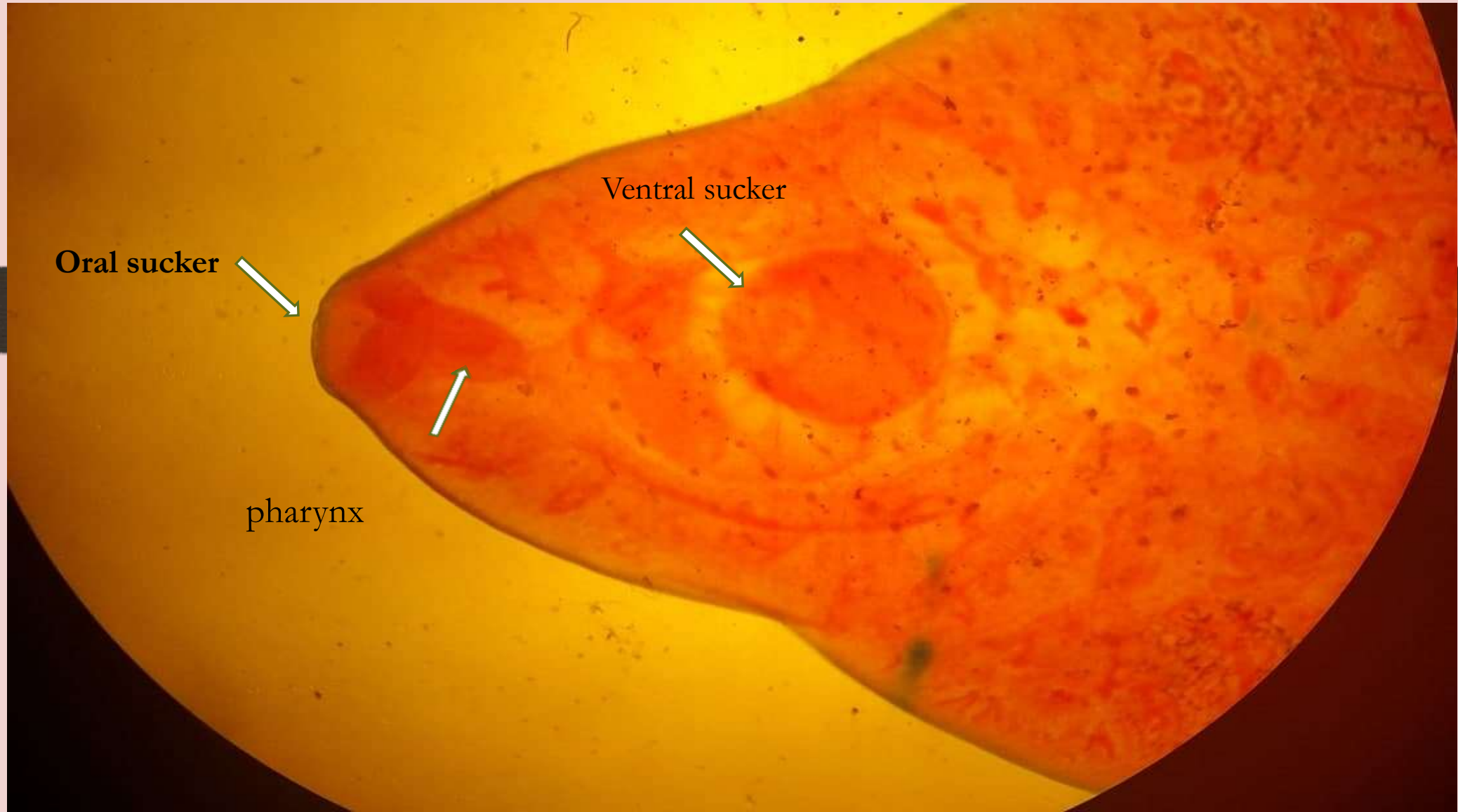
*Fasciola spp.* worm  
(adult)



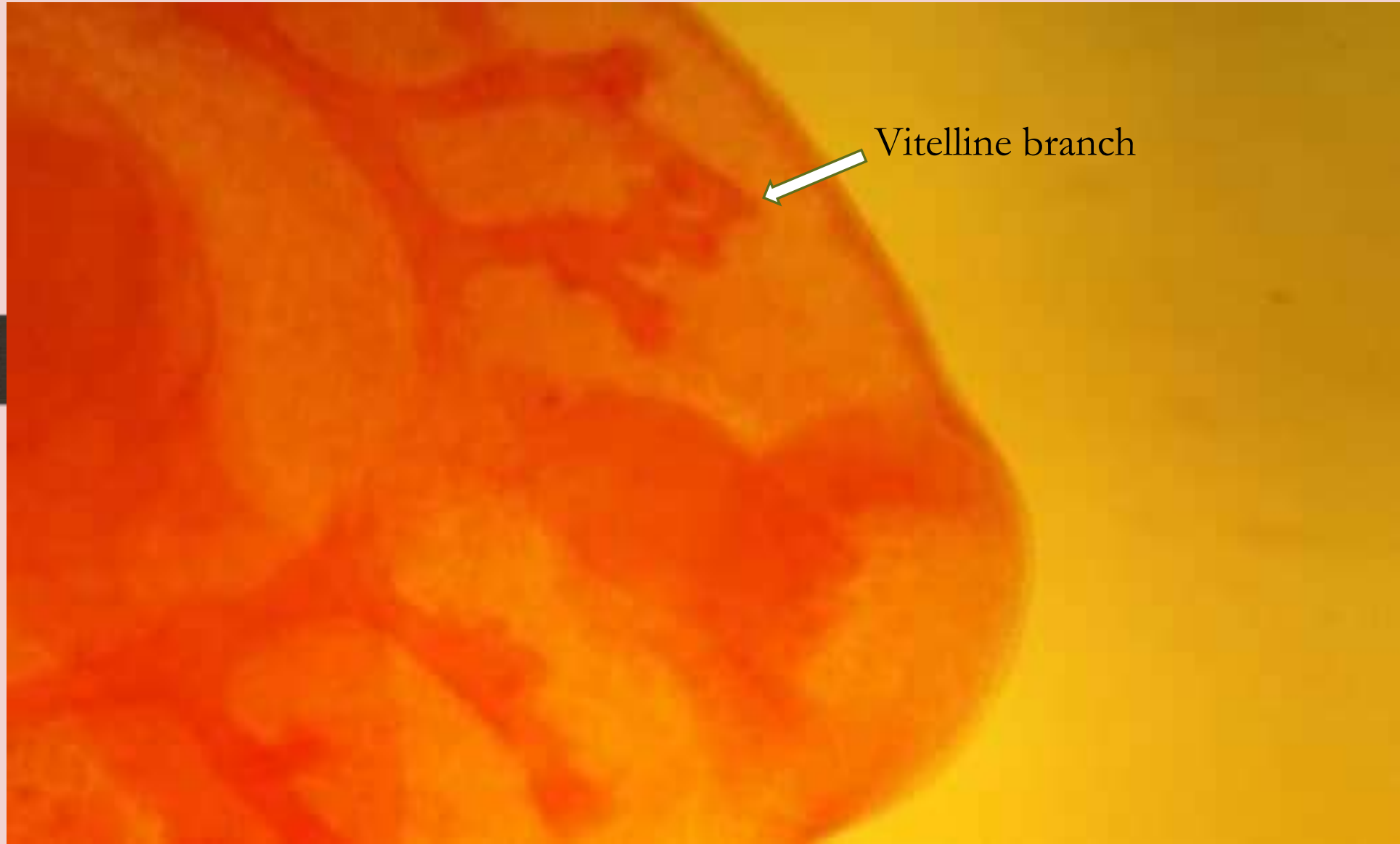
# Trematoda diagram



*Fasciola gigantica* worm  
(adult) Anterior part



*Ascaridia hepatica* worm  
(adult) Posterior part



*Fasciola* spp. Egg or  
Ovum



*Fasciola*

*sp.*

Miracidium



*Fasciola* spp.

rediae





# *Dicrocoelium* spp.

