

Pharynx

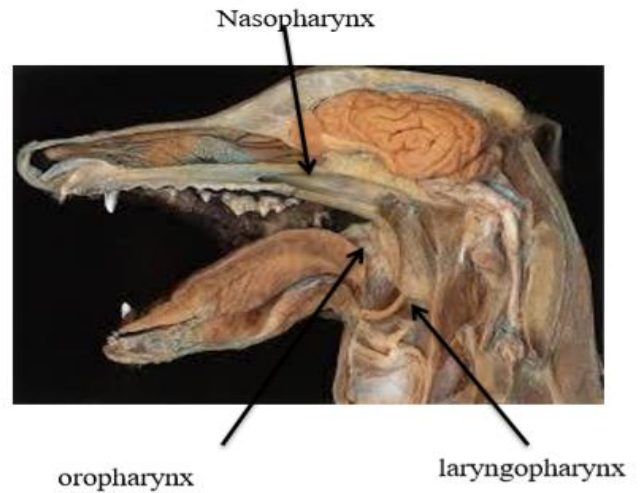
(Muscular membranous sac, funnel in shape).

Divided to the three parts:-

1. Oropharynx.
2. Nasopharynx.
3. Laryngopharynx.

Contain many openings:-

1. Chonae ----- 2
2. Auditory tubes -----2
3. Aditus pharyngis-----1
4. Aditus laryngis -----1
5. Aditus esophagus -----1



Esophagus:

(Muscular membranous tube, divided into the three parts:

1. Cervical part.
2. Thoracic part.
3. Abdominal part

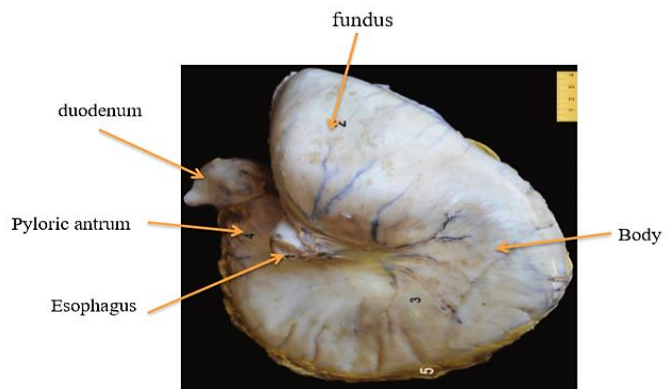
Stomach:

* Simple stomach:

It is a large dilation of alimentary canal located between the esophagus and small intestine in which the digestion of food is initiated.

• External structures:-

1. Parital surface.
2. Visceral surface.
3. Cardiac opening.
4. Pyloric opening.
5. Saccuse cecus -----horse.
6. Lesser curvature.
7. greater curvature.



• Internal structures:

Divided in to the two region:

A- Glandular regions

B- Non glandular region

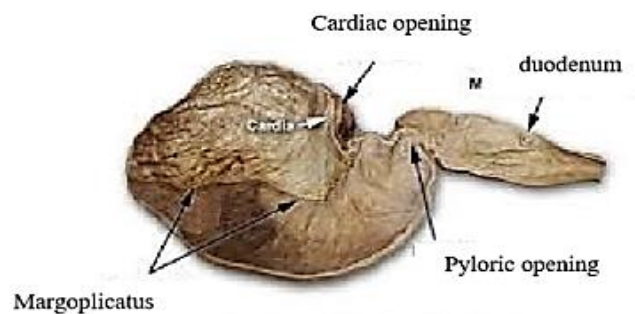
*. Fundus.

*Body.

*pylorus

*pyloric antrum

*Transitional fold ----- Dogs.



((Stomach of equine))

*Margoplicatus.----- horses.

***Ligaments of the stomach:**

1. Gastrophrenic ligment. (connect the greater curvature from the cardia to the extremity with diaphragm)
2. Greater omentum. (connects the ventral part of the greater curvature)
- 3.Gasteosplenic ligment. (connect to the hilus of the spleen).
4. Gastrocolonic ligment. (connect to the colon)
- 5.Lesser omentum. (connects the lesser curvature).
- 6.Gastropancreatic fold. (connects to the pancrease)

