



## Original Article

# Genetic Detection of Some Bacterial Species Associated with Bovine Keratoconjunctivitis Infections in Basra Governorate

Nawres N. Jaber<sup>1,\*</sup> , Moaed H. Sayhood<sup>2</sup>, Nada Salih Hadi<sup>1</sup>, Basil A. Abbas<sup>1</sup>, Noor Amjad Kazem<sup>1</sup> 

<sup>1</sup>Department of Microbiology, College of Veterinary Medicine, University of Basra, Iraq

<sup>2</sup>Department of Public Health, College of Veterinary Medicine, University of Basra, Iraq

## ARTICLE INFO

### Article history

Received: 2021-08-30

Received in revised: 2021-09-10

Accepted: 2021-10-20

Manuscript ID: [JMCS-2108-1253](#)

Checked for Plagiarism: **Yes**

Language Editor:

[Dr. Behrouz Jamalvandi](#)

Editor who approved publication:

[Dr. Zeinab Arzehgar](#)

DOI: [10.26655/JMCHMSCI.2022.1.3](#)

## KEYWORDS

Pharmaceuticals

Basra

Bovine

Infection

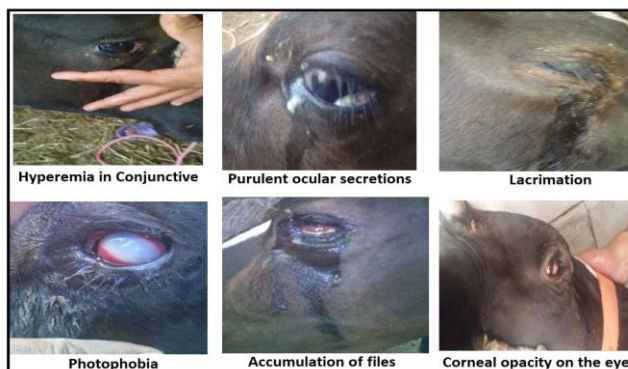
Keratoconjunctivitis

## ABSTRACT

Veterinary chemicals are pharmaceuticals or treatments that are used in cattle to treat or prevent disease, injury, and pests. Livestock survival and productivity would be severely reduced without veterinary drugs, especially for intensively maintained animals like pigs and poultry. Infectious bovine keratoconjunctivitis is a bacterial eye illness of cattle, and there is limited knowledge on the study of bacterium pathogen-contaminated eyes of animals in Basra province. As a result, the purpose of this research was to isolate and classify some bacterial species associated with infection in cattle with keratoconjunctivitis. This study included examination of 120 eye swabs from cows from different regions in the Basra governorate. The current study was carried out from October 2018 to February 2019. Out of 120 cases involved in this study, 30 cases were identified to have keratoconjunctivitis. The results of the study showed that eye infections in cows were mostly unilateral, in one eye (69%), and less than bilateral infections in both eyes (30.9%). Twenty different bacterial isolates were obtained, and the isolated bacteria were identified genetically by 16S rDNA and sequencing as *Escherichia coli* 40%, *Bacillus subtilis* 10%, *Enterobacter cancer* genus 10%, *Enterobacter hormaechei* 10%, *Enterobacter cloacae* 15%, and *Klebsiella pneumonia* 15%.

## GRAPHICAL ABSTRACT

Genetic Detection of Some Bacterial Species Associated with Bovine keratoconjunctivitis Infections in Basra Governorate



\* Corresponding author: Nawres N. Jaber

✉ E-mail: [naw\\_m@yahoo.com](mailto:naw_m@yahoo.com)

© 2022 by SPC (Sami Publishing Company)

## Introduction

Veterinary chemicals are substances that are used to prevent, diagnose, treat, change, or relieve disease or injury in animals. Prescription drugs such as antibiotics and over-the-counter products are examples of veterinary chemicals, e.g., drenches and vaccines [1-5]. The following are some of the most commonly utilized veterinary chemicals on livestock: a) Worm drenches for the intestines; b) treatments for lice, blowflies, and ticks; c) vaccines against illnesses including pulpy kidney, tetanus, and scabby mouth; d) antibiotics as drugs that are used to treat bacterial infections; and e) anti-inflammatory drugs used to treat pain [6, 7].

Pinkeye, also known as infectious bovine keratoconjunctivitis (IBK), is a highly contagious and infectious ocular illness of cattle characterized by conjunctivitis and ulcerative keratitis that affects cattle all over the world [8-11]. The sickness is also found in other livestock [12] and wildlife [13], and it is thought to be a multifactorial disease. The ocular disease maybe is not a fatal disease, but the morbidity is relatively high and combines with conjunctivitis, keratitis, congestion cornea, and sometimes abscesses [14]. Many studies from different countries have demonstrated that keratoconjunctivitis in large and small ruminants result from various bacteria or viruses like *Rickettsia*, *Chlamydia*, Viruses, *Mycoplasma spp.*, *Neisseria catarrhalis*, and *Moraxella bovis* [15].

The ocular infection may be causing temporary blindness/or permanent blindness, and the consequences could be extremally worse by turning down grazing behavior, which affects animal welfare and productivity [16]. So, ocular infections in livestock have obviously an important role in economic deflection [17]. However, multiple potential factors are associated with inflammation of the eye, including direct contact with lacrimal and nasal secretions contaminated with bacteria that have a significant role in spreading infections and producing corneal and conjunctival irritation. In moderate and acute infections and severe and persistent infections, ocular infections can affect one eye [unilateral] or both eyes [bilateral].

Conjunctivitis, excessive tears, photosensitivity, ocular pain, squinting of the eyelid, corneal edema, and corneal ulceration are all symptoms of ocular infection, as are corneal rupture and blindness [18, 19].

An outbreak probably occurs, especially when there is an implication of bad housing/animal management such as animal overcrowding and ignorance in maintaining of sanitation environment. Additionally, many seasonal insects such as domestic flies, insects, and stable flies have mechanical and dynamic important roles in conveying pathogenic bacteria [20, 21]. Little information is available regarding the study of bacteria pathogen-infected eyes of the livestock in Basra province. Therefore, the object of this study was to isolate and identify the occurrence of bacterial infection from cattle clinically associated with keratoconjunctivitis.

## Material and methods

### *Sampling of animals*

The current study was carried out from October 2019 to February 2020. Four regions (Al-Qurna, Al-Dayer, Al-Shenana, and Al-Nashwa) in Basrash province, selected purposively for this study. Clinical examination, including history and visual and physical examinations, has been previously done [22, 23]. According to the owner, the main complaint was eye problems in adult and young animals observed some weeks ago. A total of one hundred and twenty conjunctival swabs specimen were obtained from the cattle that showed an ocular infection symptom of infection. The age, breed, and sex were recorded from all examined animals. Swab sticks wet with sterile normal saline were used to collect the samples. The eyelid membrane was opened widely, allowing a spinning swab stick to be used on the corneal surface and conjunctiva, after which it was transferred to sterile test tubes containing 5 ml of sterile nutrition broth. Following that, all samples sent to the bacteriological laboratory were owned by Veterinary Medicine.

### *Bacterial identification*

For 24 hours, the tubes were incubated aerobically in the incubator at 37°C. After that, it was cultivated on blood agar containing 7%

sheep blood, MacConkey agar, Eosin Methylene blue, and incubated aerobically for 24 hours at 37°C. Pure colonies were saved on brain heart infusion agar for the purpose of conducting genetic identification of bacterial strains, and colonies were further sub-cultured to investigate the morphology of forming colonies and germ interactions that were taken from it to Gram stain.

*Extraction of genomic DNA*

The isolates' DNA was isolated using a genomic DNA purification kit. Electrophoresis on 0.8 percent Agarose revealed the result, which was visible under UV light as bands of DNA [24].

*Identification by Polymerase Chain Reaction (PCR)*

Primers for 16SrDNA F- 5' AGAGTTTGATCCTGGCTCAG-3' and R- 5' GGTACCTTGTTCAGACTT-3" were used [25], as well as a PCR software developed earlier [26] from [27]. With minor tweaks, the amplification stages were abstracted from [28].

*Sequencing for 16S rDNA and identification of bacterial species*

The national instrumentation center for environmental management (nicem) sequenced the gene ([http://nicem.snu.ac.kr/main/?en\\_skin=index.html](http://nicem.snu.ac.kr/main/?en_skin=index.html)). For complete identification of bacterial isolates, a homology search was conducted using the Basic Local Alignment Search Tool (BLAST) program, available at the National Center Biotechnology Information (NCBI) online at (<http://www.ncbi.nlm.nih.gov>), and the Bio Edit program, available at the National Center Biotechnology Information (NCBI) online at (<http://www.ncbi.nlm.nih.gov>).

**Result and Discussion**

Out of 120 samples involved in this study, 30 were identified as having keratoconjunctivitis with an estimated prevalence of (25%). The results of the study showed that eye infections in cows were mostly unilateral, in one eye (69%), and less than bilateral infections in both eyes (30.9%), as showed in Table 1. The highest ocular infection in the examined animals was found during the winter (from January to February) comparing with other times (Table 2).

**Table 1:** Categorized cattle based on ocular infection condition (n=120)

Ocular clinical signs	Number of infected animals	Percentage %
Unilateral infections	83	69.1 %
Bilateral infections	37	30.9 %
Total	120	100%

**Table 2:** Distribution of sampling by months

Months	Positive samples	Percentage %
October	14	11.60%
November	13	10.80%
December	27	22.50%
January	30	25%
February	36	30%

Infected animals showed conjunctival hyperemia (15.8%), (Figure 1), serious, mucoid and/or purulent ocular secretions (20.8%) (Figure 2) photophobia (24.1%) (Figure 3), lacrimation

(15%) (Figure 4), congregation of flies on the eyes (12.5%) (Figure 5), and corneal opacity (11.6%) (Figure 6), Table 3.

**Table 3:** Clinical signs of infected cows with keratoconjunctivitis

Clinical signs	Number of animals	Percentage%
conjunctival hyperemia	19	15.8%
purulent ocular secretions	25	20.8%
Photophobia	29	24.1%
Lacrimation	18	15%
congregation of flies on the eyes	15	12.5%
corneal opacity	14	11.6%



**Figure 1:** Hyperemia in Conjunctiva



**Figure 4:** Lacrimation



**Figure 2:** Purulent ocular secretions



**Figure 5:** Accumulation of flies



**Figure 3:** Photophobia

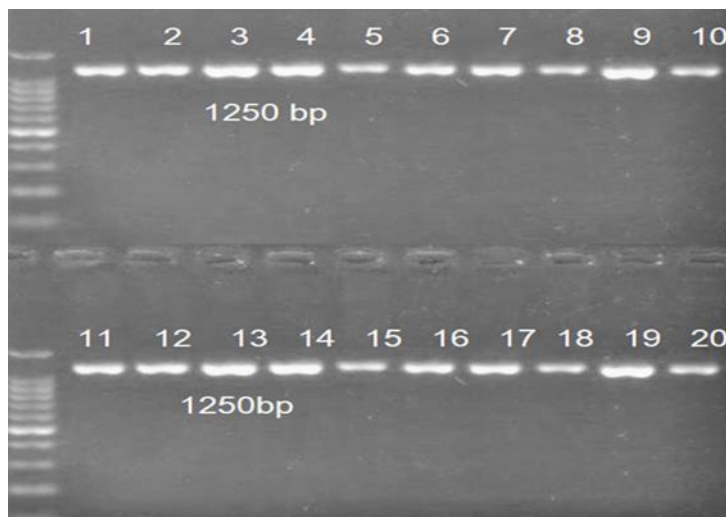


**Figure 6:** Corneal opacity on the eyes



A genomic DNA purification kit was used to recover DNA from twenty different strains. The result revealed under UV light after electrophoresis on 0.8 percent Agarose, and the isolated DNA from each isolate was submitted to

PCR for amplifying 16S rDNA (figure 7). By comparing the gene's unique band to the typical molecular DNA ladder, 1250 bp was determined (100bp).



**Figure 7:** Amplification of 16S rDNA

*Sequencing for 16S rDNA and identification of bacterial species*

Table 4 shows the results of 16S rDNA nucleotide sequencing for 20 isolates. Isolates were identified to the strain level. Table 5 shows the

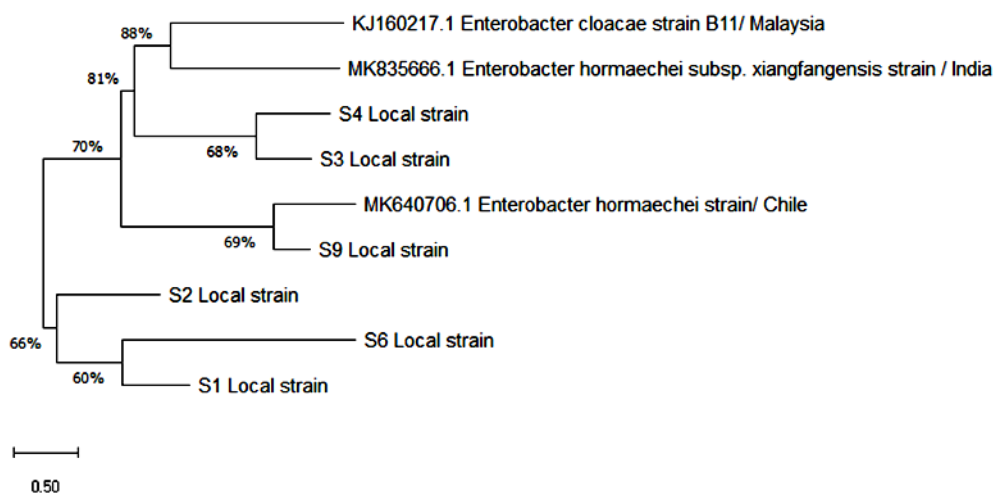
number and proportion of bacteria recovered from inflammatory smears, while Figures 8 and 9 illustrate the phylogenetic tree of some of the isolates.

**Table 4:** Identified bacterial strains by gene sequencing

Bacterial species	Identical to strain	Percentage of identity (%)	Length (bp)
<i>Escherichia coli</i>	E21	99%	1192
<i>Escherichia coli</i>	wid15	99%	723
<i>Escherichia coli</i>	CMC357	98%	476
<i>Escherichia coli</i>	UCCB108	99%	1383
<i>Bacillus subtilis</i>	subsp. inaquosorum	99%	1149
<i>Enterobacter cancerogenus</i>	pca7	99%	1171
<i>Enterobacter hormaechei</i>	subsp. xiangfangensBUFF38	99%	1493
<i>Enterobacter cloacae</i>	109	99%	514
<i>Klebsiella pneumoniae</i>	DSM 30104	100%	1130
<i>Enterobacter hormaechei</i>	FG MZN 14 TR	100%	1146
<i>Pseudomonas aeruginosa</i>	ST11	100%	1410

**Table 5:** The percentage of bacterial species from twenty isolates

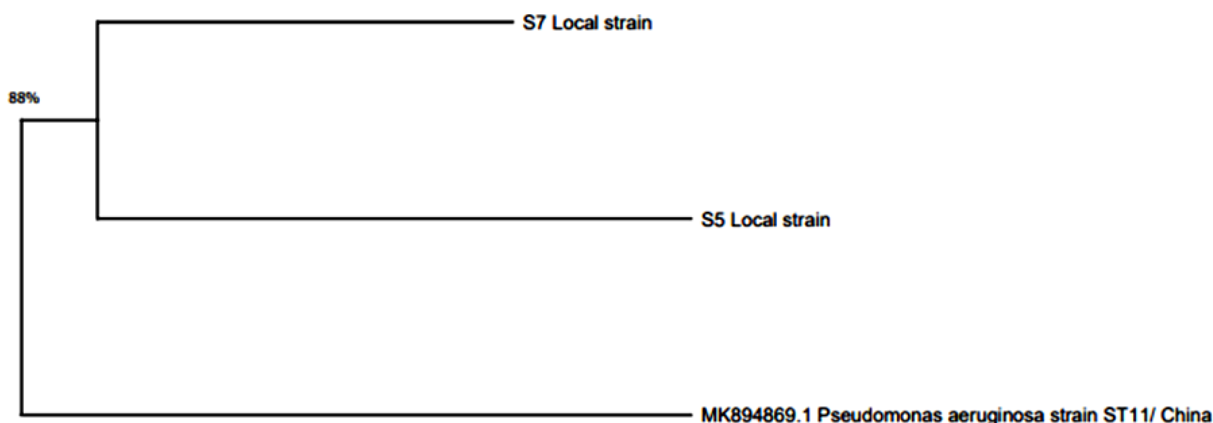
Bacterial species	The percentage from 20 isolates
<i>Escherichia coli</i>	20%
<i>Bacillus subtilis</i>	10%
<i>Enterobacter cancerogenus</i>	10%
<i>Enterobacter hormaechei</i>	10%
<i>Enterobacter cloacae</i>	15%
<i>Klebsiella pneumoniae</i>	15%
<i>Pseudomonas aeruginosa</i>	20%



**Figure 8:** Phylogenetic tree of *Enterobacter*

Phylogenetic tree analysis of *Enterobacter* showed five distinct groups of local strains. S1, S2, S3 & S4, S6, and S9. S3 & S4 have a similarity with those previously isolated from Malaysia and

India. S9 has a similarity with a strain isolated from Chile. The other three strains are far away from previously compared strains.



**Figure 9:** phylogenetic tree of *Pseudomonas aeruginosa*

Phylogenetic tree analysis of *Pseudomonas aeruginosa* showed two related strains S5 and S7. Those strains have a high similarity with *Pseudomonas aeruginosa* isolated in China.

Infectious bovine keratoconjunctivitis (IBK) is an infectious ocular illness that affects cattle, particularly those of the dairy breeds. Gram-negative bacteria, primarily *Moraxella Bovis*, cause the disease, and it is treated by parenteral or systemic antibiotic therapy. In most cases, *M. Bovis* infections are treated topically with antibiotic-containing formulations, especially when clinical symptoms are present. The antibiotic benzathine cloxacillin is known to be effective in the treatment of *M. Bovis* infections, and it has been frequently suggested for topical use. Due to an extremely painful ailment affecting

beef and dairy cattle worldwide [29, 30], infectious bovine keratoconjunctivitis generates major economic losses resulting from lower weight gain in beef breeds and loss of milk production, short-term disruption of breeding plans, and treatment expenditures [31].

IBK is a set of organisms and predisposing factors that cause ocular alterations that favor bacterial colonization of the eye, similar to many other disorders. When dealing with less aggressive gram-negative and positive bacteria strains, predisposing factors may be an essential component of the IBK ocular illness complex [32, 34]. In our study, out of 120 samples, 24 were identified to have keratoconjunctivitis with an estimated prevalence by 25%. The results of the study showed that eye infections in cows were

mostly unilateral, in one eye (69%), and less than bilateral infections in both eyes (30.9%). Infected animals showed conjunctival hyperemia (15.8%), serious, mucoid and/or purulent ocular secretions (20.8%), photophobia (24.1%), lacrimation (15%), the congregation of flies on the eyes (12.5%), and corneal opacity (11.6%). Because the 16S rDNA exists in this region in all bacteria, an amplified region of around 1250bp was found using the PCR technique, which agreed with the finding of previous studies [26, 35]. The isolates identified to the level of strain with the percentage of bacteria isolated from inflammatory smears were *Escherichia coli* by 20%, *Bacillus subtilis* by 10%, *Enterobacter cancerogenus* by 10%, *Enterobacter hormaechei* by 10%, *Enterobacter cloacae* by 15%, *Klebsiella pneumonia* by 15% and *Pseudomonas aeruginosa* by 20%, which corresponded to past research [36–39].

### Conclusion

Phylogenetic tree analysis of *Enterobacter* showed five distinct groups of local strains. Some have a similarity with those previously isolated from Malaysia and India. Other has a similarity with a strain isolated from Chile. Furthermore, three strains are far away from previously compared strains. On the other hand, Phylogenetic tree analysis of *Pseudomonas aeruginosa* showed a high similarity with *Pseudomonas aeruginosa* isolated in China.

### Funding

This research did not receive any specific grant from funding agencies in the public, commercial, or not-for-profit sectors.

### Authors' contributions

All authors contributed toward data analysis, drafting and revising the paper and agreed to be responsible for all the aspects of this work.

### Conflict of Interest

The authors declare no conflicts of interest.

### ORCID

Nawres N. Jaber

[0000-0002-9181-0943](https://doi.org/10.24230/0000-0002-9181-0943)

Noor Amjad Kazem

[0000-0003-1030-7041](https://doi.org/10.24230/0000-0003-1030-7041)

### References

- [1]. You S.H., Yoon M.Y., Moon J.S., *J. Nat. Sci. Bio. Med.*, 2021, **12**:3 [[Google Scholar](#)], [[Publisher](#)]
- [2]. Kumar V., Bhatia M., Kumar A., *J. Nat. Sci. Bio. Med.*, 2020, **11**:83 [[Crossref](#)], [[Google Scholar](#)], [[Publisher](#)]
- [3]. Leman M. A., Claramita M., Rahayu G.R., *Am. J. Health Behav.*, 2021, **45**:278 [[Crossref](#)], [[Google Scholar](#)], [[Publisher](#)]
- [4]. Ruszymah B.H.I., Nabishah B.M., Aminuddin S., Khalid B.A.K., *Clin. Exp. Pharmacol.*, 1995, **22**:40 [[Crossref](#)], [[Google Scholar](#)], [[Publisher](#)]
- [5]. Das S., Kumar S., Dutta M., Isa M.Z.A. *Int. J. Med. Toxicol. Leg. Med.*, 2019, **22**:186 [[Google Scholar](#)], [[Publisher](#)]
- [6]. Halim S., Huda H., Luqman M., Yan C.W., Fatin S., *Int. J. Med. Toxicol. Leg. Med.*, 2020, **23**:120 [[Google Scholar](#)], [[Publisher](#)]
- [7]. Othman Z., Khalep H.R.H., Abidin A.Z., Hassan, H., Fattepur S. *Pharmacogn. J.*, 2019, **11**:1 [[Google Scholar](#)]
- [8]. Temilade O. P., Olubukola O. J., Akinkunmi W.A., Rukayat H.O., *Int. J. Biotechnol.*, 2020, **9**:23 [[Crossref](#)], [[Google Scholar](#)]
- [9]. Qahir A., Khan N., Hakeem A., Kamal R., *Baghdad J. Biochem. Appl. Biol.*, 2021, **2**:28 [[Crossref](#)]
- [10]. Oyetunji O.A., Samson A.O., Adekemi A.T., Feyisike J.O., *J. Infertil. Reprod. Biol.*, 2021, **9**:52 [[Publisher](#)], [[Google Scholar](#)]
- [11]. Kibar M., Gümüşsoy K.S., Öztürk A., *Turk. J. Vet. Anim. Sci.*, 2007, **30**:553 [[Google Scholar](#)], [[Publisher](#)]
- [12]. Dedousi A., Karatzia M.A., Katsoulos P.D., *Acta Vet. Hung.*, 2019, **67**:553 [[Crossref](#)], [[Google Scholar](#)], [[Publisher](#)]
- [13]. Belloy L., Giacometti M., Abdo E.M., Nicolet J., Krawinkler M., Janovsky M., Bruderer U., Frey J., *Vet. Res.*, 2001, **32**:155 [[Crossref](#)], [[Google Scholar](#)], [[Publisher](#)]
- [14]. Whittier W.D., Currin J.F., Currin N., *Virg. Tech. Works*, 2005 [[Google Scholar](#)], [[Publisher](#)]
- [15]. Ghahari S., Mohammadi-Hasel K., Malakouti S.K., Roshanpajouh M., *East Asian Arch.*

- Psychiatry, 2020, **30**:52 [[Crossref](#)], [[Google Scholar](#)], [[Publisher](#)]
- [16]. Behera H.K., Sarkar D., Sardar K.K., Mohapatra P., Jena G.R., Kumar D., 2017 [[Google Scholar](#)]
- [17]. Kneipp M., Green A.C., Govendir M., Laurence M., Dhand N.K., *Prev. Vet. Med.*, 2021, **194**:105432 [[Crossref](#)], [[Google Scholar](#)], [[Publisher](#)]
- [18]. Burns M.J., O'Connor A.M., *Vaccine*, 2008, **26**:144 [[Crossref](#)], [[Google Scholar](#)], [[Publisher](#)]
- [19]. Kneipp M., Govendir M., Laurence M., Dhand N.K., *Prev. Vet. Med.*, 2021, **187**:105232 [[Crossref](#)], [[Google Scholar](#)], [[Publisher](#)]
- [20]. Karthik K., Mahaprabhu R., Roy P., Raman M., *Proc. Natl. Acad. Sci. India Sect. B Biol. Sci.*, 2018, **88**:1409 [[Crossref](#)], [[Google Scholar](#)], [[Publisher](#)]
- [21]. Saikrishna K.S., Rajesh K., Rao V.V., *Intas Polivet*, 2018, **19**:390 [[Crossref](#)], [[Google Scholar](#)], [[Publisher](#)]
- [22]. Brassel J., Rohrssen F., Failing K., Wehrend A., *Pol. J. Vet. Sci.*, 2019, **22**:761 [[Crossref](#)], [[Google Scholar](#)], [[Publisher](#)]
- [23]. Jackson P., Cockcroft P., *Clinical examination of farm animals*. John Wiley & Sons, 2008 [[Google Scholar](#)], [[Publisher](#)]
- [24]. Russell D.W., Sambrook J., *Molecular cloning: a laboratory manual*. Cold Spring Harbor Laboratory Cold Spring Harbor, NY, 2001, **1** [[Google Scholar](#)]
- [25]. Lane D.J., *Nucleic Acid Tech. Bact. Syst.*, **1991**:115 [[Google Scholar](#)]
- [26]. Alhilfi W.A.H., Al-Tameemi K.A.H., Alasadi I.T.F., Alnajafe M.T.J., *J. Pharm. Sci. Res.*, 2019, **11**:380 [[Google Scholar](#)], [[Publisher](#)]
- [27]. Miyoshi T., Iwatsuki T., Naganuma T., *Appl. Environ. Microbiol.*, 2005, **71**:1084 [[Crossref](#)], [[Google Scholar](#)], [[Publisher](#)]
- [28]. Prokić L., Pavličević M., Kljujev I., Vucelić-Radović B., Raičević V., Stikić R., *Fac. Agric. Univ. Belgrade*, 2009, **7** [[Google Scholar](#)]
- [29]. Rehman N., Ghotekar S., Izharullah M., Zaheer J., Akram M., Khan M.I., *J. Med. Chem. Sci.*, 2021, **4**:75 [[Crossref](#)], [[Google Scholar](#)], [[Publisher](#)]
- [30]. Bader N., Faraj M., Mohamed A., Alshelmani N., Elkailany R., Bobtana F., *J. Med. Chem. Sci.*, 2020, **3**:138 [[Crossref](#)], [[Google Scholar](#)], [[Publisher](#)]
- [31]. Takele G., Zerihun A., *J. Vet. Med. A Physiol. Pathol. Clin. Med.*, 2000, **47**:169 [[Crossref](#)], [[Google Scholar](#)], [[Publisher](#)]
- [32]. Scharko P., in Ky. Rumin. Nutr. Workshop, 2004 [[Crossref](#)]
- [33]. Soleiman-Beigi M., Arzehgar Z., *Sci. J. Ilam Uni. Med. Sci.*, 2013, **21**:13 [[Google Scholar](#)], [[Publisher](#)]
- [34]. Vandergaast N., Rosenbusch R.F., *Am. J. Vet. Res.*, 1989, **50**:1437 [[Google Scholar](#)], [[Publisher](#)]
- [35]. Alhilfi W.A.H., Al-Tameemi K.A.H., Alnajafe M.T.J., *Int. J. Innov. Res. Sci. Eng. Technol.*, 2016, **5**:8678 [[PDF](#)], [[Google Scholar](#)]
- [36]. Shabgah A.G., Qasim M.T., Mostafavi S.M., Zekiy A.O., Ezzatifar F., Ahmadi M., Haftcheshmeh S.M., Navashenaq J.G., *Expert Rev. Mol. Med.*, 2021, **23**:e4 [[Crossref](#)], [[Google Scholar](#)], [[Publisher](#)]
- [37]. Tahmasebi S., Qasim M.T., Krivenkova M.V., Zekiy A.O., Thangavelu L., Aravindhan S., Izadi M., Jadidi-Niaragh F., Ghaebi M., Aslani S., *Cell Biol. Int.*, 2021, **45**:1498 [[Crossref](#)], [[Google Scholar](#)], [[Publisher](#)]
- [38]. Romano J.S., Mørk T., Laaksonen S., AAgren E., Nymo I.H., Sunde M., Tryland M., *BMC Vet. Res.*, 2018, **14**:1 [[Crossref](#)], [[Google Scholar](#)], [[Publisher](#)]
- [39]. AAKERstedt J., Hofshagen M., *Acta Vet. Scand.*, 2004, **45**:1 [[Crossref](#)], [[Google Scholar](#)], [[Publisher](#)]

#### HOW TO CITE THIS ARTICLE

Nawres N. Jaber, Moaed H. Sayhood, Nada Salih Hadi, Basil A. Abbas, Noor Amjad Kazem. Genetic Detection of Some Bacterial Species Associated with Bovine Keratoconjunctivitis Infections in Basra Governorate, *J. Med. Chem. Sci.*, 2022, 5(1) 19-26

DOI: 10.26655/JMCHMSCI.2022.1.3

URL: [http://www.jmchemsci.com/article\\_139185.html](http://www.jmchemsci.com/article_139185.html)