



## Anatomical Landmarks

**1. Cusp:** is an elevation or mound on the crown portion of a tooth making up a divisional part of the occlusal surface.

**2. Tubercle:** is a smaller elevation on some portion of the crown produced by an extra formation of enamel.

**3. Cingulum:** is the lingual lobe of an anterior tooth. It makes up the bulk of the cervical third of the lingual surface. Its convexity mesiodistally resembles a girdle encircling the lingual surface at the cervical third

**4. Ridge:** is any linear elevation on the surface of a tooth and is named according to its location (e.g., labial ridge, incisal ridge, marginal ridge).

**5. Marginal ridges:** are those rounded borders of the enamel that form the mesial and distal margins of the occlusal surfaces of premolars and molars and the mesial and distal margins of the lingual surfaces of the incisors and canines.

**6. Triangular ridges:** descend from the tips of the cusps of molars and premolars toward the central part of the occlusal surfaces. They are so named because the slopes of each side of the ridge are inclined to resemble two sides of a triangle. They are named after the cusps to which they belong (e.g., the triangular ridge of the buccal cusp of the maxillary first premolar).

**7. Transverse ridge:** is the union of two triangular ridges crossing transversely the surface of a posterior tooth.



### Lecture 3

د.زهراء مازن الهواز

**8. Oblique ridge:** is a ridge crossing obliquely the occlusal surfaces of maxillary molars and formed by the union of the triangular ridge of the distobuccal cusp and the distal cusp ridge of the mesiolingual cusp.

**9. Fossa:** is an irregular depression or concavity.

**10. Lingual fossae:** are on the lingual surface of incisors

**11. Central fossae:** are on the occlusal surface of molars.

**12. Triangular fossae:** are found on molars and premolars on the occlusal surfaces mesial or distal to marginal ridges

**13. Sulcus:** is a long depression or valley in the surface of a tooth between ridges and cusps, the inclines of which meet at an angle. A sulcus has a developmental groove at the junction of its inclines. (The term *sulcus* should not be confused with the term *groove*).

**14. Developmental groove:** is a shallow groove or line between the primary parts of the crown or root.

**15. Supplemental groove:** less distinct, is also a shallow linear depression on the surface of a tooth, but it is supplemental to a developmental groove and does not mark the junction of primary parts.

**16. Pits:** are small pinpoint depressions located at the junction of developmental grooves or at terminals of those grooves.

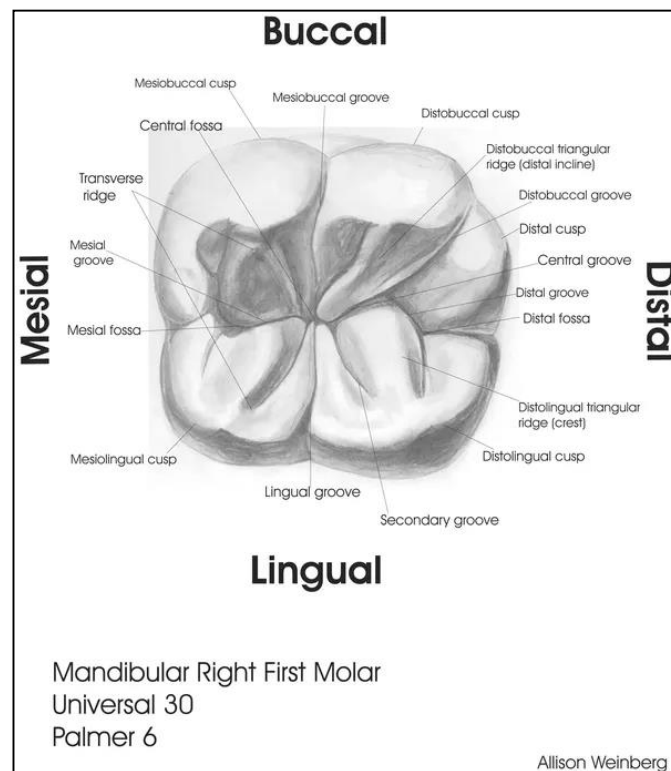
### Lecture 3

### د.زهراء مازن الهواز

**17. Central pit:** is a term used to describe a landmark in the central fossa of molars where developmental grooves join.

**18. Lobe:** is one of the primary sections of formation in the development of the crown. Cusps and mamelons are representative of lobes.

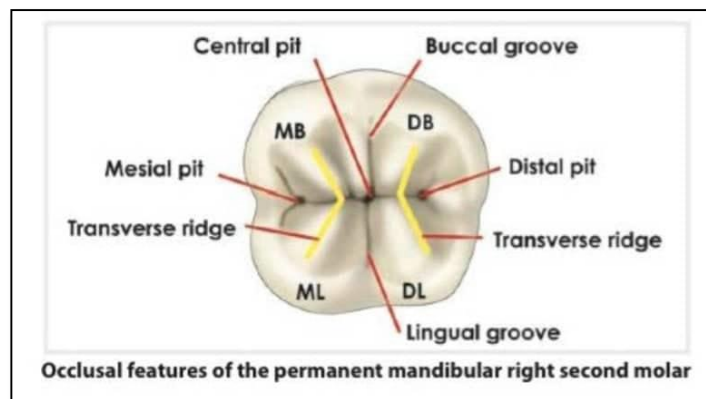
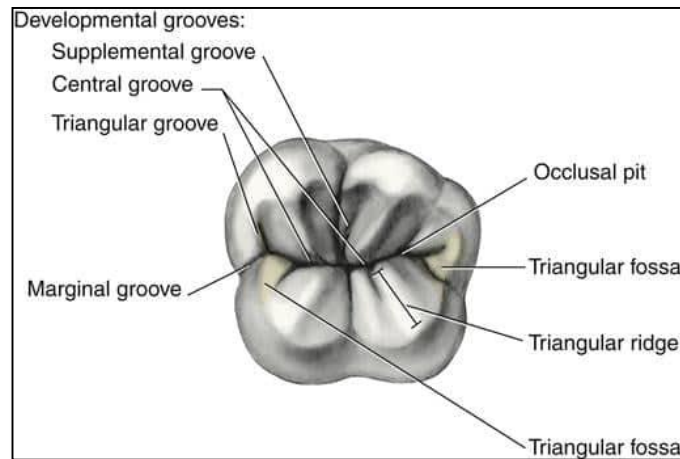
**19. Mamelon:** is any one of the three rounded protuberances found on the incisal ridges of newly erupted incisor teeth.





Lecture 3

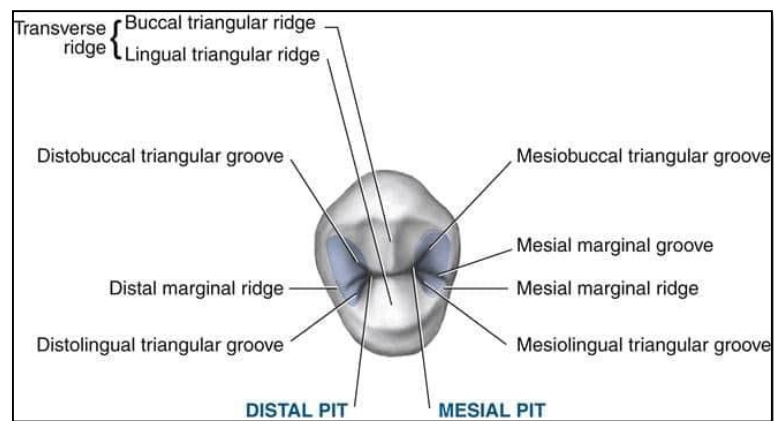
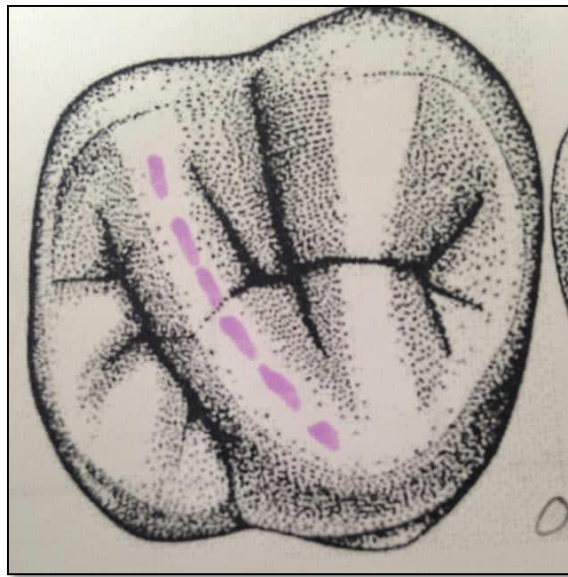
د.زهراء مازن الهواز





Lecture 3

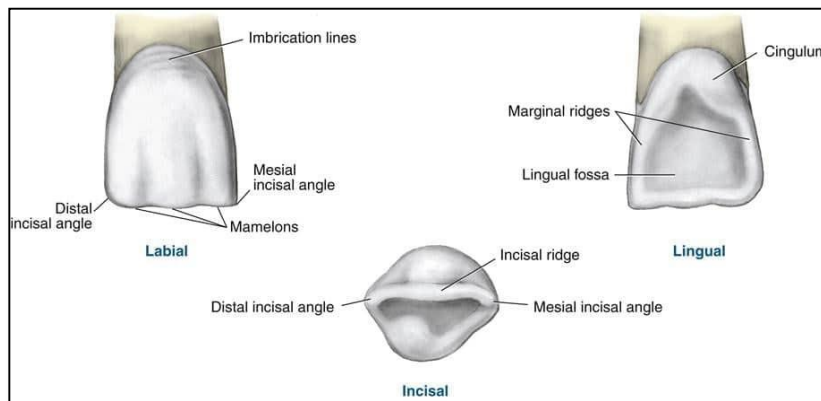
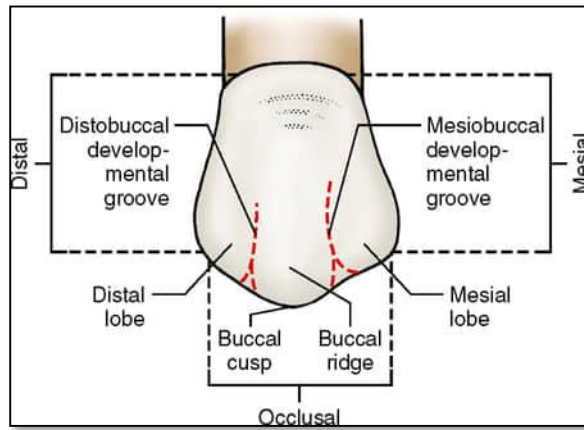
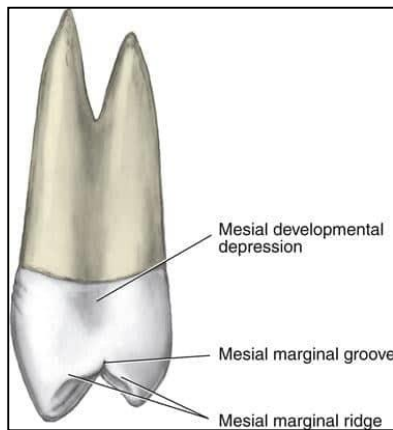
د.زهراء مازن الهواز





Lecture 3

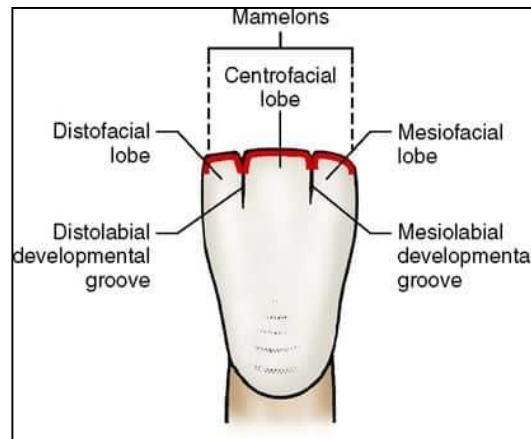
د.زهراء مازن الهواز





Lecture 3

د.زهراء مازن الهواز



University of Basrah

College of Dentistry

Department of conservative  
Dentistry



جامعة البصرة

كلية طب الاسنان

فرع معالجة الاسنان

Lecture 3

د.زهراء مازن الهواز